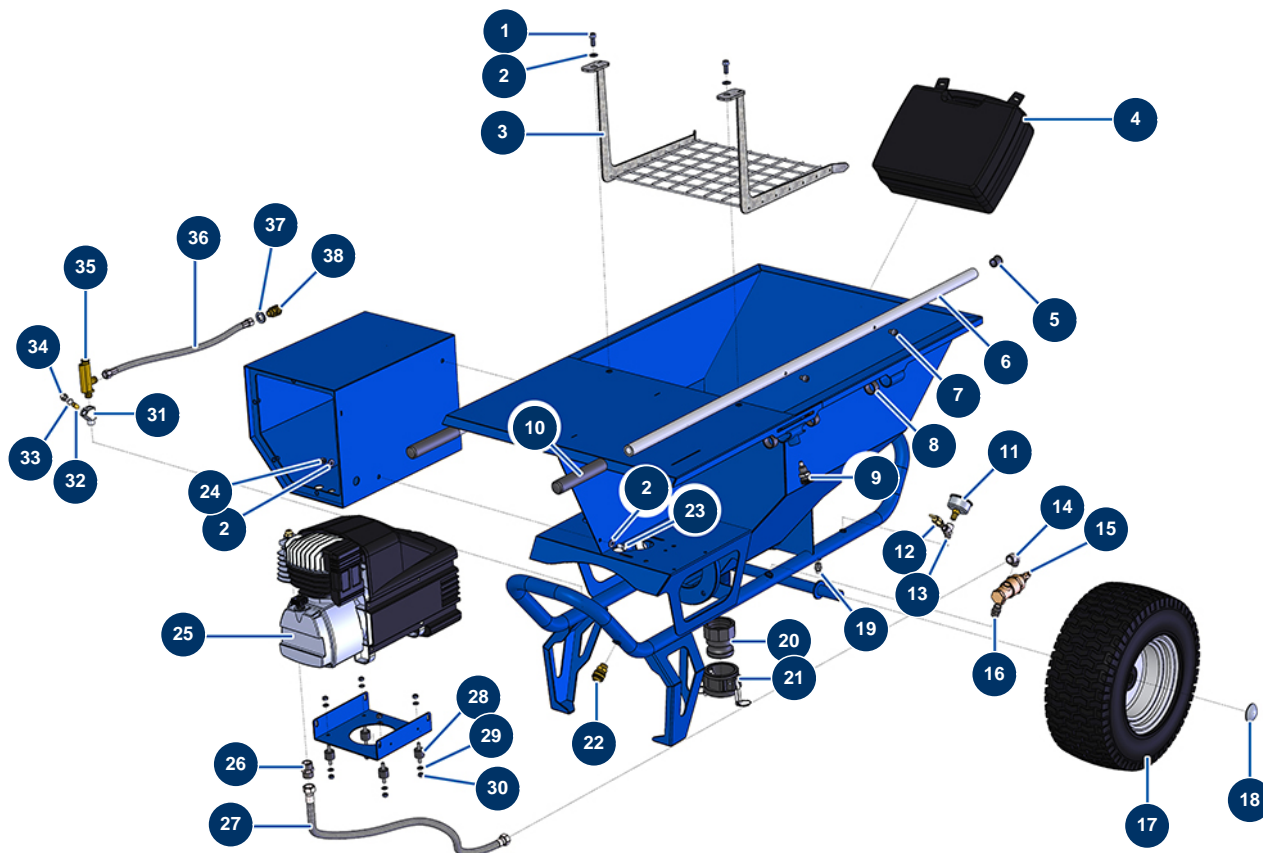


COMPACT-PRO 30 spraying machine - Chassis

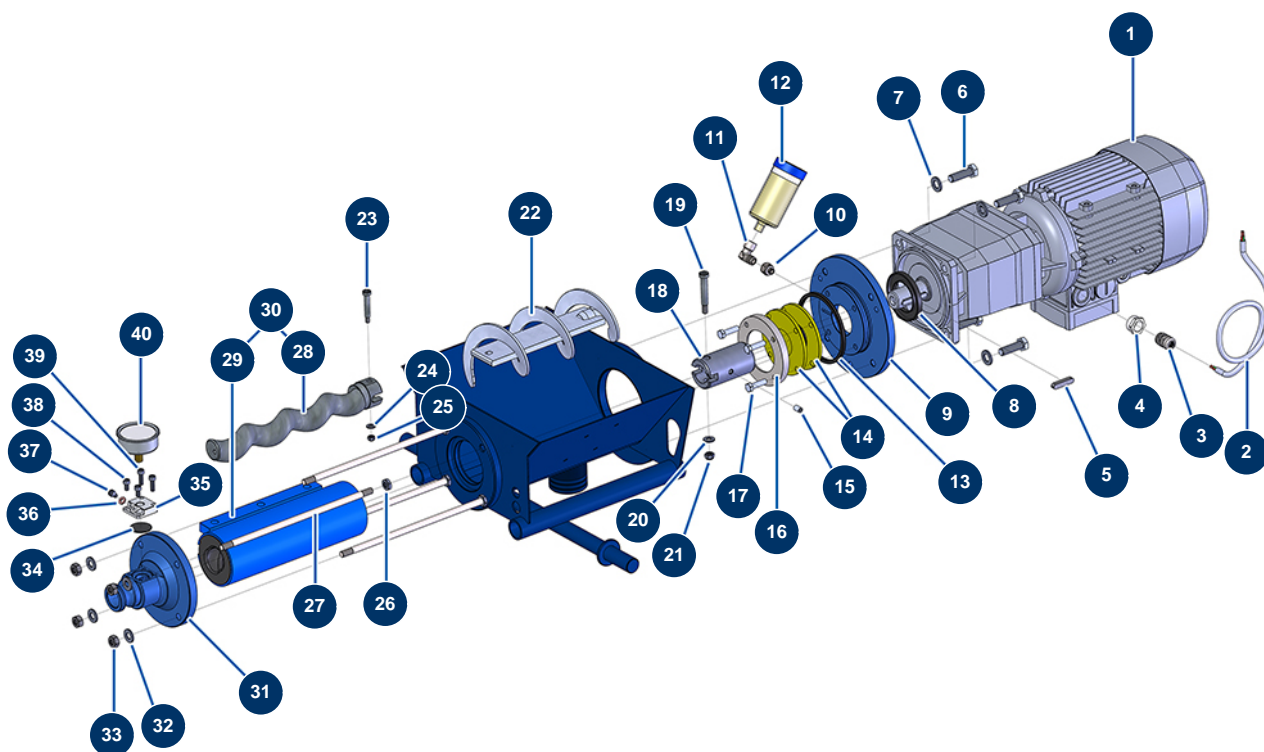


Détails des pièces

| Pos. | Référence | Désignation |
|------|-----------|---|
| 1 | 80470 | 8 x 20 cylindrical head screw |
| 2 | 80260 | ø 8 inox medium washer |
| 3 | 11379 | COMPACT-PRO 30, 35, 40 & 50 machine safety grid |
| 4 | 11833 | Complete ABS mortar lance - 1" coupling |
| 5 | 90870 | Black plastic end cap for ø 25 round tube |
| 6 | C21327 | COMPACT-PRO 30 to 55 machine arm from March 2020 |
| 7 | 90151 | 8 x 10 cylindrical head screw |
| 8 | 13453 | Cylindrical bearing 26/30 x 16 |
| 9 | 15010 | Complete indexing pin for arm |
| 10 | 90255 | Arm handle for EUROPRO 24P, E50 and E100 |
| 11 | 80028 | 1/4 conical axial manometer - 50mm - 0 to 20 bar |
| 12 | 80097 | 1/4" certified outer threaded safety valve 11 bar |
| 13 | 30123 | Low pressure Y - M1/4" x F1/4" x F1/4" |

| Pos. | Référence | Désignation |
|------|-----------|--|
| 14 | 30120 | Elbow BP 90° 3/8 MaleC x 3/8 FemaleD |
| 15 | 101015 | 3/8" emptying autonomous valve |
| 16 | 30367 | 3/8" MaleC x 3/8" MaleC low-pressure nipple |
| 17 | 80372 | Complete Ø410 wheel with bearing - axle of 25 |
| 18 | 90282 | Ø25 chromed clip |
| 19 | 30133 | 1/4" male compressor tank purge |
| 20 | 11396 | POLYPRO 2" inner threaded adapter for COMPACT-PRO 30 |
| 21 | 11397 | POLYPRO 2" female plug with cams for COMPACT-PRO 30 |
| 22 | 70034 | 3/8" outer threaded female quick connector |
| 23 | 30295 | THEF 8 x 16 screw |
| 24 | 13980 | M 8 nylstop inox nut |
| 25 | 80454 | EUROPRO 27 compression head |
| 26 | 30369 | 1/2" MaleC x 1/2" MaleC low-pressure nipple |
| 27 | 11341 | COMPACT-PRO 30 & 40 compressor outlet air hose |
| 28 | 30147 | Silentbloc ø 20 x 15 M6 for Compact-pro 30 |
| 29 | 70087 | ø 6 inox narrow washer |
| 30 | 14217 | M 6 nylstop inox nut |
| 31 | M10322 | Filter body for spraying machine |
| 32 | 12502 | 50 meshes hopper filter |
| 33 | 1032095 | O-ring 12,42 x 1,78 |
| 34 | M10323 | Spraying machine filter body plug |
| 35 | 30005 | Flowmeter for EUROPRO 4-6-8-14 and 24 P |
| 36 | 11340 | MORTAR machine flow meter air hose |
| 37 | 30288 | ø 16 inox narrow washer |
| 38 | 70035 | 3/8" inner threaded female quick fit coupling |

COMPACT-PRO 30 spraying machine - Transmission

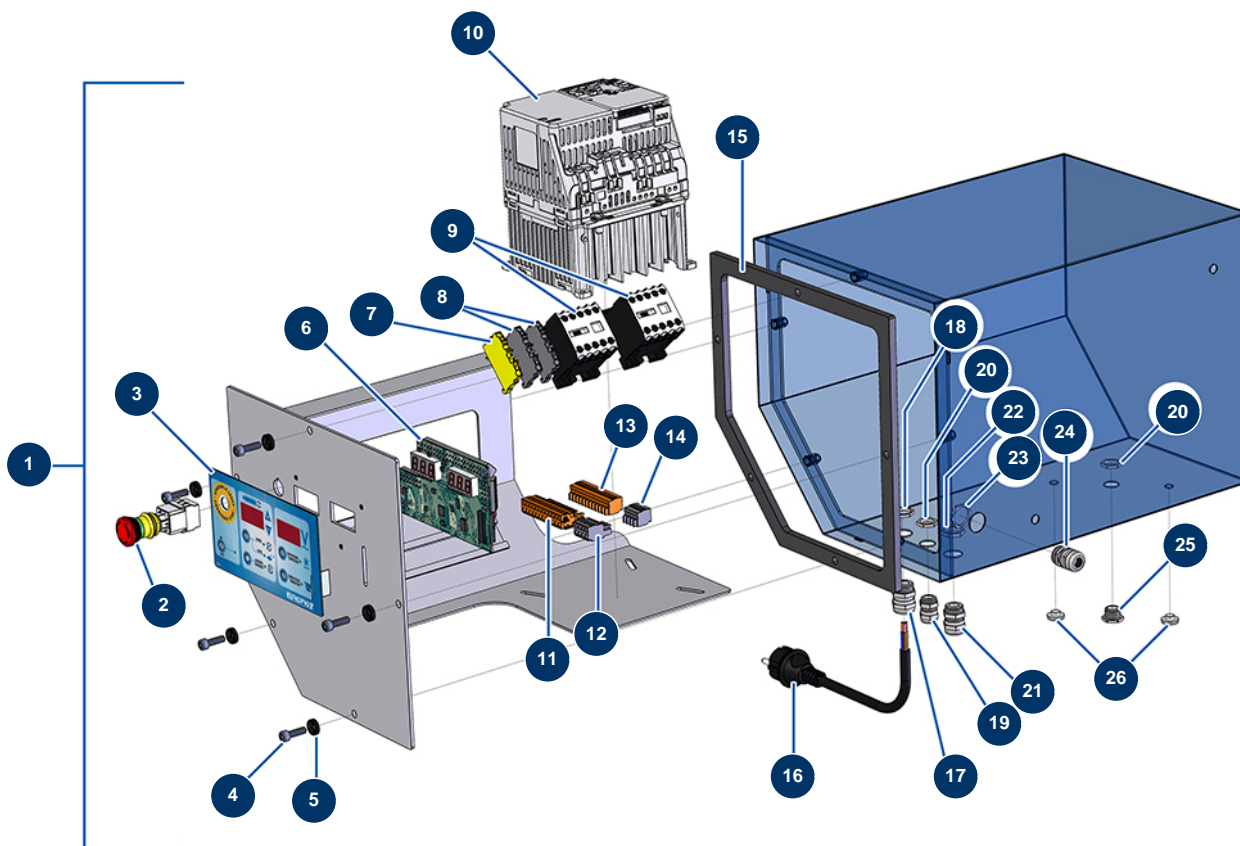


Détails des pièces

| Pos. | Référence | Désignation |
|------|-----------|---|
| 1 | 10895 | Geared motor 2,2 kW - T322 - R14 - 1400 rpm - 400V |
| 2 | 90606 | Shielded cable 4 x 1,5 by the metre |
| 3 | 30040 | Nickel plated watertight cable gland of 11 CEM |
| 4 | 80446 | Cable gland reduction M 25-11 |
| 5 | 11999 | 8 x 7 x 40 parallel key with round end |
| 6 | 12928 | THEF 12 x 40 screw |
| 7 | 30281 | ø 12 inox narrow washer |
| 8 | 70107 | Spi seal 50 x 80 x 8 for 24P,24PT, MPE300, COMPACT-PRO 30 |
| 9 | 11334 | Motor spacer flange for COMPACT-PRO |
| 10 | 10899 | 1/8" MaleD x 1/4" FemaleD low-pressure nipple |
| 11 | 30121 | 90° low-pressure elbow 1/4 MaleC x 1/4 FemaleD |
| 12 | 90639 | Automatic greaser |
| 13 | 11337 | COMPACT-PRO 30 4-lobes seal for motor spacer flange |

| Pos. | Référence | Désignation |
|------|--------------|---|
| 14 | 11300 | COMPACT-PRO 30 tank base gasket |
| 15 | 11360 | Socket head screw M 8 x 16 |
| 16 | M10190 | COMPACT-PRO 30 gasket support ring |
| 17 | 11544 | THEF 8 x 25 screw |
| 18 | 11336 | Drive shaft for CP 20, 30 & 40 |
| 19 | 11359 | CP 30 transmission shaft screw pin |
| 20 | 80260 | ø 8 inox medium washer |
| 21 | 13980 | M 8 nylstop inox nut |
| 22 | 11357 | CP 30 to 50 connecting rod |
| 23 | 90520 | CP 30 rotor screw pin |
| 24 | 80259 | Ø 6 medium washer |
| 25 | 14217 | M 6 nylstop inox nut |
| 26 | 13979 | M10 flat inox nut |
| 27 | 60010 | Fastening tie rod for MAP 5/6 |
| 28 | MI7009107300 | EUROPRO MAP 5/6 pump rotor CP30-type head |
| 29 | MI3F00529400 | EUROPRO MAP 6 D8-1,5 adjustable pump stator |
| 30 | 30446 | EUROPRO MAP 6 pump rotor/stator kit |
| 31 | 90125 | EUROPRO 24 P and COMPACT-PRO 30 stator flange |
| 32 | 80261 | ø 10 inox medium washer |
| 33 | 13978 | M10 inox nut |
| 34 | 12913 | Pump nose manometer membrane for JETPRO 80, 120, JETBAG 120 |
| 35 | M10079 | MIXPRO 14 cage cover |
| 36 | 12765 | Copper seal for JETPRO 80 pump nose |
| 37 | 90157 | M6 x 16 cylindrical head screw - CP 60 |
| 38 | 12112 | 6 x 12 cylindrical head screw |
| 39 | 90996 | 6 x 20 inox cylindrical head screw |
| 40 | 80070 | Axial manometer 1/4" conical oil 50 mm 0 to 60 bar |

COMPACT-PRO 30 spraying machine - Electrical box

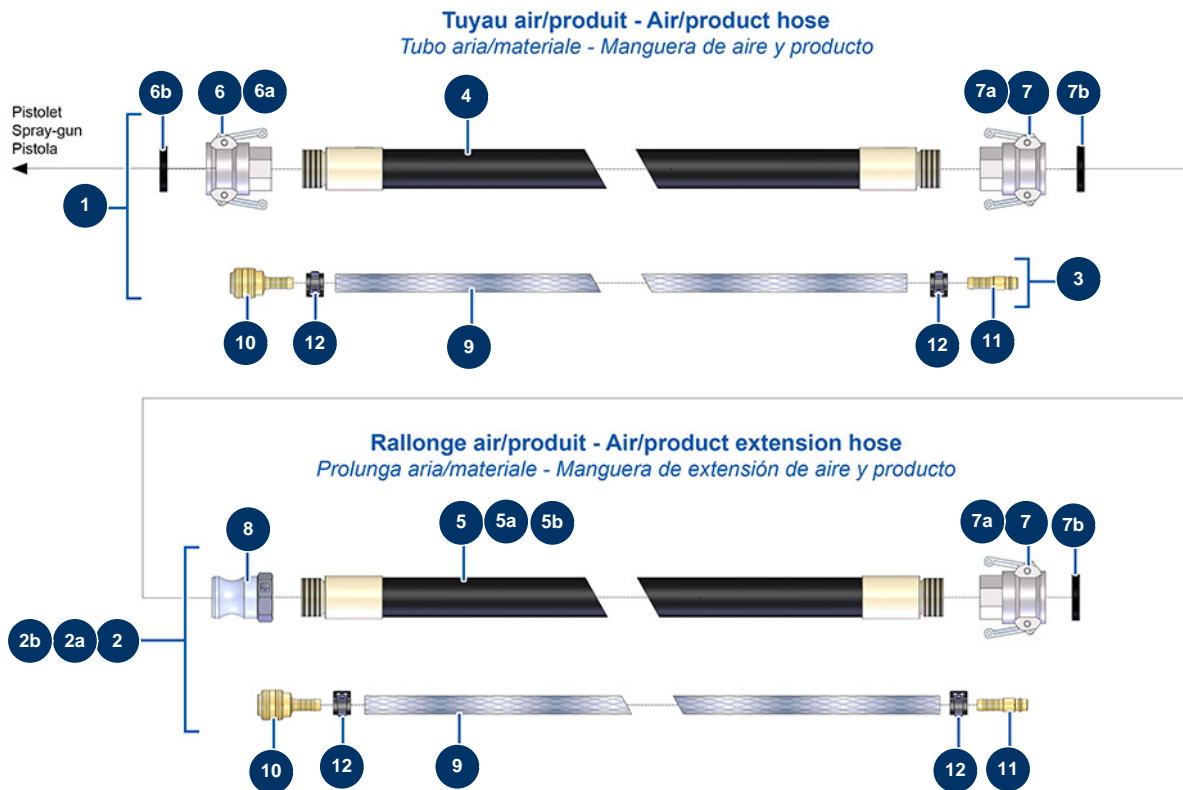


Détails des pièces

| Pos. | Référence | Désignation |
|------|-----------|--|
| 1 | 12848 | Complete membrane electrical box for COMPACT-PRO 30 & 35 |
| 2 | 13015 | Hanging EMERGENCY STOP button Ø16 |
| 3 | 13006 | COMPACT PRO front with membrane |
| 4 | 90996 | 6 x 20 inox cylindrical head screw |
| 5 | 80573 | Hollow washer Ø 6 |
| 6 | 30672 | COMPACT-PRO 30, 35 & 40 electronic card |
| 7 | 30038 | Yellow and green conductive block 6 mm ² |
| 8 | 80482 | Grey conductor block 6 mm ² |
| 9 | 11918 | Coil contactor 24 Volt AC |
| 10 | 80459 | Inverter 230 V - 2.2 KW |
| 11 | 11771 | 12 pins male connector |
| 12 | 12754 | 4-pin male connector |
| 13 | 11772 | 12 pins female connector |

| Pos. | Référence | Désignation |
|------|-----------|---|
| 14 | 12755 | 4-pin female connector |
| 15 | 11361 | EUROPRO COMPACT-PRO 30 electric box gasket |
| 16 | 90214 | Power cable with molded plug 3G 2,5 mm ² |
| 17 | 30332 | 13mm nickel plated sealed cable gland |
| 18 | 30054 | Cable gland locknut of 13 |
| 19 | 80445 | Watertight cable gland of M16 |
| 20 | 11327 | Cable gland locknut of M16 |
| 21 | 30040 | Nickel plated watertight cable gland of 11 CEM |
| 22 | 30333 | Cable gland locknut of 11 CEM |
| 23 | 30060 | 11mm cable gland nut |
| 24 | 30082 | Nickel plated watertight cable gland of 11 |
| 25 | 80442 | Electric plug for IM 16 |
| 26 | 80397 | Water exhaust cork for electrical box |

COMPACT-PRO 30 spraying machine - Hoses and extensions

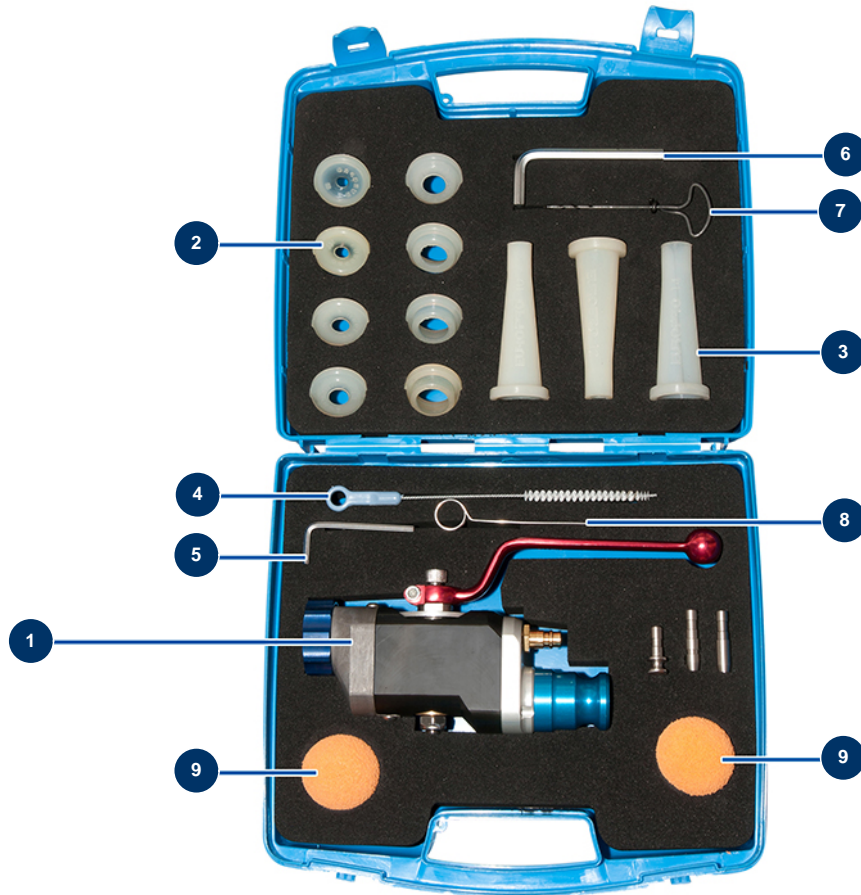


Détails des pièces

| Pos. | Référence | Désignation |
|------|-----------|---|
| 1 | 30143 | ø 32 x 10 metres air product hose 24 P |
| 2 | 12039 | Air-product extension Ø35 x 10 m |
| 2a | 12170 | Air-product extension Ø35 x 15 m |
| 2b | 12077 | Air-product extension Ø35 x 20 m |
| 3 | 91064 | Complete air hose for lance 11,15 m 14P and 24P |
| 4 | 50015 | Ø32 x 10 m product hose outer threaded 1" x 1"1/4 |
| 5 | 11977 | Product hose ø 35 x 10 m threaded 1"1/4 |
| 5a | 11978 | Product hose Ø35 x 15 m outer threaded 1"1/4 |
| 5b | 11979 | Product hose Ø35 x 20 m outer threaded 1"1/4 |
| 6 | 70007 | 1" camlock alu coupling, inner threaded 1" for 6, 8, 14 & 24P |
| 6a | 90689 | 1" cam coupler |
| 6b | 70014 | 1" cam coupler gasket |
| 7 | 70006 | 1"1/4 camlock alu coupling, inner threaded 1"1/4 for 24P |

| Pos. | Référence | Désignation |
|------|-----------|--|
| 7a | 90691 | 1"1/4 cam coupler |
| 7b | 70015 | 1"1/4 cam coupler gasket |
| 8 | 70012 | 1"1/4 inner threaded adapter for 24P |
| 9 | 50003 | Clear braided PVC hose Ø 10 x 16 by the metre |
| 10 | 70004 | Female quick fit coupling with corrugated shank of 9 |
| 11 | 70018 | Corrugate male quick fit coupling of 9 |
| 12 | 12218 | Spring collar Ø 15 |

COMPACT-PRO 30 spraying machine - Spraying lance



Détails des pièces

| Pos. | Référence | Désignation |
|------|-----------|--|
| 1 | 12274 | ABS mortar spray lance 1" coupling |
| 2 | 11760 | Set of spray nozzles Ø 8, 10, 12, 14, 16, 18, 20, 22 - C.P |
| 3 | 11759 | Set of grouting nozzles Ø 10, 12, 14 |
| 4 | 1022035 | Cleaning brush |
| 5 | 13050 | 4mm Allen key |
| 6 | 101013 | 7mm Allen key |
| 7 | 90605 | Tube brush |
| 8 | 1001017 | Un-blocking pin |
| 9 | 90566 | Cleaning ball Ø 50 |