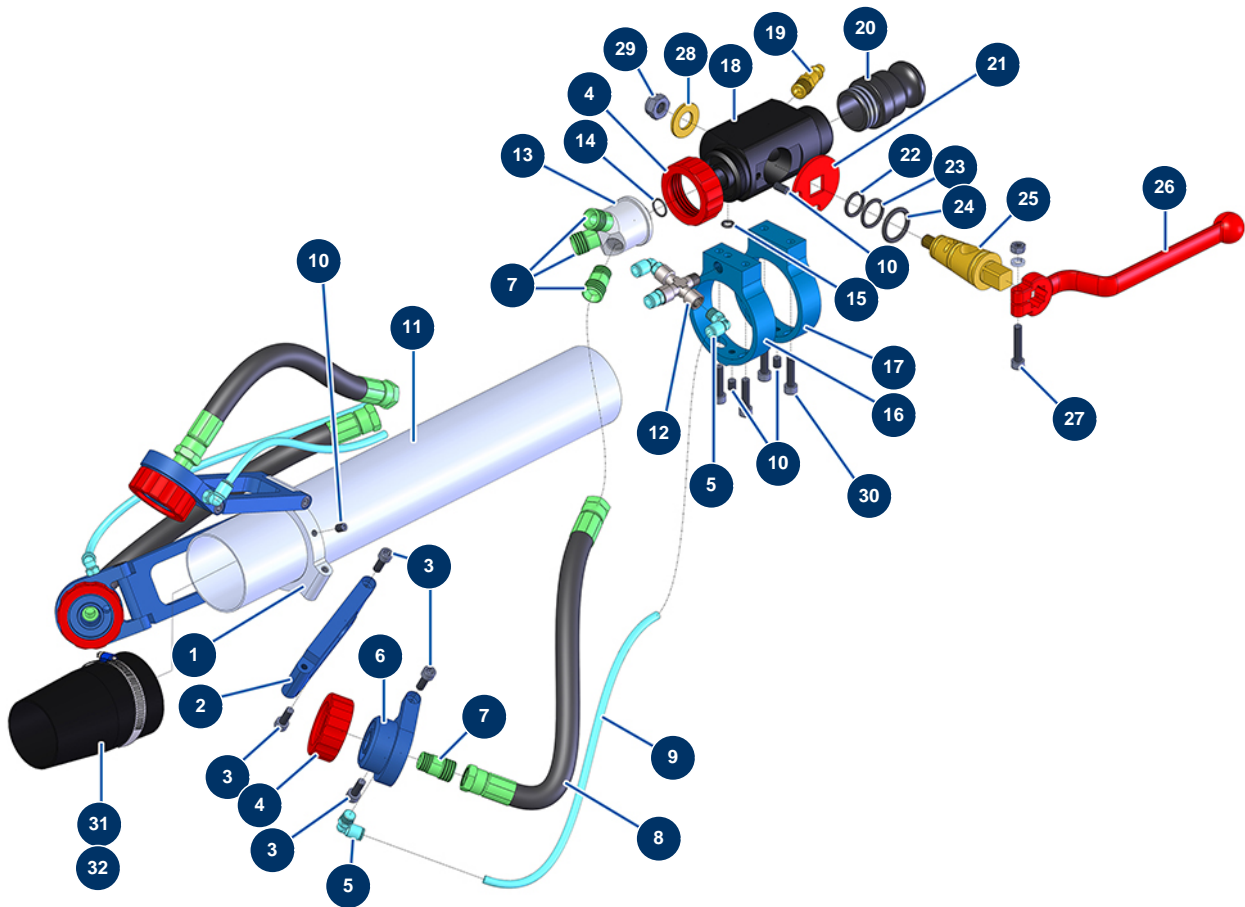


3 heads Ø 63 hemp and lime lance alone - General view



Détails des pièces

| Pos. | Référence | Désignation |
|------|-----------|---|
| 1 | M10668 | 3-headed ring for ø 63 hemp lance tube |
| 2 | M10155 | Hemp lance nozzle extension |
| 3 | 90157 | M6 x 16 cylindrical head screw - CP 60 |
| 4 | 10031 | Aluminium lance ring red |
| 5 | 30124 | Corrugated Legris coupling M1/8" Ø 6 |
| 6 | M10119 | Hemp lance right nozzle support |
| 7 | M10120 | Product inlet coupling for hemp lance |
| 8 | 12206 | Hemp lance product hose Ø 10 x 25 cm |
| 9 | 30403 | Calibrated polyurethane tube ø 4 x 6 black by the metre |
| 10 | 30371 | ABS lance countersunk screw |
| 11 | M10608 | Ø 63 x 460 mm tube for hemp lance |
| 12 | 11154 | Low pressure X M1/8 x F1/8 x F1/8 x F1/8 |
| 13 | M106660 | 13 |

| Pos. | Référence | Désignation |
|------|-----------|--|
| 14 | 14600 | 12 x 1,5 O-ring |
| 15 | 14616 | 6 x 2 O-ring |
| 16 | M10595 | ABS body support for hemp lance air outlet |
| 17 | M10593 | ABS body support for hemp lance |
| 18 | M10125 | Hemp lance body |
| 19 | 80089 | Male quick fit coupling outer threaded 1/4" Ø 6 |
| 20 | 10280 | 1" x M 30/150 alu adapter for 8, 14, 24 and CP30 lance |
| 21 | 10030 | Stop washer |
| 22 | 60026 | O-ring 15,10 x 2,70 |
| 23 | 60027 | O-ring 18,40 x 2,70 |
| 24 | 60028 | O-ring 21,30 x 3,60 |
| 25 | 10029 | Lance brass cone |
| 26 | 20003 | Red bend handle for lance (square of 14) |
| 27 | 90153 | 6 x 30 cylindrical head screw |
| 28 | 10032 | Lance washer |
| 29 | 13981 | M 10 nylstop inox nut |
| 30 | 80614 | 6 x 25 inox cylindrical head screw |
| 31 | M10598 | Ø 63 x 50 hemp lance outlet reduction |
| 32 | 11752 | Worm gear clamp 50 x 70 x 9 |