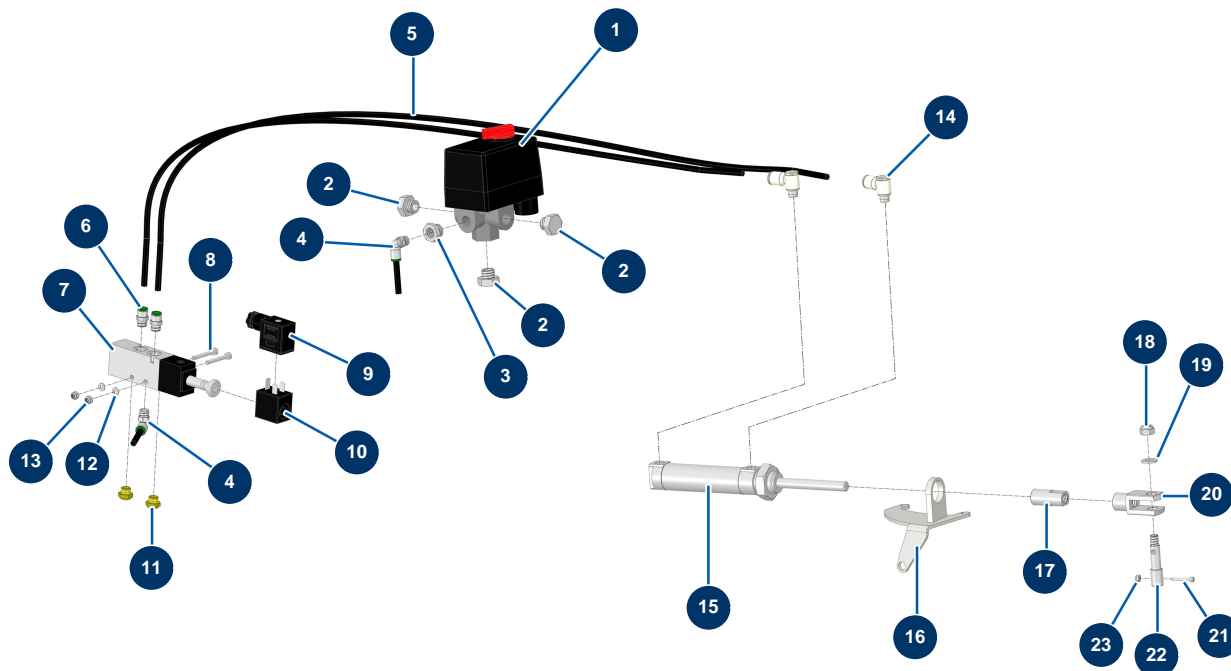


X-PRO D60 V2 spraying machine - Automatic accelerator (option)

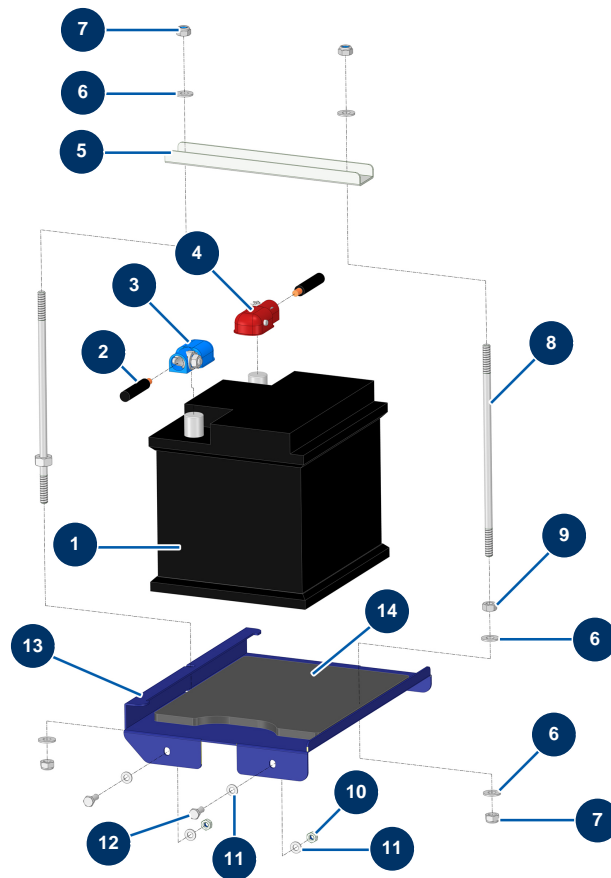


Détails des pièces

| Pos. | Référence | Désignation |
|------|-----------|---|
| 1 | 30006 | Single phase compressor pressure switch |
| 2 | 30118 | 1/4" low-pressure male plug |
| 3 | 90240 | 1/4" MaleC x 1/8" FemaleD low-pressure reduction |
| 4 | 30124 | Corrugated Legris coupling M1/8" Ø 6 |
| 5 | 30403 | Calibrated polyurethane tube ø 4 x 6 black by the metre |
| 6 | 91038 | Legris straight coupling M1/8 Ø 6 |
| 7 | 13525 | 5/2 electro-pneumatic distributor - CP 60 |
| 8 | 11882 | 4 x 30 cylindrical head screw |
| 9 | 13528 | 12 VDC coil connector for electro-pneumatic distributor - CP 60 |
| 10 | 13527 | 12 VDC coil for electro-pneumatic distributor - CP 60 |
| 11 | 12818 | Air silencer 1/8" M - CP 60 |
| 12 | 30267 | ø 4 inox narrow washer |
| 13 | 30266 | M 4 nylstop nut |

| Pos. | Référence | Désignation |
|------|-----------|--|
| 14 | 13529 | Banjo flow limiter ø 6 with 1/8" adjustable screw - CP 60 |
| 15 | 12816 | Automatic accelerator cylinder - CP 60 |
| 16 | C21307 | Mounting plate for pneumatic accelerator cylinder 3 cylinders diesel CP 60 V17 |
| 17 | M10476 | Automatic accelerator stop - CP 60 |
| 18 | 13980 | M 8 nylstop inox nut |
| 19 | 30256 | ø 8 inox narrow washer |
| 20 | 12817 | Female clevis for automatic accelerator cylinder - CP 60 |
| 21 | 310012 | 3 x 20 cylindrical head screw |
| 22 | M10477 | Automatic accelerator finger - CP 60 |
| 23 | 12737 | M 3 nylstop nut |

X-PRO D60 V2 spraying machine - Battery

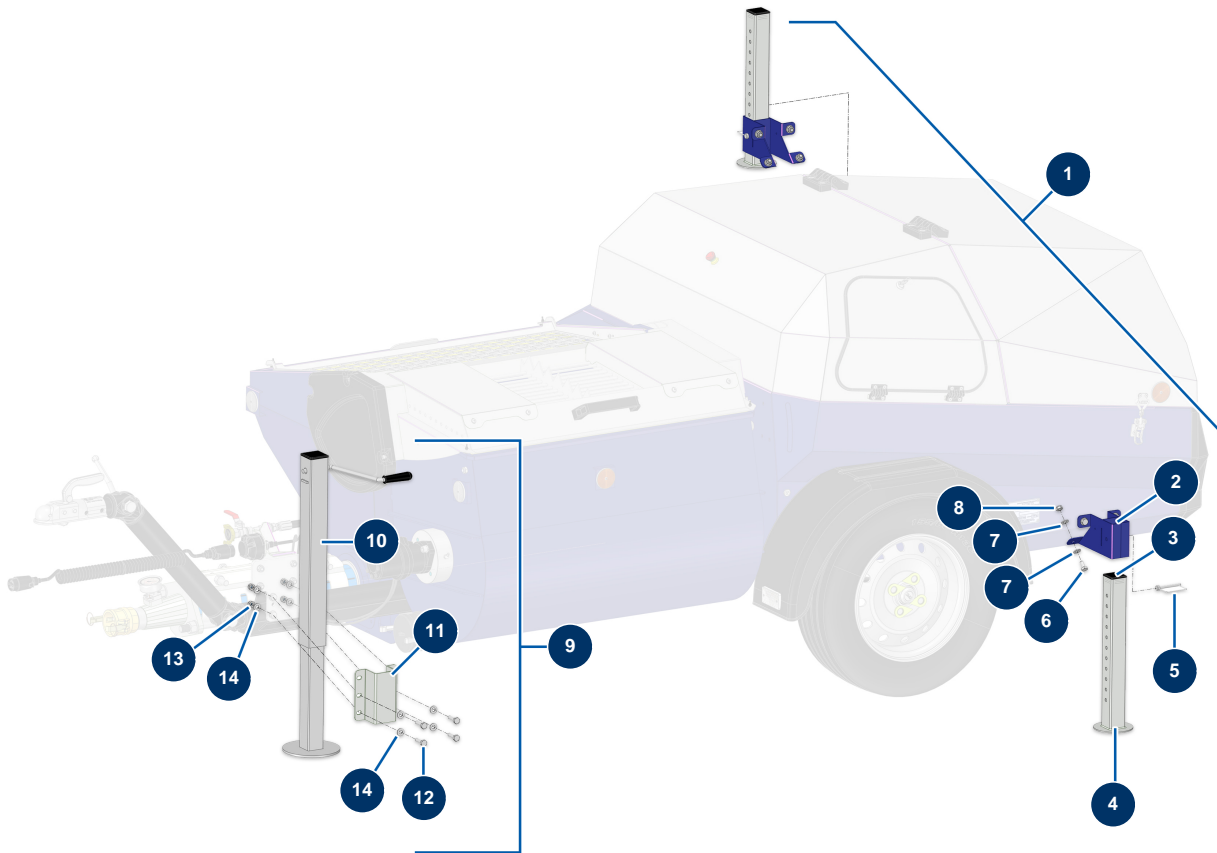


Détails des pièces

| Pos. | Référence | Désignation |
|------|-----------|---|
| 1 | 80188 | C.P 60 battery |
| 2 | 14900 | 16 mm² black battery cable by the metre |
| 3 | 14573 | Self-clamping battery terminal - blue |
| 4 | 14572 | Self-clamping battery terminal + red |
| 5 | C23982CST | |
| 6 | 80260 | ø 8 inox medium washer |
| 7 | 13980 | M 8 nylstop inox nut |
| 8 | | 8 |
| 9 | 90440 | M 8 zinc plated nut |
| 10 | 20004 | M 6 nylstop nut |
| 11 | 70087 | ø 6 inox narrow washer |
| 12 | 12069 | THEF 6 x 16 screw |
| 13 | C23981 | 13 |

| Pos. | Référence | Désignation |
|------|-----------|-------------|
| 14 | 14168 | |

X-PRO D60 V2 spraying machine - Stand - Stabilizers (options)

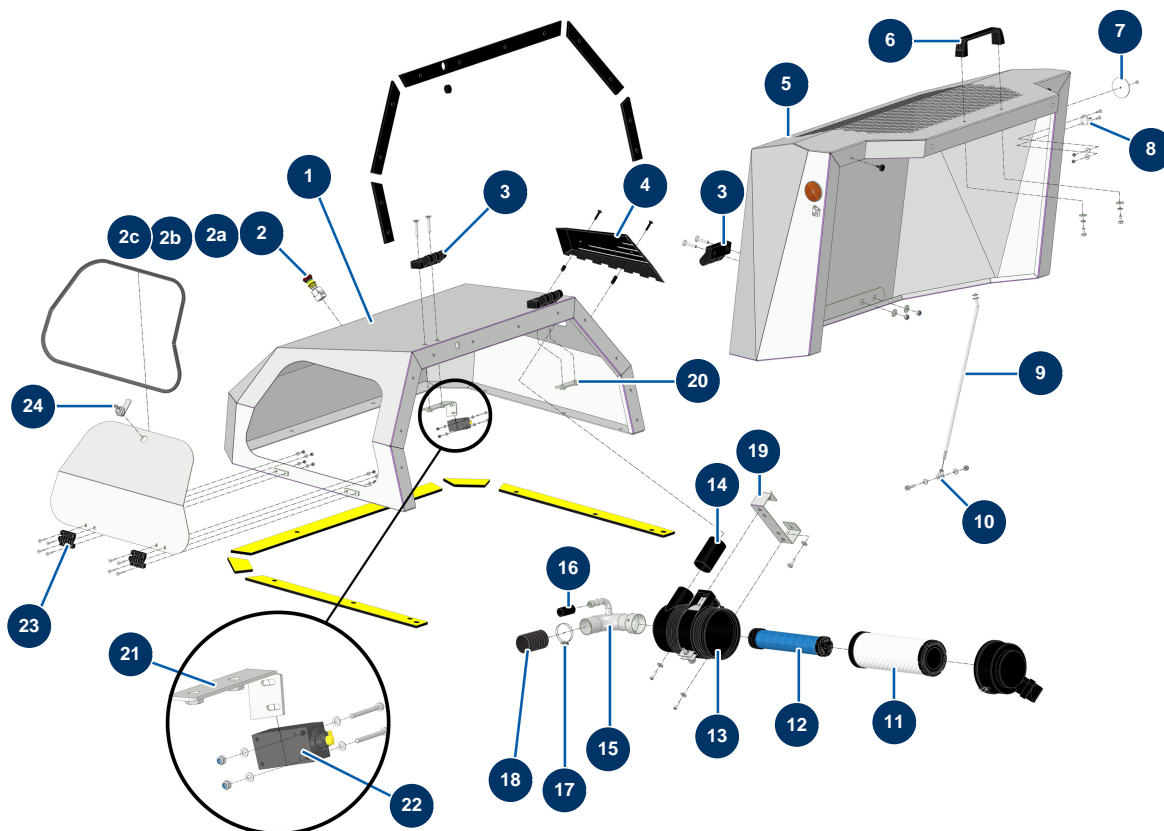


Détails des pièces

| Pos. | Référence | Désignation |
|------|-----------|---|
| 1 | 15327 | Rear stabilizers option for X-PRO D60/80 & E70 version 2024 |
| 2 | C23992 | 2 |
| 3 | 12665 | Plastic end cap for 50 x 50 mm tube |
| 4 | C23988 | 4 |
| 5 | 15304 | |
| 6 | 30273 | THEF 8 x 20 screw |
| 7 | 30256 | ø 8 inox narrow washer |
| 8 | 13980 | M 8 nylstop inox nut |
| 9 | 14547 | Stand option - X-PRO D60 to 85 |
| 10 | 13106 | Retractable stand - CP 60 |
| 11 | C22595 | 11 |
| 12 | 12934 | THEF 10 x 35 screw |
| 13 | 60013 | M 10 nylstop nut |

| Pos. | Référence | Désignation |
|------|-----------|-------------------------|
| 14 | 80261 | ø 10 inox medium washer |

X-PRO D60 V2 spraying machine - Bodywork

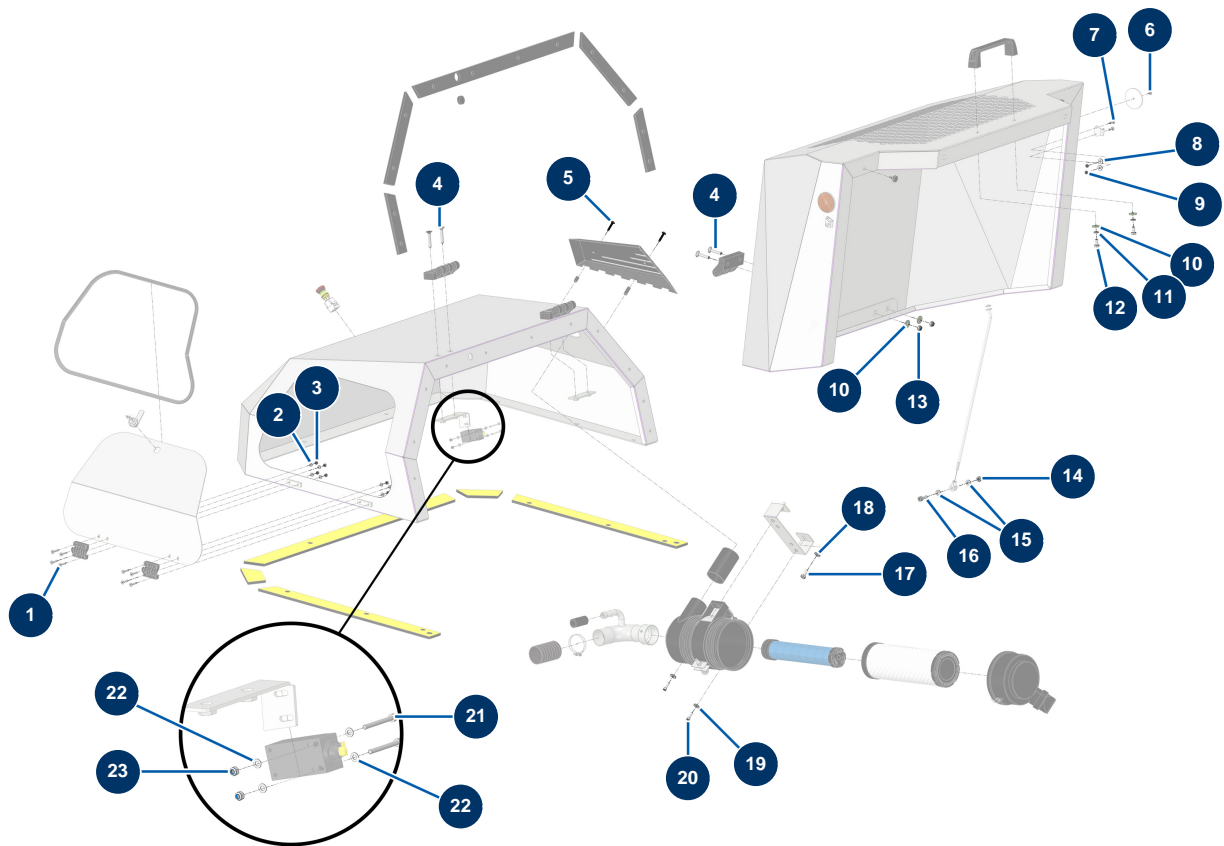


Détails des pièces

| Pos. | Référence | Désignation |
|------|-----------|--|
| 1 | C23743 | 1 |
| 2 | 90727 | Hook emergency stop button - CP 60 |
| 2a | 12664 | Security switch adapter / emergency stop button - C.P 60 |
| 2b | 80448 | M 20 waterproof cable gland |
| 2c | 12663 | Push safety switch - C.P. 60 |
| 3 | 12797 | Hood hinge - C.P 60 |
| 4 | C23749 | 4 |
| 5 | C23756 | |
| 6 | 1042523 | CP 60 grid handle |
| 7 | 12361 | Round & orange reflector - C.P 60 |
| 8 | 15022 | Adjustable toggle locking hook |
| 9 | C23859 | 9 |
| 10 | 13240 | |

| Pos. | Référence | Désignation |
|------|-----------|---|
| 11 | 30762 | Donaldson filter standard air cartridge for KOHLER KDW 1003 & 1404 motors |
| 12 | 30763 | Donaldson filter safety air cartridge for KOHLER KDW 1003 & 1404 motors |
| 13 | 30761 | Complete Donaldson cyclonic air filter for KOHLER KDW 1003 & 1404 engine |
| 14 | C23744 | 14 |
| 15 | C22280 | 15 |
| 16 | 10727 | |
| 17 | 12723 | Double wire clamp ø 56 x 65 - CP 60 |
| 18 | 12538 | PVC GAS sheath Ø 50 by the metre - C.P 60 |
| 19 | C23746 | 19 |
| 20 | C23738 | 20 |
| 21 | C24070 | 21 |
| 22 | 12663 | Push safety switch - C.P. 60 |
| 23 | 13036 | |
| 24 | 13035 | |

X-PRO D60 V2 spraying machine - Bodywork (screws and bolts)

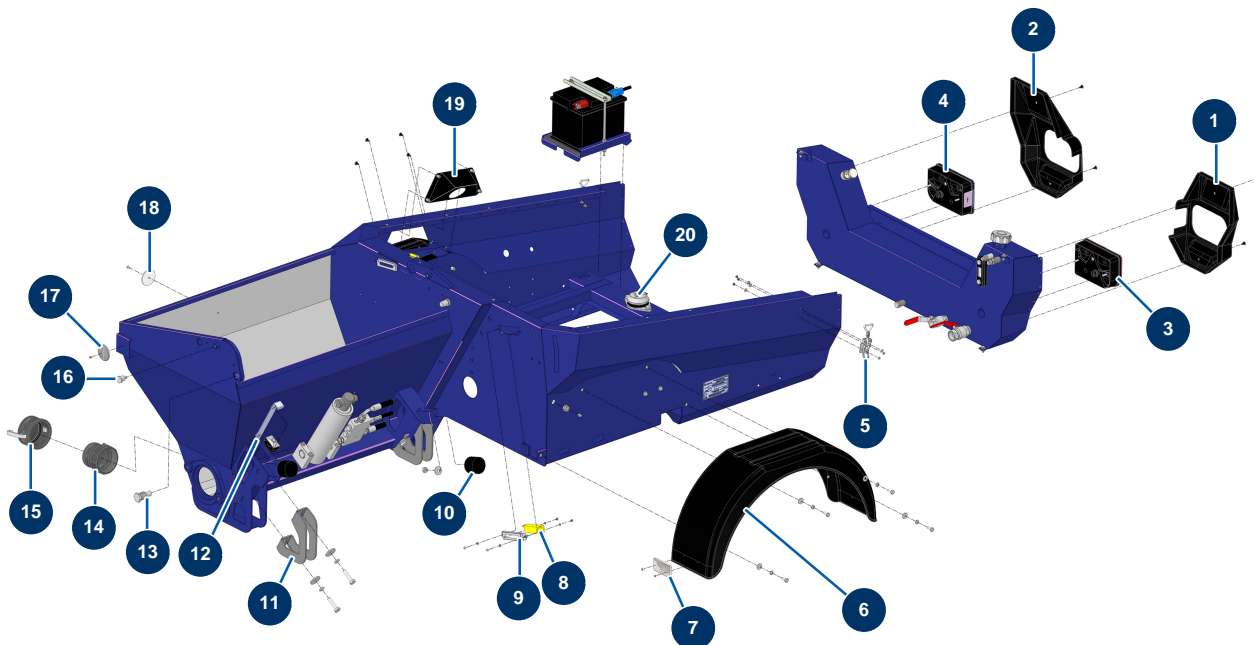


Détails des pièces

| Pos. | Référence | Désignation |
|------|-----------|-------------------------------|
| 1 | 12121 | 5 x 25 countersunk head screw |
| 2 | 70085 | ø 5 narrow washer |
| 3 | 11880 | M 5 nylstop nut |
| 4 | 13620 | 8 x 45 countersunk head screw |
| 5 | 15499 | |
| 6 | 12463 | ø 5 x 16 aluminium POP rivet |
| 7 | 90130 | 5 x 16 countersunk head screw |
| 8 | 30290 | ø 5 large washer |
| 9 | 70086 | M 5 nylstop inox nut |
| 10 | 30292 | ø 8 inox large washer |
| 11 | 80269 | Grower washer ø 8 |
| 12 | 30295 | THEF 8 x 16 screw |
| 13 | 90127 | M 8 nylstop nut |

| Pos. | Référence | Désignation |
|------|-----------|------------------------------------|
| 14 | 13980 | M 8 nylstop inox nut |
| 15 | 30256 | ∅ 8 inox narrow washer |
| 16 | 12783 | 8 x 25 cylindrical head screw |
| 17 | 30273 | THEF 8 x 20 screw |
| 18 | 80260 | ∅ 8 inox medium washer |
| 19 | 30291 | ∅ 6 large washer |
| 20 | 90996 | 6 x 20 inox cylindrical head screw |
| 21 | 11403 | 4 x 40 cylindrical head screw |
| 22 | 30267 | ∅ 4 inox narrow washer |
| 23 | 30266 | M 4 nylstop nut |

X-PRO D60 V2 spraying machine - Chassis

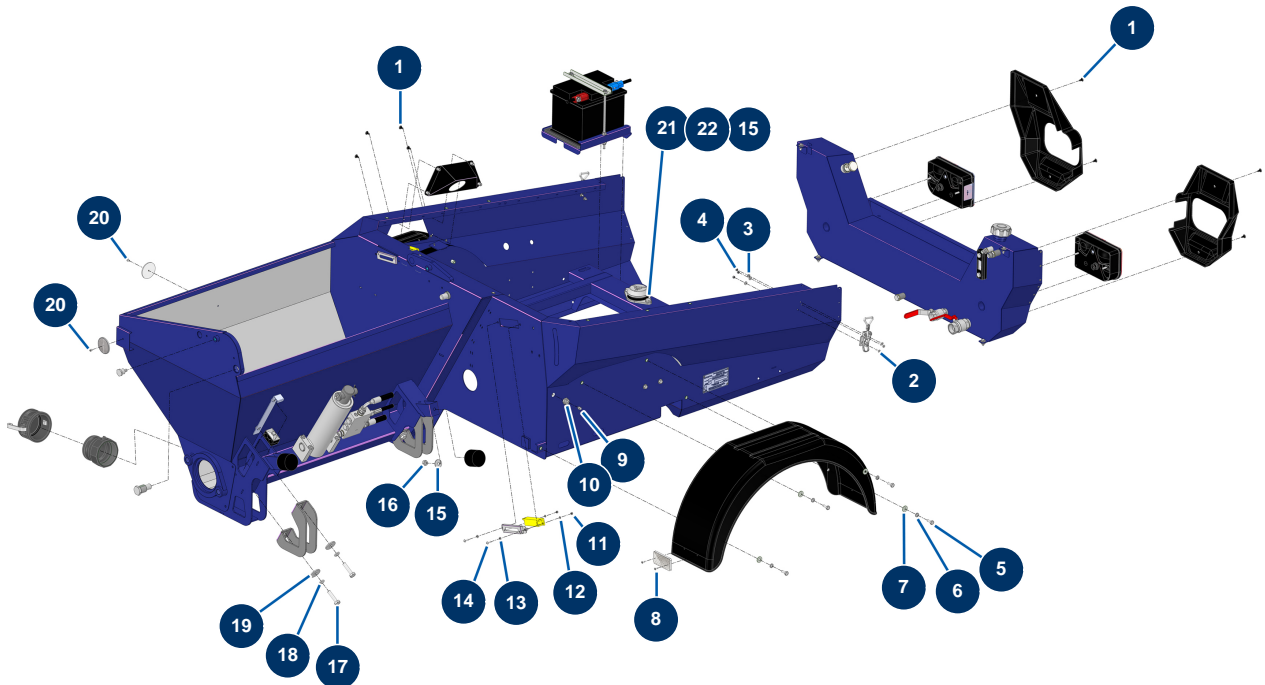


Détails des pièces

| Pos. | Référence | Désignation |
|------|-----------|--|
| 1 | 20818 | |
| 2 | 20819 | |
| 3 | 12802 | Complete left rear lights - C.P 60 |
| 4 | 12803 | Complete right rear lights - C.P 60 |
| 5 | 15021 | Adjustable toggle without hook |
| 6 | 20212 | X-PRO D200 & X-SCREED plastic mudguard |
| 7 | 15260 | Triangular red reflector |
| 8 | 12120 | Grid safety sensor for JETMIX, MIXPRO 14, 70 & 100 |
| 9 | C23735 | 9 |
| 10 | 90765 | Ø 60 x 45 M10 stop |
| 11 | C23757 | 11 |
| 12 | C22109 | Hopper mounting strip CP 60, 80 & 120 |
| 13 | M20014 | Mixer pivot finger - CP 60 & 80 |

| Pos. | Référence | Désignation |
|------|-----------|--|
| 14 | 13172 | Polypro 3" threaded adapter - C.P 60 |
| 15 | 13171 | Polypro 3" female cam plug - C.P 60 |
| 16 | M10921 | Anti-dust grid locking pin X-PRO D60/80 |
| 17 | 12362 | Round & white reflector - C.P 60 |
| 18 | 12361 | Round & orange reflector - C.P 60 |
| 19 | C23221 | 19 |
| 20 | 20786 | Silentbloc for X-PRO D60, D140 motor plate |

X-PRO D60 V2 spraying machine - Chassis (screws and bolts)

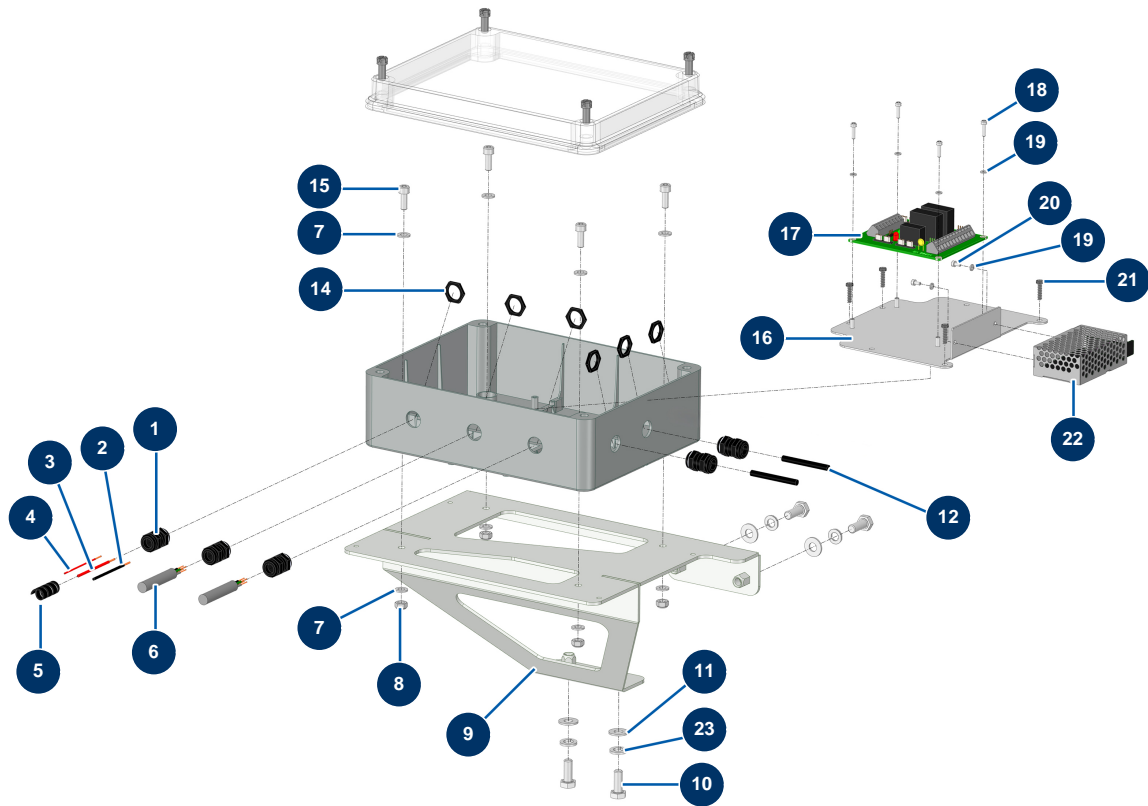


Détails des pièces

| Pos. | Référence | Désignation |
|------|-----------|-------------------------------|
| 1 | 15497 | |
| 2 | 90130 | 5 x 16 countersunk head screw |
| 3 | 11737 | ø 5 inox medium washer |
| 4 | 11880 | M 5 nylstop nut |
| 5 | 30273 | THEF 8 x 20 screw |
| 6 | 80269 | Grower washer ø 8 |
| 7 | 30292 | ø 8 inox large washer |
| 8 | 14790 | ø 4 x 14 aluminium POP rivet |
| 9 | 20044 | 1/8" M straight lubricator |
| 10 | 20159 | |
| 11 | 30266 | M 4 nylstop nut |
| 12 | 30267 | ø 4 inox narrow washer |
| 13 | 70085 | ø 5 narrow washer |

| Pos. | Référence | Désignation |
|------|-----------|-----------------------------------|
| 14 | 11735 | Inox mushroom head screw M 5 x 16 |
| 15 | 30293 | ∅ 10 inox large washer |
| 16 | 90453 | M 10 nut |
| 17 | 12467 | THEF 12 x 50 screw |
| 18 | 12462 | Grower washer ∅ 12 |
| 19 | 30294 | ∅ 12 inox large washer |
| 20 | 12463 | ∅ 5 x 16 aluminium POP rivet |
| 21 | 30257 | THEF 10 x 25 screw |
| 22 | 60013 | M 10 nylstop nut |

X-PRO D60 V2 spraying machine - Electrical box

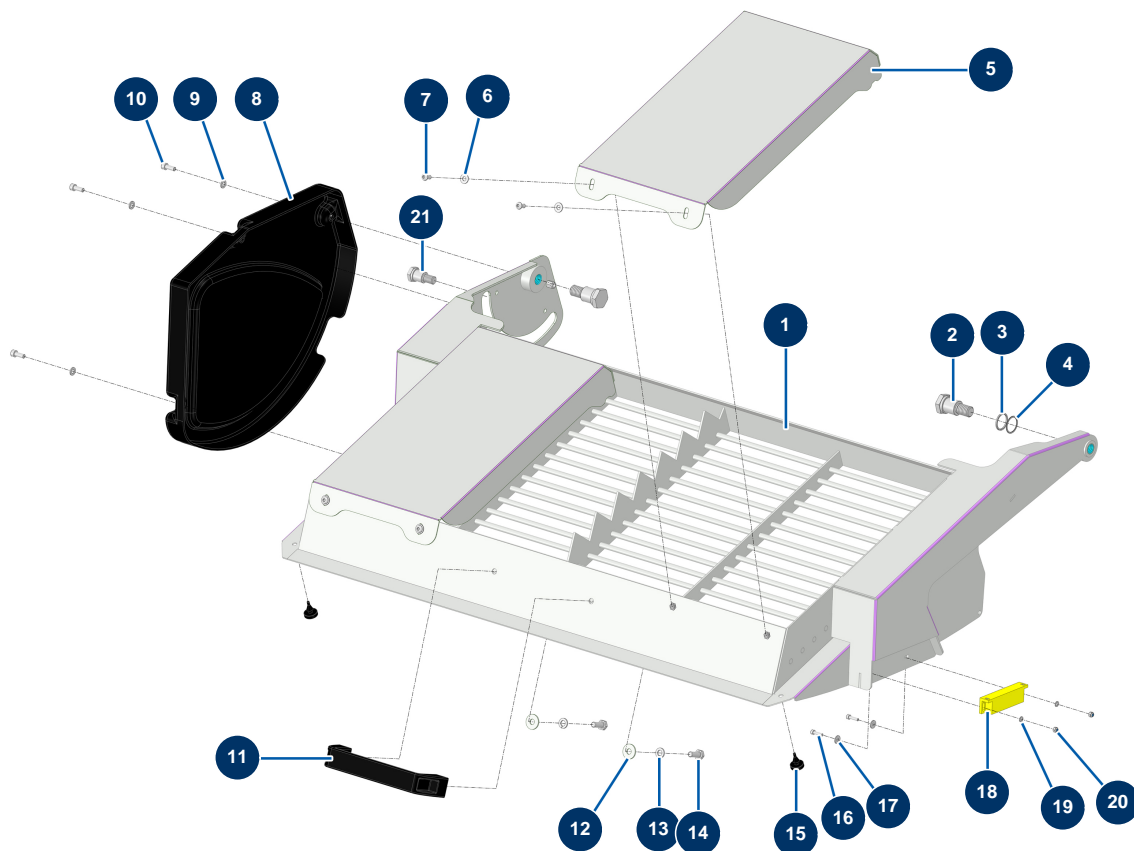


Détails des pièces

| Pos. | Référence | Désignation |
|------|-----------|--|
| 1 | 80445 | Watertight cable gland of M16 |
| 2 | 30391 | |
| 3 | 60023 | |
| 4 | 30020 | |
| 5 | 80233 | |
| 6 | 11964 | H05VVF 4G1 grey electrical cable by the metre |
| 7 | 70087 | ∅ 6 inox narrow washer |
| 8 | 14217 | M 6 nylstop inox nut |
| 9 | C23774 | 9 |
| 10 | 30273 | THEF 8 x 20 screw |
| 11 | 80260 | ∅ 8 inox medium washer |
| 12 | 12120 | Grid safety sensor for JETMIX, MIXPRO 14, 70 & 100 |
| 14 | 11327 | Cable gland locknut of M16 |

| Pos. | Référence | Désignation |
|------|-----------|--|
| 15 | 90157 | M6 x 16 cylindrical head screw - CP 60 |
| 16 | C24049C | 16 |
| 17 | 12988 | Safety electronic card - C.P 60 |
| 18 | 12249 | 3 x 12 cylindrical head screw |
| 19 | 12108 | ø 3 inox narrow washer |
| 20 | 13329 | 3 x 6 cylindrical head screw |
| 21 | 310022 | 21 |
| 22 | 15072 | 12VDC / 24VDC transformer |
| 23 | 80269 | Grower washer ø 8 |

X-PRO D60 V2 spraying machine - Mixer grid

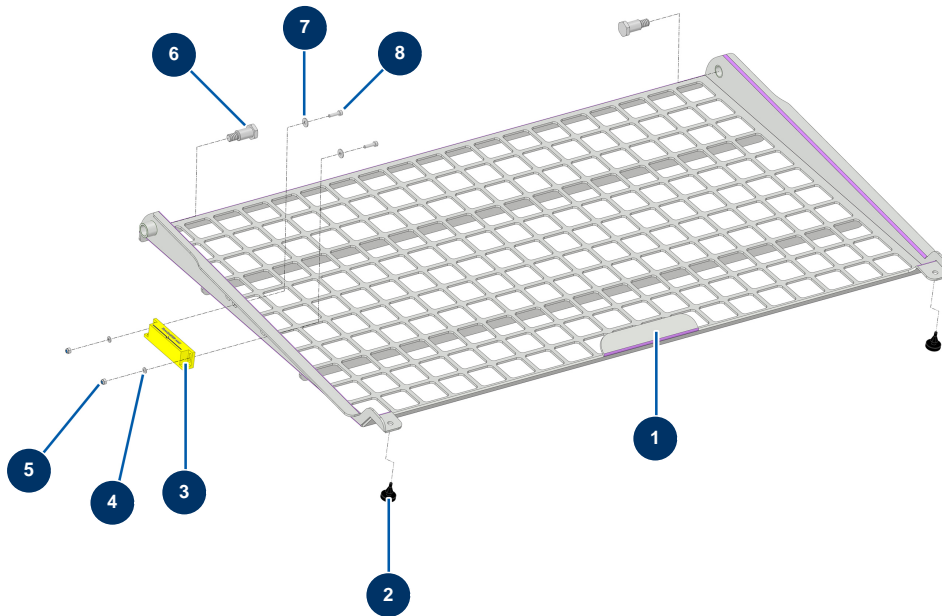


Détails des pièces

| Pos. | Référence | Désignation |
|------|-----------|---|
| 1 | C23800 | 1 |
| 2 | M20013 | Pivot pin for CP 60 & 80 anti-dust grid |
| 3 | | 3 |
| 4 | | 4 |
| 5 | C24064 | 5 |
| 6 | 80259 | Ø 6 medium washer |
| 7 | 13197 | Inox mushroom head screw M 6 x 12 |
| 8 | 14221 | |
| 9 | 70087 | ø 6 inox narrow washer |
| 10 | 90157 | M6 x 16 cylindrical head screw - CP 60 |
| 11 | 1042523 | CP 60 grid handle |
| 12 | 30292 | ø 8 inox large washer |
| 13 | 80269 | Grower washer ø 8 |

| Pos. | Référence | Désignation |
|------|-----------|---|
| 14 | 30273 | THEF 8 x 20 screw |
| 15 | 12385 | Mobile hood foam rubber stop - C.P 60 |
| 16 | 90137 | 4 x 16 cylindrical head screw |
| 17 | 90129 | ø 4 inox large washer |
| 18 | 13468 | Safety grid captor coded magnet for JETMIX, MIXPRO 14, 70 & 100 |
| 19 | 30267 | ø 4 inox narrow washer |
| 20 | 30266 | M 4 nylstop nut |
| 21 | M10921 | Anti-dust grid locking pin X-PRO D60/80 |

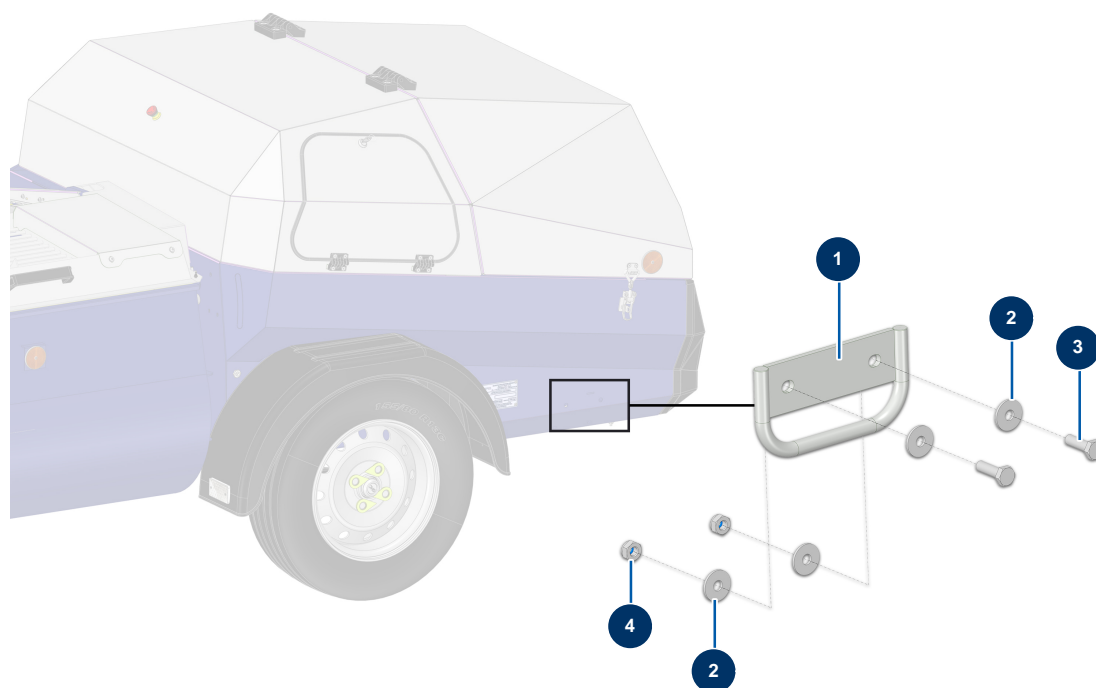
X-PRO D60 V2 spraying machine - Hopper grid



Détails des pièces

| Pos. | Référence | Désignation |
|------|-----------|---|
| 1 | C22140 | Mortar hopper grid CP 60 & 80 |
| 2 | 12385 | Mobile hood foam rubber stop - C.P 60 |
| 3 | 13468 | Safety grid captor coded magnet for JETMIX, MIXPRO 14, 70 & 100 |
| 4 | 30267 | ∅ 4 inox narrow washer |
| 5 | 30266 | M 4 nylstop nut |
| 6 | M20016 | Pivot pin for CP 60 & 80 mortar hopper grid |
| 7 | 90129 | ∅ 4 inox large washer |
| 8 | 90137 | 4 x 16 cylindrical head screw |

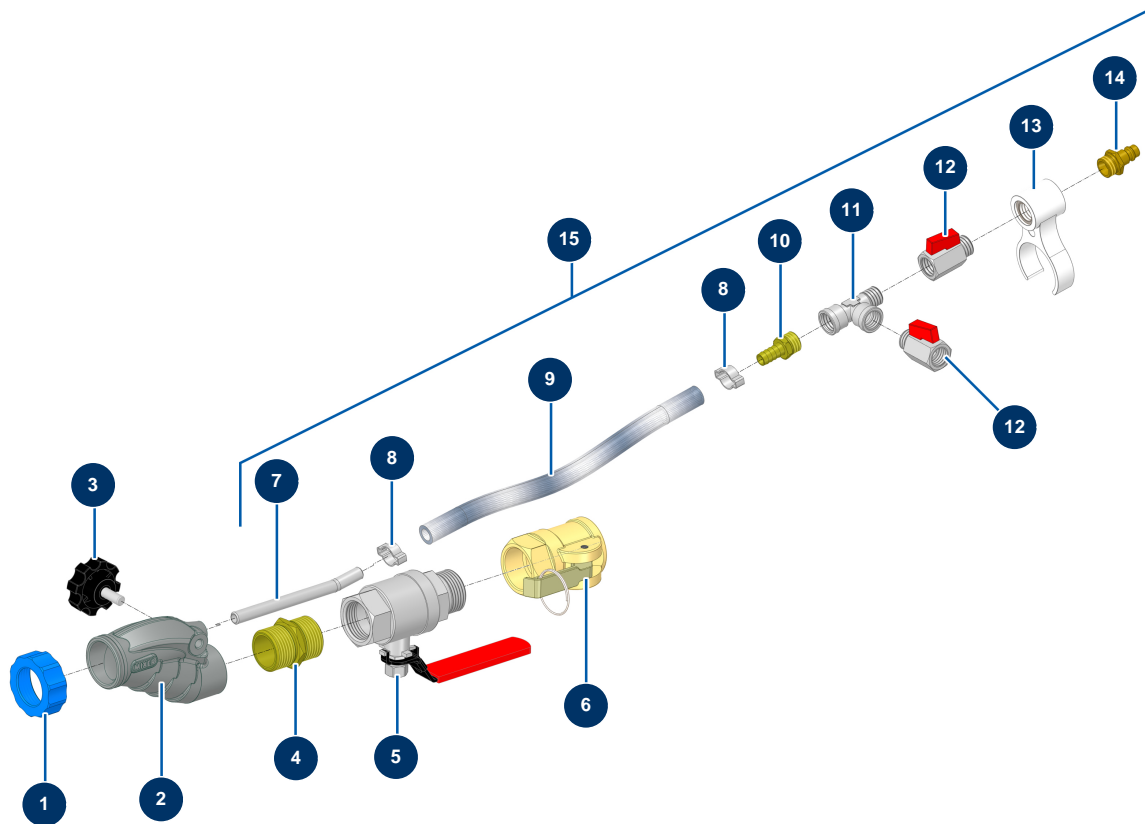
X-PRO D60 V2 spraying machine - Lifting kit (option)



Détails des pièces

| Pos. | Référence | Désignation |
|------|-----------|--|
| 1 | C20976 | Chassis docking support CP 60 version 7.13 |
| 2 | 80263 | Very large inox washer Ø 8 |
| 3 | 11544 | THEF 8 x 25 screw |
| 4 | 90127 | M 8 nylstop nut |

X-PRO D60 V2 spraying machine - Spraying lance

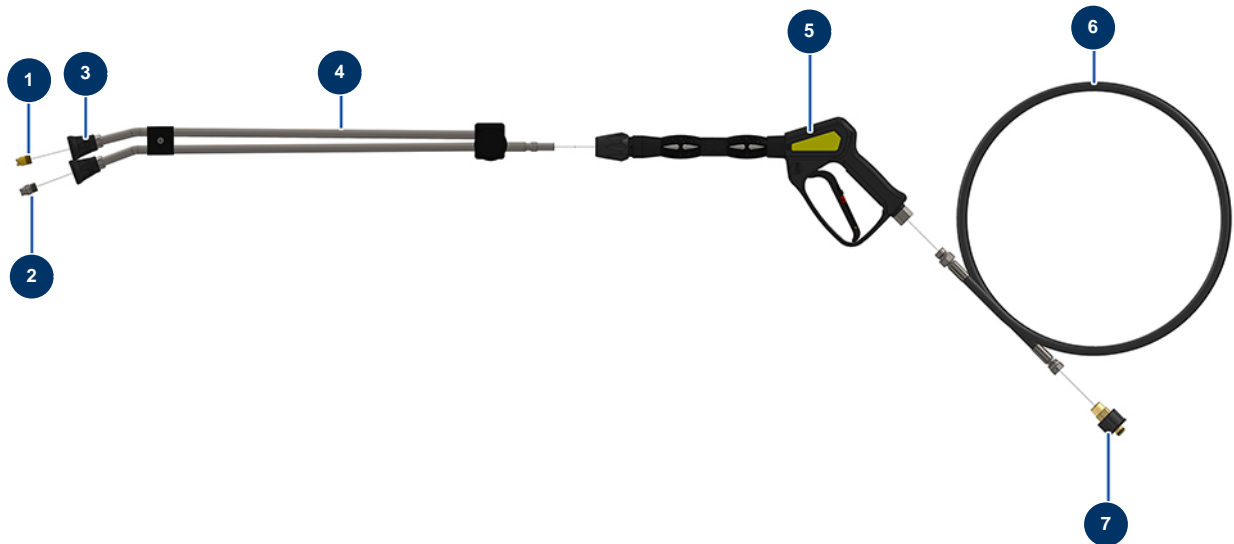


Détails des pièces

| Pos. | Référence | Désignation |
|------|-----------|--|
| 1 | 11817 | Blue ring for mortar lance |
| 2 | 12725 | Inner threaded 1" aluminium lance machined body |
| 3 | 11514 | Plastic thumb wheel M8 x 20 |
| 4 | 12527 | 1" MaleD x 1" MaleD - CP 60 low-pressure nipple |
| 5 | 12592 | C.P 60 spraying lance 1"M-F detachable valve |
| 6 | 12374 | C.P 60 spraying lance 1" inner threaded steel cam single coupler |
| 7 | M10326 | Lance air injector without hose - C.P 60 |
| 8 | 80429 | Ear clamp 15 x 18 |
| 9 | 50003 | Clear braided PVC hose Ø 10 x 16 by the metre |
| 10 | 80325 | 3/8 corrugated outer threaded coupling Ø 10 |
| 11 | 12530 | M3/8" x F3/8" x F3/8" low pressure T |
| 12 | 30136 | 3/8" mini lux valve |
| 13 | 11506 | Traditional lance junction circlip |

| Pos. | Référence | Désignation |
|-------------|------------------|---|
| 14 | 70044 | 3/8" outer threaded male quick fit coupling |
| 15 | 15527 | |

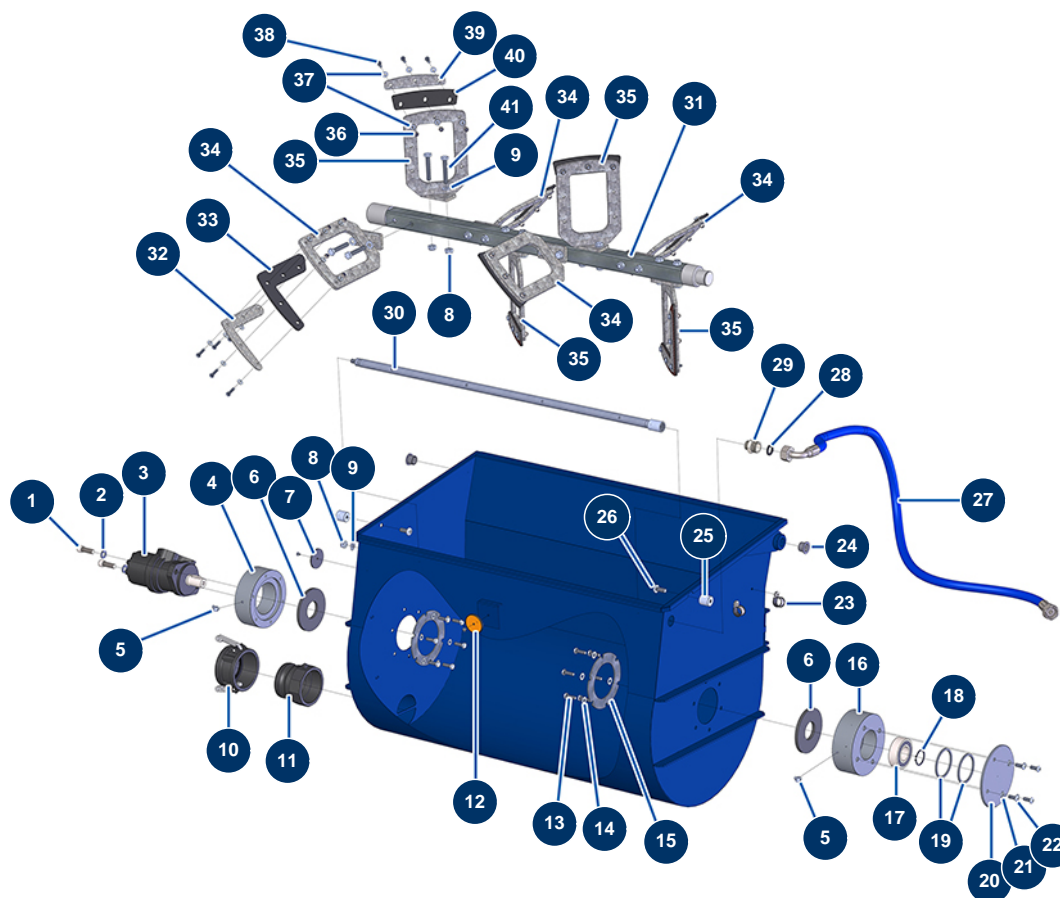
X-PRO D60 V2 spraying machine - High pressure washer lance (option)



Détails des pièces

| Pos. | Référence | Désignation |
|------|-----------|---|
| 1 | 90307 | Low pressure nozzle 50°-40 |
| 2 | 90305 | High pressure nozzle 15°-45 |
| 3 | 12415 | Double elbow lance hose nozzle holder, 600 mm, KW coupler |
| 4 | 12166 | Double elbow lance hose 600 mm, KW coupler |
| 5 | 12165 | Washer spray-gun with protected hose 310 bars, KW coupler |
| 6 | 12071 | Washer hose Ø 8-315 bar 10 metres |
| 7 | 90328 | M22-150 F x 3/8 M female quick fit attachment |

X-PRO D60 V2 spraying machine - Mixer

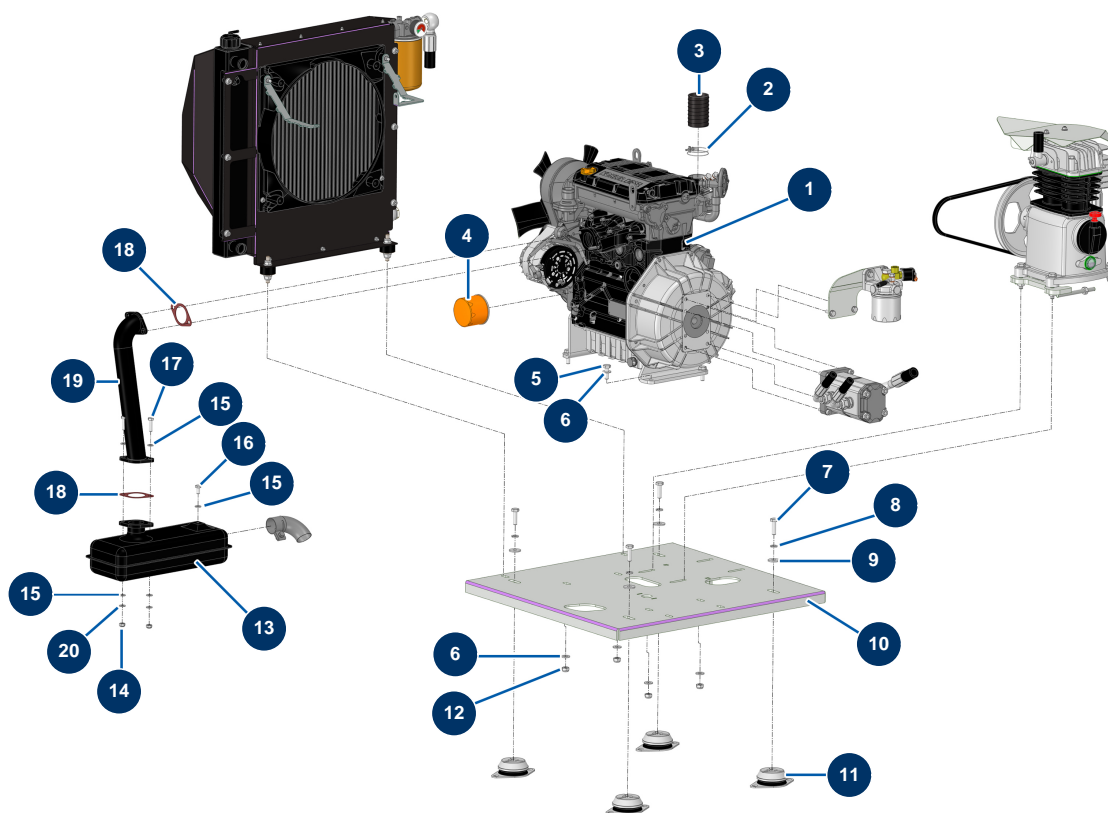


Détails des pièces

| Pos. | Référence | Désignation |
|------|-----------|---------------------------------------|
| 1 | 12461 | 12 x 35 cylindrical head screw |
| 2 | 12462 | Grower washer ø 12 |
| 3 | 12403 | Hydraulic motor BMR 250 mixer - CP 60 |
| 4 | M10244 | Mixer motor bearing housing - CP60 |
| 5 | 12397 | 45° x M6 greaser - C.P 60 |
| 6 | 12511 | Tank base gasket - C.P 60 |
| 7 | 12362 | Round & white reflector - C.P 60 |
| 8 | 60013 | M 10 nylstop nut |
| 9 | 30280 | ø 10 inox narrow washer |
| 10 | 13171 | Polypro 3" female cam plug - C.P 60 |
| 11 | 13172 | Polypro 3" threaded adapter - C.P 60 |
| 12 | 12361 | Round & orange reflector - C.P 60 |
| 13 | 11544 | THEF 8 x 25 screw |

| Pos. | Référence | Désignation |
|------|-----------|---|
| 14 | 30256 | ø 8 inox narrow washer |
| 15 | C20389 | Reinforcement washer - CP60 |
| 16 | M10243 | Mixer bearing - CP 60 |
| 17 | 12479 | Self-aligning ball bearing Ø 35 x 72 x 23 - C.P 60 |
| 18 | 12481 | Ø 35 outer circlip - CP 60 |
| 19 | M10293 | Mixer hopper bearing wedging ring - C.P 60 |
| 20 | C20510 | CP60 V17 bearing block cover |
| 21 | 80269 | Grower washer ø 8 |
| 22 | 12111 | 8 x 20 inox cylindrical pan head screw |
| 23 | 13179 | ø 20 cable collar - CP 60 |
| 24 | 12418 | Bearing with flange 20/23 x 16 - C.P 60 |
| 25 | M20005 | Slide pin for mixer tank CP 60, 70 & 80 |
| 26 | 14169 | 10 x 25 inox cylindrical pan head screw |
| 27 | 13625 | Flexible hose 221 - mixer hopper water supply - C.P 60 from 11/2015 |
| 28 | 11618 | 3/4" red fiber flat gasket |
| 29 | 11891 | 1/2" MaleD x 3/4" MaleD low-pressure nipple |
| 30 | C20605 | Mixer water distribution ramp - C.P 60 |
| 31 | C20568 | CP 60 V17 tank bottom driveshaft |
| 32 | C22153 | CP 60 2017 blade end flap tightening plate |
| 33 | 14127 | CP 60 & 80 mixer end blade flap |
| 34 | C20422 | Mixing right paddle - C.P 60 |
| 35 | C20421 | Mixing left paddle - C.P 60 |
| 36 | 14217 | M 6 nylstop inox nut |
| 37 | 80259 | Ø 6 medium washer |
| 38 | 14218 | THEF 6 x 25 inox screw |
| 39 | C22152 | CP 60 2017 blade flap tightening plate |
| 40 | 14128 | CP 60 & 80 mixer blade flap |
| 41 | 30261 | THEF 10 x 60 screw |

X-PRO D60 V2 spraying machine - Motorisation

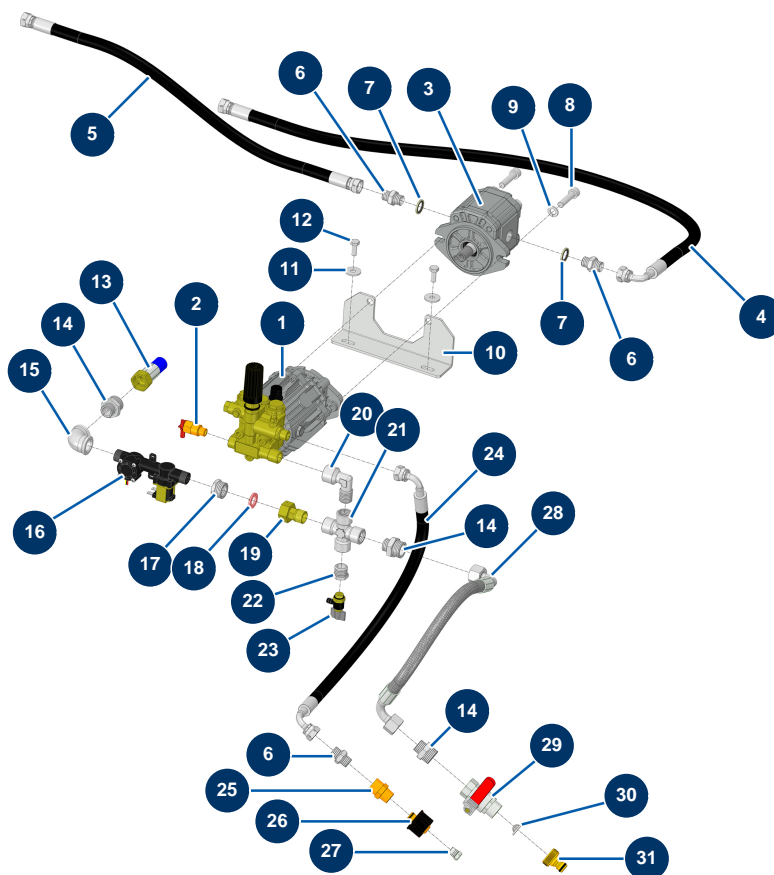


Détails des pièces

| Pos. | Référence | Désignation |
|------|-----------|---|
| 1 | 91197 | Diesel motor KOHLER KDW 1003 gear |
| 2 | 12723 | Double wire clamp \varnothing 56 x 65 - CP 60 |
| 3 | 12538 | PVC GAS sheath \varnothing 50 by the metre - C.P 60 |
| 4 | 80334 | FOCS LDW1003, KDW1003 motor oil filter |
| 5 | 30258 | THEF 10 x 30 screw |
| 6 | 80261 | \varnothing 10 inox medium washer |
| 7 | 20766 | 7 |
| 8 | 12462 | Grower washer \varnothing 12 |
| 9 | 30294 | \varnothing 12 inox large washer |
| 10 | C23843 | 10 |
| 11 | 20786 | Silentbloc for X-PRO D60, D140 motor plate |
| 12 | 60013 | M 10 nylstop nut |
| 13 | 30539 | CP 60 diesel motor exhaust |

| Pos. | Référence | Désignation |
|------|-----------|---|
| 14 | 90440 | M 8 zinc plated nut |
| 15 | 30256 | ∅ 8 inox narrow washer |
| 16 | 30295 | THEF 8 x 16 screw |
| 17 | 30205 | THEF 8 x 30 screw |
| 18 | 30793 | LOMBARDINI motor exhaust pipe gasket - C.P 60 |
| 19 | C23848 | 19 |
| 20 | 80269 | Grower washer ∅ 8 |

X-PRO D60 V2 spraying machine - High-pressure washer - Water meter (options)

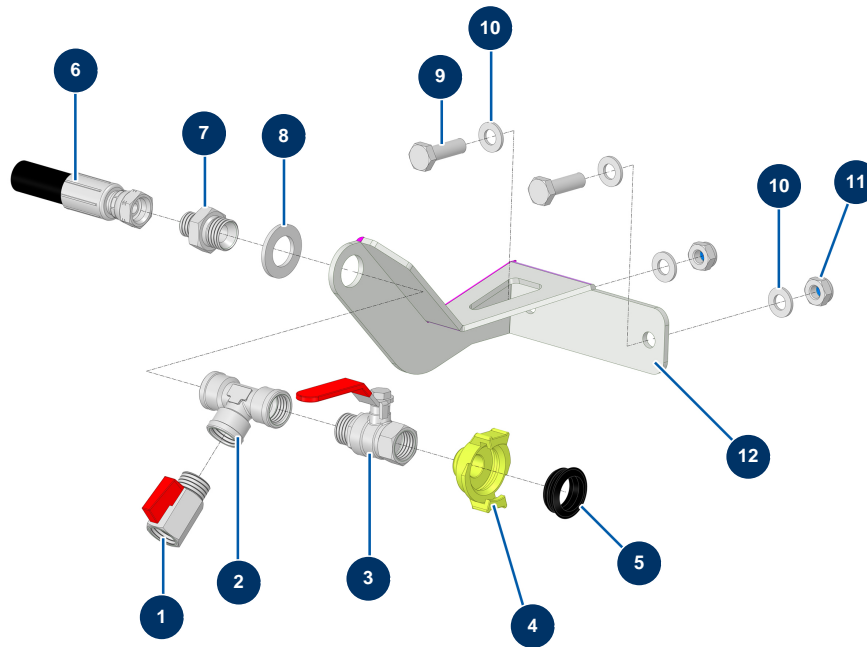


Détails des pièces

| Pos. | Référence | Désignation |
|------|-----------|--|
| 1 | 90352 | Pump 11 litres 140 bar - C.P 60 |
| 2 | 13101 | 1/4" thermostatic valve |
| 3 | 12406 | Washer 6 cc single-direction hydraulic motor - CP 60 |
| 4 | 15271 | |
| 5 | 15272 | |
| 6 | 90698 | 3/8" MaleD x 3/8" MaleD high-pressure nipple |
| 7 | 91031 | Steel gasket for hollow screw with 3/8 lip |
| 8 | 12522 | 10 x 40 cylindrical head screw |
| 9 | 80270 | Grower washer ø 10 |
| 10 | C23208CST | 10 |
| 11 | 30292 | ø 8 inox large washer |
| 12 | 30273 | THEF 8 x 20 screw |
| 13 | 15273 | |

| Pos. | Référence | Désignation |
|------|--------------|--|
| 14 | 11891 | 1/2" MaleD x 3/4" MaleD low-pressure nipple |
| 15 | MI3G00509002 | 90° galvanised elbow 1/2" FemaleC x 1/2" FemaleC |
| 16 | 15328 | Flowmeter electrovalve 12VDC G1/2 |
| 17 | 14980 | 3/4" MaleD x 1/2" FemaleD low-pressure reduction |
| 18 | 11618 | 3/4" red fiber flat gasket |
| 19 | 15015 | |
| 20 | 90483 | Elbow BP 90° 1/2 MaleC x 1/2 FemaleD |
| 21 | 12064 | X BP 4 x 1/2"Female |
| 22 | 30119 | 1/2" MaleC x 1/4" FemaleD low-pressure reduction |
| 23 | 15089 | |
| 24 | 15274 | |
| 25 | 90336 | L M22-150 M x 3/8 F male quick fit attachment |
| 26 | 90326 | M22-150 x 1/4 F female C quick fit attachment |
| 27 | 90842 | 1/4" high-pressure MaleC plug |
| 28 | 15270 | |
| 29 | 90012 | Red handle valve M3/4" x F3/4" |
| 30 | 80128 | Filter for 3/4" brass quick connector |
| 31 | 80124 | Inner threaded 3/4" quick connector |

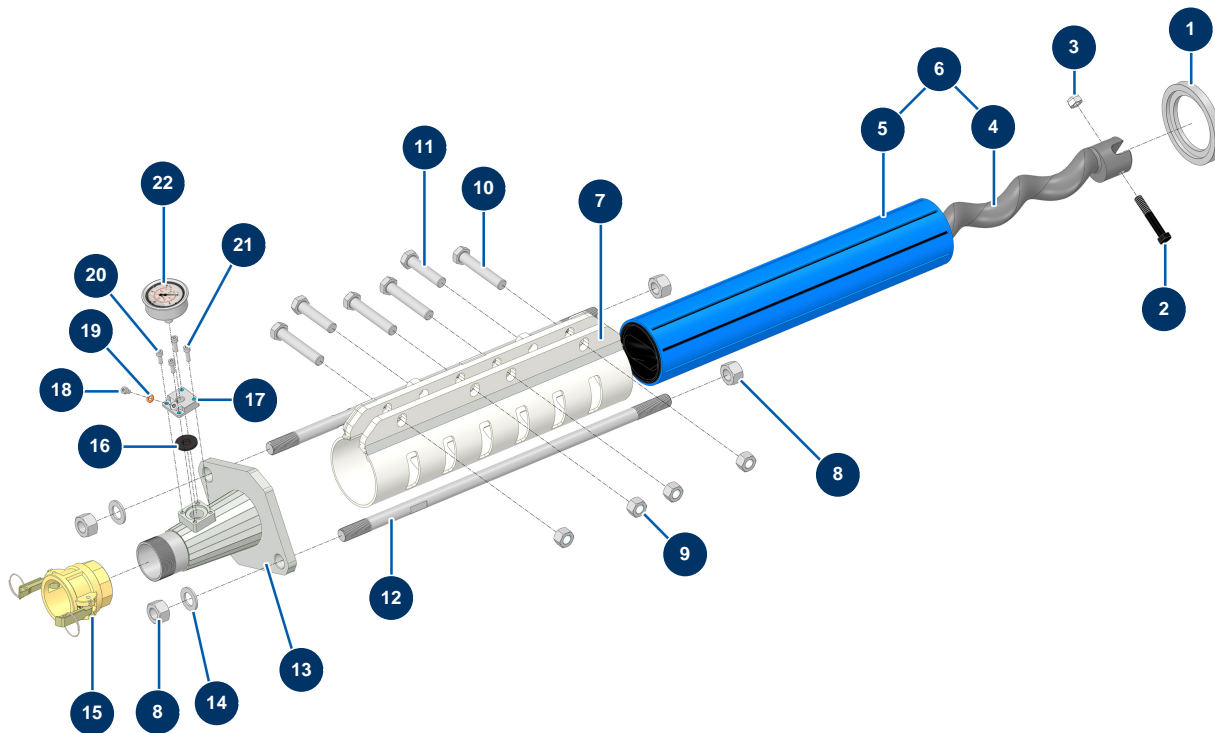
X-PRO D60 V2 spraying machine - Air outlet plate



Détails des pièces

| Pos. | Référence | Désignation |
|------|--------------|--|
| 1 | 30137 | 1/2" mini lux valve |
| 2 | 12105 | F1/2" x F1/2" x F1/2" low pressure T |
| 3 | 90023 | Red handle valve M1/2" x F1/2" |
| 4 | MI3A00100302 | 1/2" outer threaded Geka coupling |
| 5 | MI3A00100502 | Domed rubber gasket for Geka coupling |
| 6 | 15389 | |
| 7 | 90872 | 1/2" MaleD x 3/8" MaleD high-pressure nipple |
| 8 | 10141 | ø 20 inox narrow washer |
| 9 | 12934 | THEF 10 x 35 screw |
| 10 | 30280 | ø 10 inox narrow washer |
| 11 | 60013 | M 10 nylstop nut |
| 12 | C22309 | 12 |

X-PRO D60 V2 spraying machine - Pump

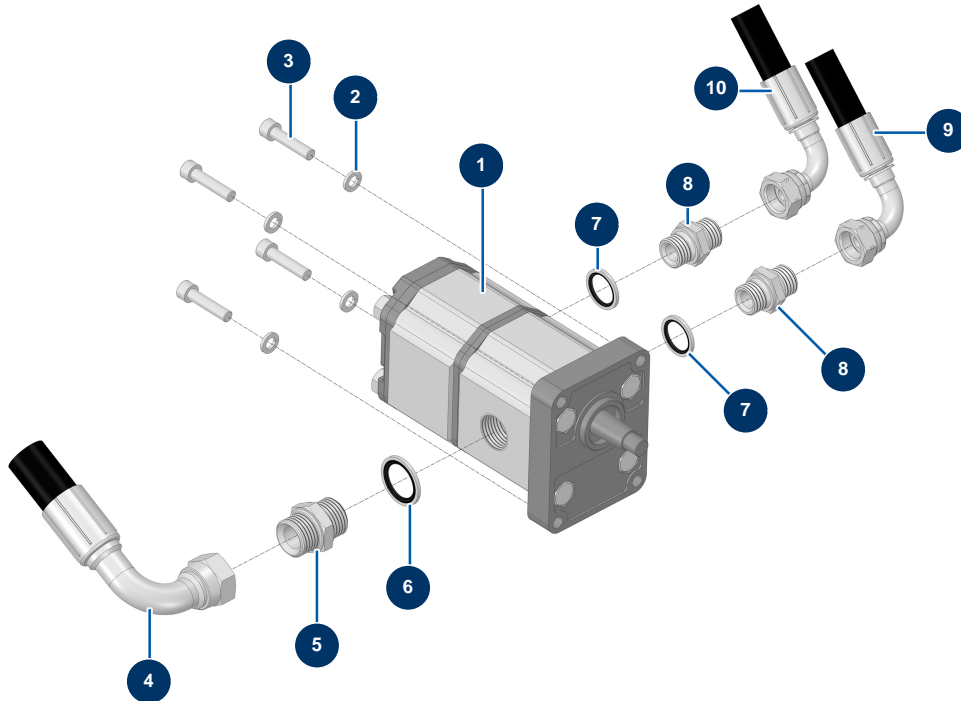


Détails des pièces

| Pos. | Référence | Désignation |
|------|--------------|--|
| 1 | M10361 | CP60 stator centring ring |
| 2 | 12520 | 12 x 70 THPF screw, black 10.9 |
| 3 | 10051 | M 12 nylstop nut |
| 4 | MI7009008800 | EUROPRO JUMBO pump rotor |
| 5 | MI3F00503800 | EUROPRO JUMBO SX 8 slits pump stator |
| 6 | 30905 | EUROPRO MAP 11 JUMBO pump rotor/stator kit |
| 7 | C20766 | MAP10 clamping jacket - CP60 V17 |
| 8 | 12473 | M 20 nut |
| 9 | 80066 | M 16 nut |
| 10 | 12472 | THEF 16 x 90 screw |
| 11 | 12872 | THEF 16 x 70 screw |
| 12 | M10281 | 595 mm fastening tie rod for CP 60 |
| 13 | C20500 | Pump head clamp for 2L6 stator - C.P 60 |

| Pos. | Référence | Désignation |
|------|--------------|--|
| 14 | 10141 | ø 20 inox narrow washer |
| 15 | 12364 | 2" camlock steel coupling, inner threaded 2" - CP 60 |
| 16 | MI4920006000 | Membrane |
| 17 | M10079 | MIXPRO 14 cage cover |
| 18 | 12625 | 6 x 8 cylindrical head screw |
| 19 | 12765 | Copper seal for JETPRO 80 pump nose |
| 20 | 90157 | M6 x 16 cylindrical head screw - CP 60 |
| 21 | 90996 | 6 x 20 inox cylindrical head screw |
| 22 | 80070 | Axial manometer 1/4" conical oil 50 mm 0 to 60 bar |

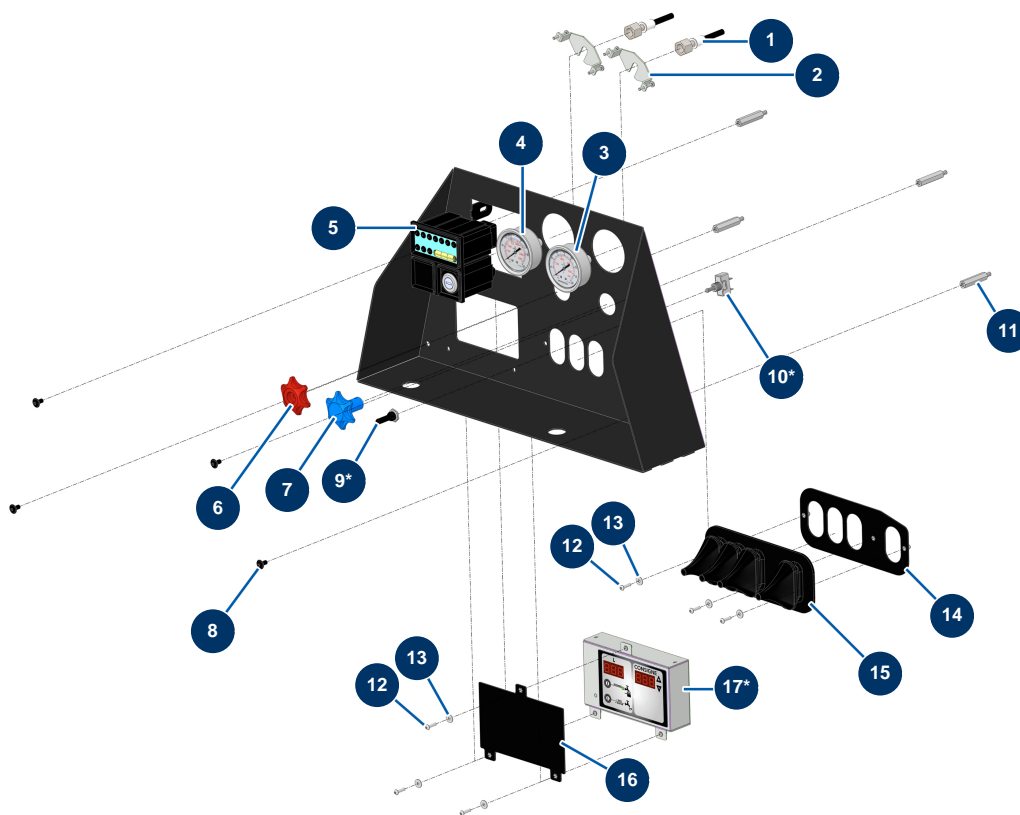
X-PRO D60 V2 spraying machine - Hydraulic pump



Détails des pièces

| Pos. | Référence | Désignation |
|------|-----------|--|
| 1 | 12405 | Double hydraulic pump 14 + 8 cc - C.P 60 |
| 2 | 80269 | Grower washer \varnothing 8 |
| 3 | 90150 | 8 x 35 cylindrical head screw |
| 4 | 15391 | |
| 5 | 90774 | 3/4" MaleD x 3/4" MaleD high-pressure nipple |
| 6 | 12573 | Steel gasket for 3/4" hollow screw with lip |
| 7 | 91032 | Steel gasket for hollow screw with 1/2" lip |
| 8 | 90627 | 1/2" MaleD x 1/2" MaleD high-pressure nipple |
| 9 | 15263 | |
| 10 | 15394 | |

X-PRO D60 V2 spraying machine - Control panel



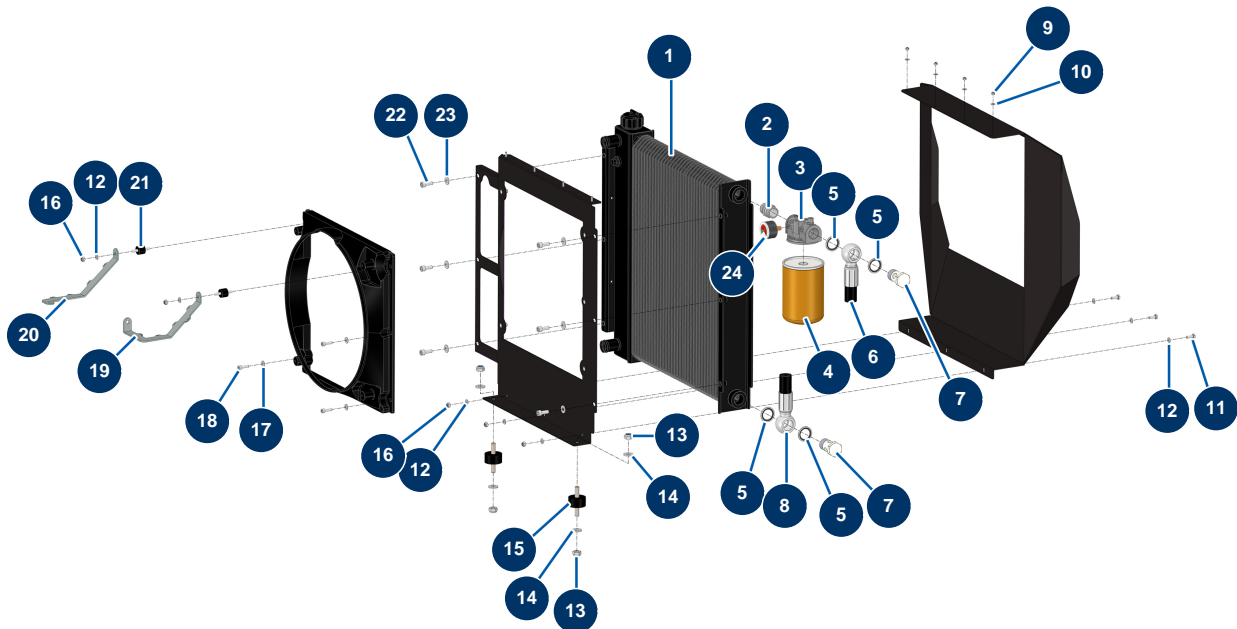
*Uniquement avec les options compteur d'eau et accélérateur automatique. / Only with water meter and automatic accelerator options.

Détails des pièces

| Pos. | Référence | Désignation |
|------|-----------|---|
| 1 | 13027 | Manometer hose 400 mm 1/4"F (mano) x 1 banjo Ø 14 mm - C.P 60 |
| 2 | 80195 | Fixing U-blot for manometer Ø 63 |
| 3 | 12342 | Cylindrical 1/4" axial manometer 63 mm 0 to 160 bar - C.P 60 |
| 4 | 13207 | Cylindrical 1/4 axial manometer 63 mm 0 to 250 bar - C.P 60 |
| 5 | 30882 | CP 60 petrol engine command panel |
| 6 | M10794 | Compensated flow limiter handle 30L/min |
| 7 | M10941 | |
| 8 | 15497 | |
| 9* | 90748 | Compressor switch waterproof cap |
| 10* | 90747 | ON/OFF unipolar switch |
| 11 | 15511 | Male/Female Spacer M6 x 45 |
| 12 | 11721 | 4 x 16 inox cylindrical pan head screw |
| 13 | 90129 | ø 4 inox large washer |

| Pos. | Référence | Désignation |
|------|-----------|---|
| 14 | C23762 | 14 |
| 15 | 13114 | 4-lever distributor protective diaphragm - C.P 60 |
| 16 | C24056 | 16 |
| 17* | 15326 | |

X-PRO D60 V2 spraying machine - Radiator

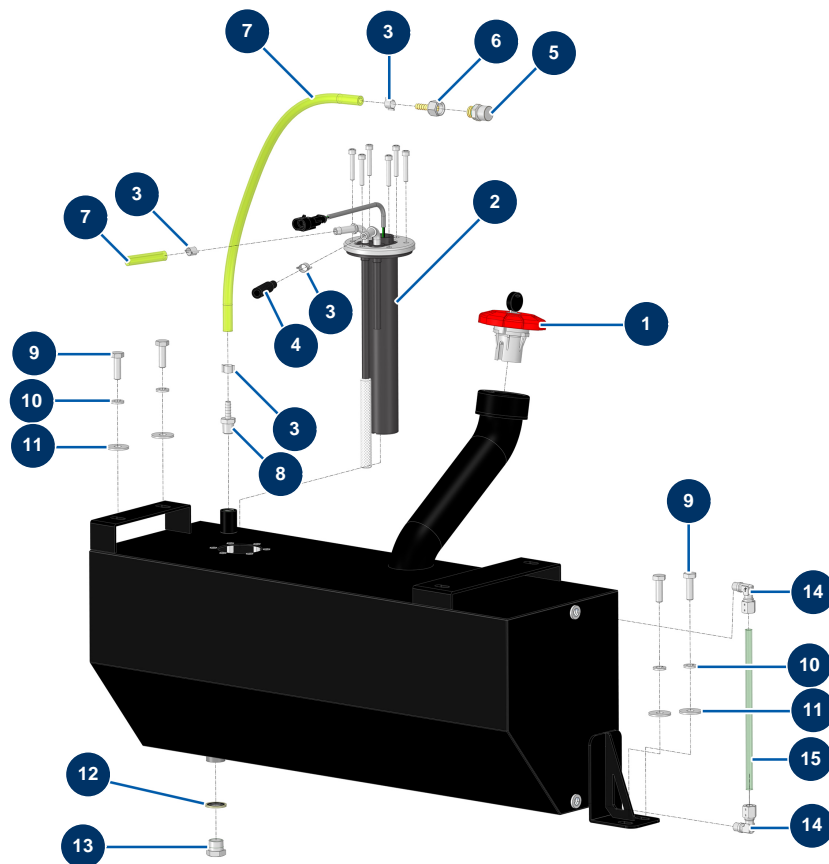


Détails des pièces

| Pos. | Référence | Désignation |
|------|-----------|---|
| 1 | 14680 | Engine/Hydraulic oil cooler RL 2021 - CP 60 |
| 2 | 90234 | 3/4" MaleC x 3/4" MaleC low-pressure nipple |
| 3 | 15305 | |
| 4 | 15307 | |
| 5 | 12573 | Steel gasket for 3/4" hollow screw with lip |
| 6 | 15269 | |
| 7 | 14733 | 3/4 BP drilled head screw |
| 8 | 15264 | |
| 9 | 30266 | M 4 nylstop nut |
| 10 | 11736 | ø 4 inox medium washer |
| 11 | 12069 | THEF 6 x 16 screw |
| 12 | 70087 | ø 6 inox narrow washer |
| 13 | 60013 | M 10 nylstop nut |

| Pos. | Référence | Désignation |
|------|-----------|--|
| 14 | 80261 | ∅ 10 inox medium washer |
| 15 | 30150 | Silentbloc ∅ 40 x 20 M10 |
| 16 | 14217 | M 6 nylstop inox nut |
| 17 | 80259 | ∅ 6 medium washer |
| 18 | 90996 | 6 x 20 inox cylindrical head screw |
| 19 | C23057 | |
| 20 | C23059 | |
| 21 | 30147 | Silentbloc ∅ 20 x 15 M6 for Compact-pro 30 |
| 22 | 80470 | 8 x 20 cylindrical head screw |
| 23 | 80260 | ∅ 8 inox medium washer |
| 24 | 15306 | |

X-PRO D60 V2 spraying machine - Fuel tank

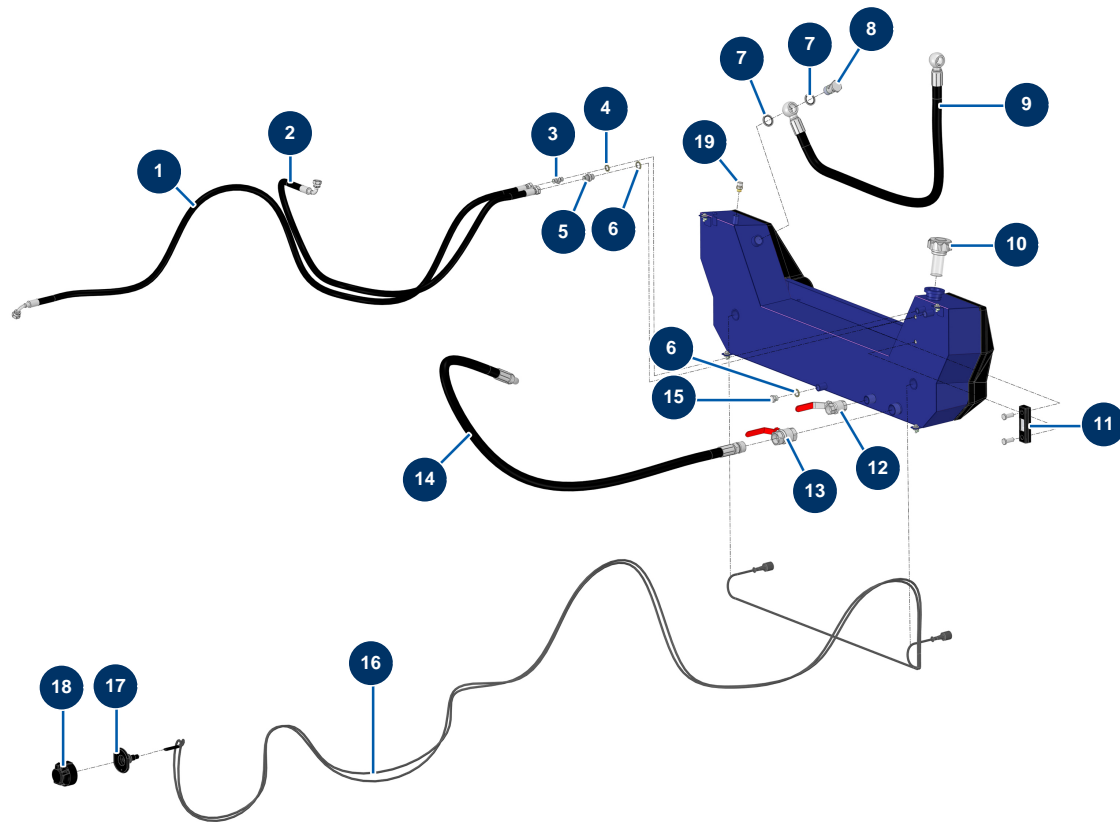


Détails des pièces

| Pos. | Référence | Désignation |
|------|-----------|---|
| 1 | 13107 | Red diesel tank cap with key - C.P 60 |
| 2 | 12989 | Gasoil level gauge - length 250 mm - CP60 |
| 3 | 60031 | Ear clamp 11 x 13 |
| 4 | 12391 | Gasoil supply hose Ø 7,5 mm (sold by the metre) |
| 5 | 12504 | |
| 6 | 70064 | Rotating connector 1/4" corrugated Ø 6 |
| 7 | 12390 | Gasoil return hose Ø 6 mm (sold by the metre) |
| 8 | 10217 | 8 |
| 9 | 11544 | THEF 8 x 25 screw |
| 10 | 80269 | Grower washer ø 8 |
| 11 | 30292 | ø 8 inox large washer |
| 12 | 91031 | Steel gasket for hollow screw with 3/8 lip |
| 13 | 90238 | 3/8" low-pressure male plug |

| Pos. | Référence | Désignation |
|------|-----------|--|
| 14 | 14708 | M1/8 ø 8 elbow screw push-in connector |
| 15 | 15570 | 15 |

X-PRO D60 V2 spraying machine - Hydraulic tank

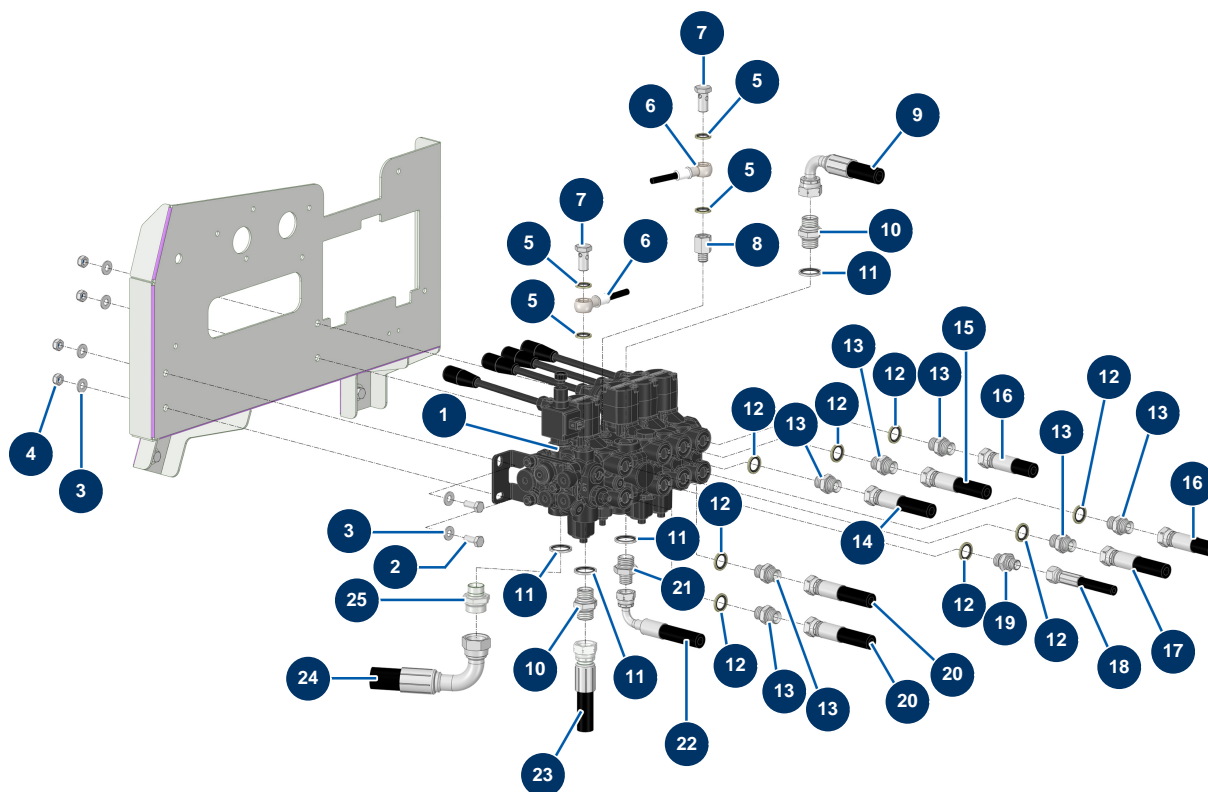


Détails des pièces

| Pos. | Référence | Désignation |
|------|-----------|---|
| 1 | 15390 | |
| 2 | 15393 | |
| 3 | 90703 | 1/4" MaleD x 1/4" MaleD high-pressure nipple |
| 4 | 91016 | Steel gasket for hollow screw with 1/4 lip |
| 5 | 90698 | 3/8" MaleD x 3/8" MaleD high-pressure nipple |
| 6 | 91031 | Steel gasket for hollow screw with 3/8 lip |
| 7 | 12573 | Steel gasket for 3/4" hollow screw with lip |
| 8 | 14733 | 3/4 BP drilled head screw |
| 9 | 15269 | |
| 10 | 15321 | |
| 11 | 12326 | Visual level of hydraulic tank - CP 60 |
| 12 | 11382 | Red handle valve F3/4" x F3/4" |
| 13 | 70031 | Drain valve for EUROPRO 4-6-8-14 P, MPE, AG, 7000z, 9000z |

| Pos. | Référence | Désignation |
|------|-----------|--|
| 14 | 15391 | |
| 15 | 90238 | 3/8" low-pressure male plug |
| 16 | 12801 | Complete lighting wiring harness 3.5 m - C.P 60 |
| 17 | 13283 | Lighting metal 7-pin female socket foam rubber gasket - C.P 60 |
| 18 | 13282 | Lighting metal 7-pin female socket - C.P 60 |
| 19 | 12504 | |

X-PRO D60 V2 spraying machine - Hydraulic control block support

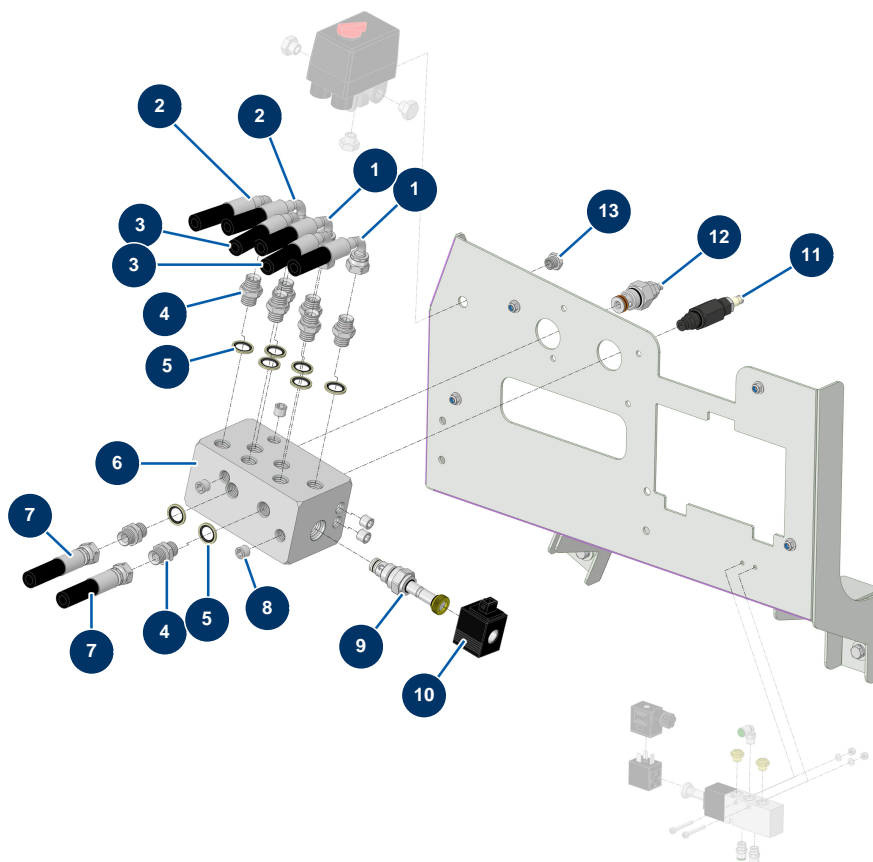


Détails des pièces

| Pos. | Référence | Désignation |
|------|-----------|---|
| 1 | 12332 | 5-way distributor with LP and integrated hopper Bypass - C.P 60 |
| 2 | 30273 | THEF 8 x 20 screw |
| 3 | 80260 | ø 8 inox medium washer |
| 4 | 13980 | M 8 nylstop inox nut |
| 5 | 91016 | Steel gasket for hollow screw with 1/4 lip |
| 6 | 13027 | Manometer hose 400 mm 1/4"F (mano) x 1 banjo Ø 14 mm - C.P 60 |
| 7 | 90863 | 1/4 drilled head screw |
| 8 | 12667 | 1/4" MaleC x 1/4" FemaleD high-pressure nipple |
| 9 | 15394 | |
| 10 | 90627 | 1/2" MaleD x 1/2" MaleD high-pressure nipple |
| 11 | 91032 | Steel gasket for hollow screw with 1/2" lip |
| 12 | 91031 | Steel gasket for hollow screw with 3/8 lip |
| 13 | 90698 | 3/8" MaleD x 3/8" MaleD high-pressure nipple |

| Pos. | Référence | Désignation |
|------|-----------|--|
| 14 | 15392 | |
| 15 | 15272 | |
| 16 | 15385 | |
| 17 | 15271 | |
| 18 | 15386 | |
| 19 | 90704 | 1/4" MaleD x 3/8" MaleD high-pressure nipple |
| 20 | 15262 | |
| 21 | 80338 | 3/8" MaleC x 1/2" MaleD high-pressure nipple |
| 22 | 15393 | |
| 23 | 15263 | |
| 24 | 15264 | |
| 25 | 12733 | 1/2" MaleD x 3/4" MaleD high-pressure nipple |

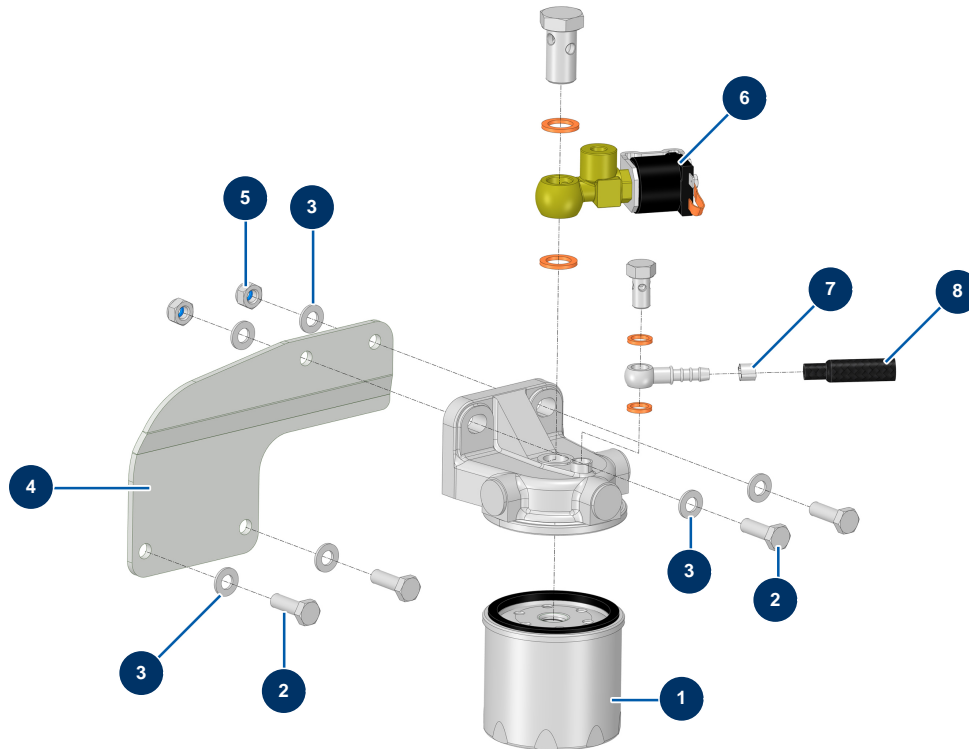
X-PRO D60 V2 spraying machine - Hydraulic block support



Détails des pièces

| Pos. | Référence | Désignation |
|------|-----------|--|
| 1 | 15385 | |
| 2 | 15388 | |
| 3 | 15387 | |
| 4 | 90698 | 3/8" MaleD x 3/8" MaleD high-pressure nipple |
| 5 | 91031 | Steel gasket for hollow screw with 3/8 lip |
| 6 | M10404 | Speed regulator hydraulic block - CP 60 |
| 7 | 15262 | |
| 8 | 12576 | 1/4" MaleC Male high-pressure headless plug |
| 9 | 12912 | 12V bypass valve - CP 60 |
| 10 | 13316 | 12V coil by-pass valve in cartridge - C.P 60 |
| 11 | 14969 | Hopper cartridge 30L/min equalised flow limiter |
| 12 | 13016 | Mixer cartridge 45L/min single flow limiter - C.P 60 |
| 13 | 90240 | 1/4" MaleC x 1/8" FemaleD low-pressure reduction |

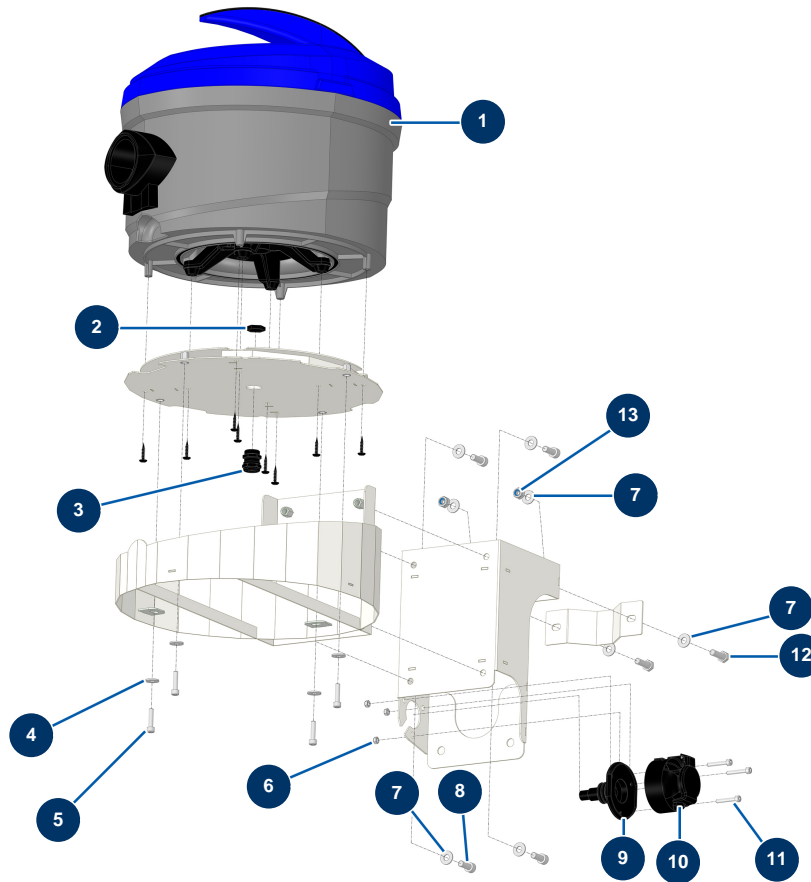
X-PRO D60 V2 spraying machine - Diesel filter support



Détails des pièces

| Pos. | Référence | Désignation |
|------|-----------|--|
| 1 | 80333 | 27 hp LOMBARDINI motor diesel filter |
| 2 | 11544 | THEF 8 x 25 screw |
| 3 | 30256 | ø 8 inox narrow washer |
| 4 | C23980 | 4 |
| 5 | 13980 | M 8 nylstop inox nut |
| 6 | 30769 | LOMBARDINI 27 hp diesel filter solenoid valve - C.P 60 |
| 7 | 60031 | Ear clamp 11 x 13 |
| 8 | 12391 | Gasoil supply hose Ø 7,5 mm (sold by the metre) |

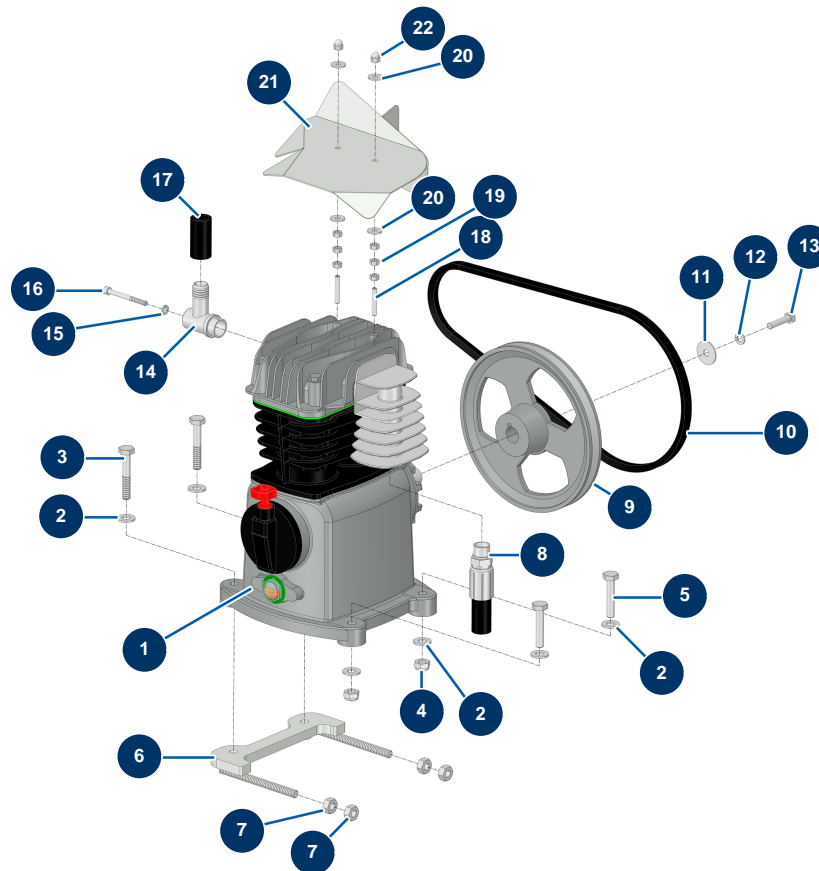
X-PRO D60 V2 spraying machine - Dust vacuum system (option)



Détails des pièces

| Pos. | Référence | Désignation |
|------|-----------|---|
| 1 | 15580 | 1 |
| 2 | 11197 | M 20 cable gland nut |
| 3 | 80448 | M 20 waterproof cable gland |
| 4 | 30291 | ø 6 large washer |
| 5 | 80614 | 6 x 25 inox cylindrical head screw |
| 6 | 11880 | M 5 nylstop nut |
| 7 | 80260 | ø 8 inox medium washer |
| 8 | 80470 | 8 x 20 cylindrical head screw |
| 9 | 15591 | Lighting metal 7-pin female socket - C.P 60 |
| 10 | 15509 | |
| 11 | 12245 | 5 x 30 cylindrical head screw |
| 12 | 11544 | THEF 8 x 25 screw |
| 13 | 90127 | M 8 nylstop nut |

X-PRO D60 V2 spraying machine - Compression head

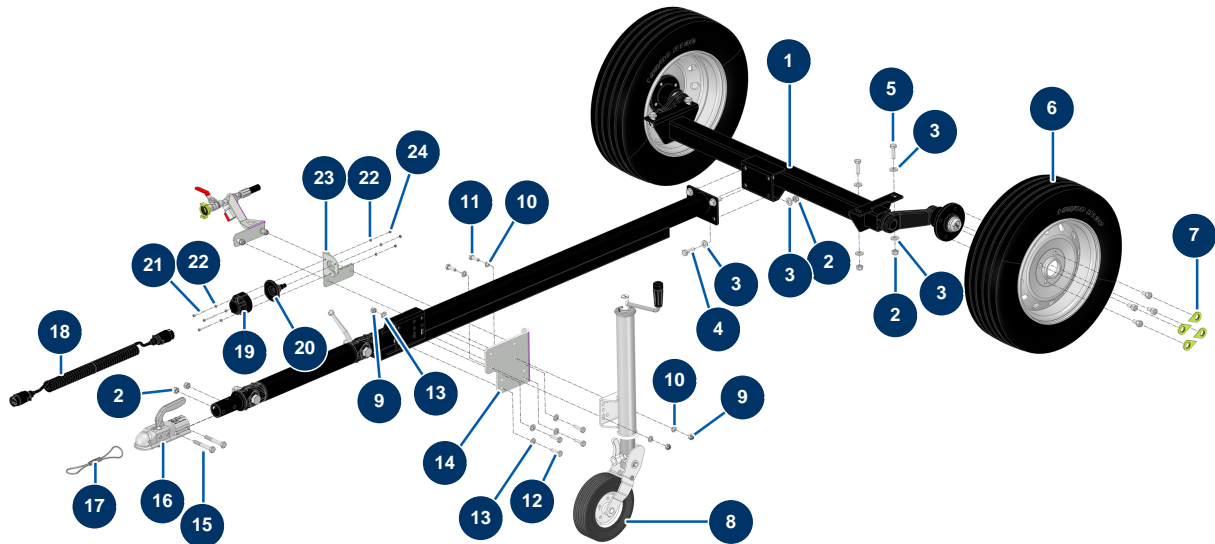


Détails des pièces

| Pos. | Référence | Désignation |
|------|-----------|--|
| 1 | 12653 | KDT3.100/6-29MTKW5,5/6,6 IE2 BE compression head |
| 2 | 80261 | ø 10 inox medium washer |
| 3 | 12770 | 10 x 60 THPF screw |
| 4 | 60013 | M 10 nylstop nut |
| 5 | 30260 | THEF 10 x 50 screw |
| 6 | C23772 | 6 |
| 7 | 90453 | M 10 nut |
| 8 | 15268 | |
| 9 | 21482 | 9 |
| 10 | 12478 | Compressor belt - C.P 60 |
| 11 | 80263 | Very large inox washer Ø 8 |
| 12 | 80269 | Grower washer ø 8 |
| 13 | 11545 | THEF 8 x 35 inox screw |

| Pos. | Référence | Désignation |
|------|-----------|--|
| 14 | C20569 | Compressor air inlet elbow - C.P 60 |
| 15 | 80268 | Grower washer Ø 6 - C.P 60 |
| 16 | 12764 | 6 x 60 cylindrical head screw |
| 17 | 10727 | |
| 18 | 15228 | 6 x 35 socket head screw with flat tip |
| 19 | 10038 | M 6 nut |
| 20 | 30291 | ø 6 large washer |
| 21 | C20813 | Compressor air baffle - C.P 60 |
| 22 | 30330 | M 6 Inox cap nut |

X-PRO D60 V2 spraying machine - Steering gear

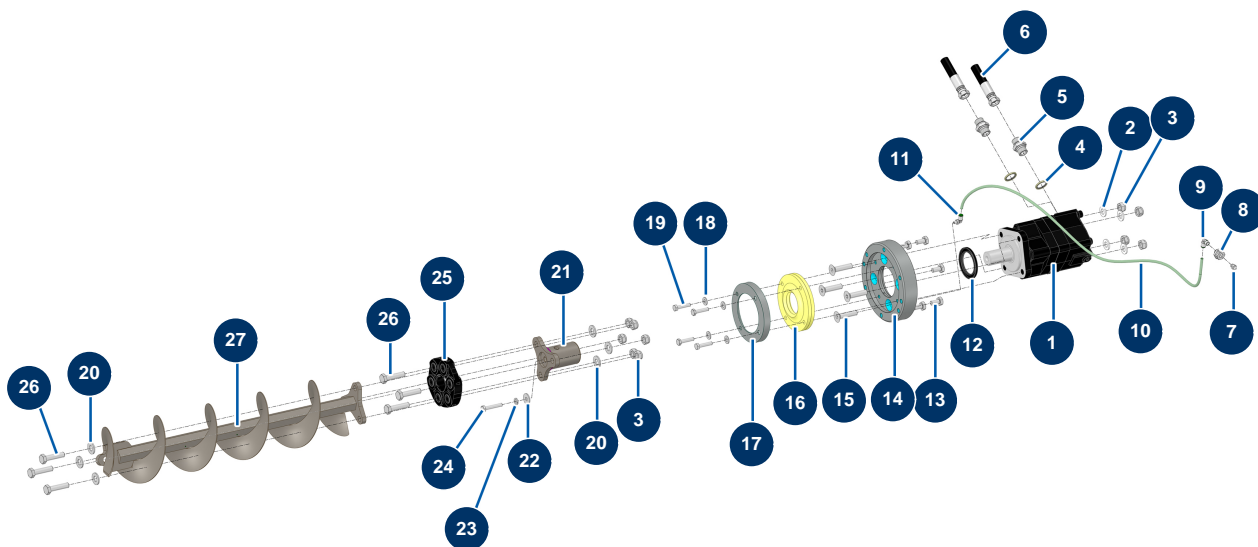


Détails des pièces

| Pos. | Référence | Désignation |
|------|-----------|---|
| 1 | 15249 | 1 |
| 2 | 10051 | M 12 nylstop nut |
| 3 | 14102 | ø 12 inox medium washer |
| 4 | K000211 | |
| 5 | 12928 | THEF 12 x 40 screw |
| 6 | 20211 | Complete wheel 155/80R13 PCD 98x4 X-PRO D140 |
| 7 | 14645 | |
| 8 | 14891 | Automatic jockey wheel 500 Kg X-RO D60/80 & E70 |
| 9 | 60013 | M 10 nylstop nut |
| 10 | 30280 | ø 10 inox narrow washer |
| 11 | 30258 | THEF 10 x 30 screw |
| 12 | 12934 | THEF 10 x 35 screw |
| 13 | 80261 | ø 10 inox medium washer |

| Pos. | Référence | Désignation |
|------|-----------|--|
| 14 | C20368 | Jockey wheel raiser - C.P 60 |
| 15 | 12442 | 12 x 80 THPF screw |
| 16 | 15503 | |
| 17 | 14326 | Headstock safety cable AK160 ø 50 nut PA - CP 60 |
| 18 | 13284 | 7-pin metal male sockets 2.5 m x 2 spiral extender - C.P 60 |
| 19 | 13282 | Lighting metal 7-pin female socket - C.P 60 |
| 20 | 13283 | Lighting metal 7-pin female socket foam rubber gasket - C.P 60 |
| 21 | 11881 | Sander head screw M5 x 40 |
| 22 | 70085 | ø 5 narrow washer |
| 23 | C21078 | 23 |
| 24 | 11880 | M 5 nylstop nut |

X-PRO D60 V2 spraying machine - Transmission

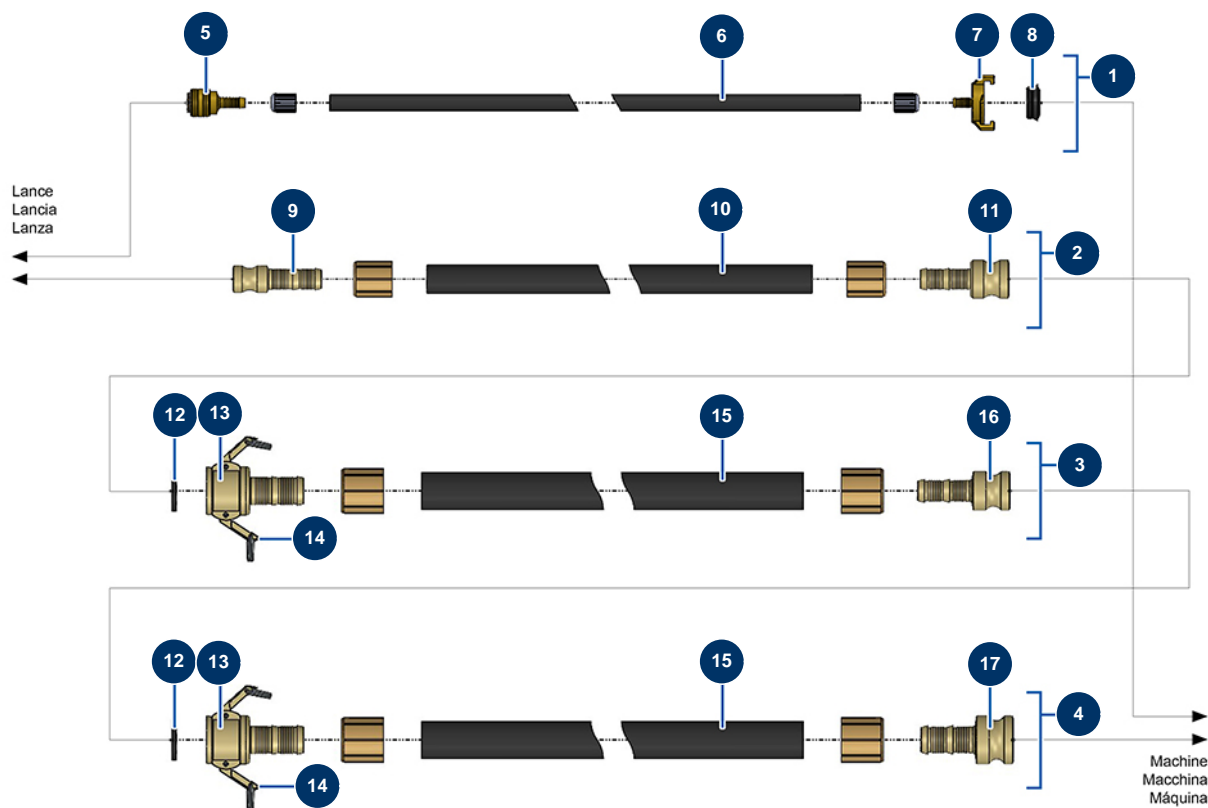


Détails des pièces

| Pos. | Référence | Désignation |
|------|-----------|---|
| 1 | 13546 | Hydraulic motor BMS 160 hopper - CP 60 |
| 2 | 30281 | ø 12 inox narrow washer |
| 3 | 10051 | M 12 nylstop nut |
| 4 | 91032 | Steel gasket for hollow screw with 1/2" lip |
| 5 | 90627 | 1/2" MaleD x 1/2" MaleD high-pressure nipple |
| 6 | 15387 | |
| 7 | 20044 | 1/8" M straight lubricator |
| 8 | 20159 | |
| 9 | 30124 | Corrugated Legris coupling M1/8" Ø 6 |
| 10 | 30403 | Calibrated polyurethane tube ø 4 x 6 black by the metre |
| 11 | 15459 | |
| 12 | 12825 | Spi seal 50 x 72 x 6 - C.P 60 |
| 13 | 12446 | THEF 10 x 20 screw |

| Pos. | Référence | Désignation |
|------|-----------|--|
| 14 | M10888 | |
| 15 | 12805 | 12 x 50 countersunk head screw |
| 16 | 15300 | X-PRO machine tank bottom gasket |
| 17 | M10894 | |
| 18 | 80260 | ∅ 8 inox medium washer |
| 19 | 11545 | THEF 8 x 35 inox screw |
| 20 | 14102 | ∅ 12 inox medium washer |
| 21 | C20701 | Motor/hopper coupling - C.P 60 |
| 22 | 30292 | ∅ 8 inox large washer |
| 23 | 80269 | Grower washer ∅ 8 |
| 24 | 11798 | THEF 8 x 45 screw |
| 25 | 12484 | Transmission shaft elastic coupling - C.P 60 |
| 26 | 12467 | THEF 12 x 50 screw |
| 27 | C23760 | |

X-PRO D60 V2 spraying machine - Air and product hoses - FACADE

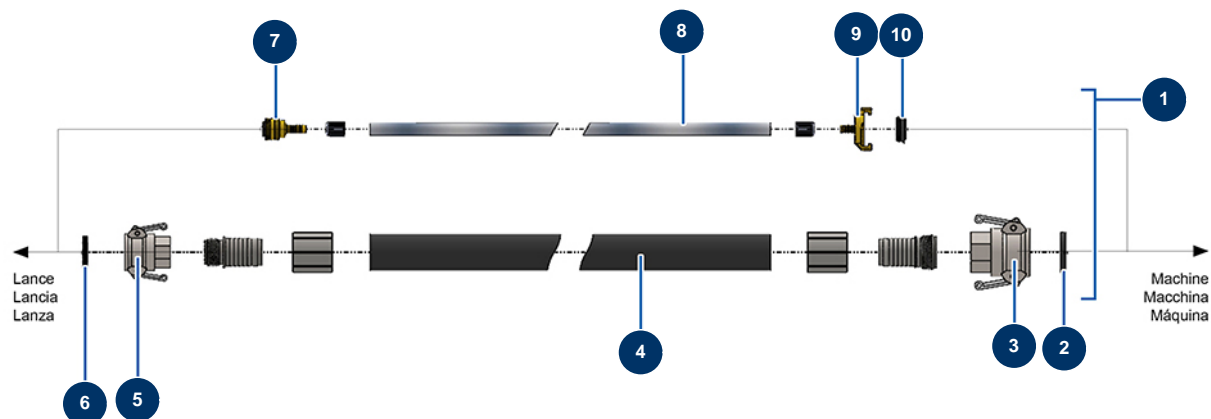


Détails des pièces

| Pos. | Référence | Désignation |
|------|--------------|---|
| 1 | 12529 | Complete air hose Ø 10 x 33 m lance - CP 60 |
| 2 | 12525 | Product hose ø 25 x 5 m with M35 x M25 couplings |
| 3 | 12524 | Product hose ø 35 x 13,3 m with M35 x F35 couplings |
| 4 | 12523 | Product hose ø 35 x 13,3 m with M50 x F35 couplings |
| 5 | 70004 | Female quick fit coupling with corrugated shank of 9 |
| 6 | 50016 | ø 10-16 rubber air hose by the metre |
| 7 | 13566 | Corrugated Geka coupling of 10 |
| 8 | MI3A00100502 | Domed rubber gasket for Geka coupling |
| 9 | 12515 | 1" steel adapter, corrugated ø 25 |
| 10 | 10268 | Spray hose 25 x 37 by the metre |
| 11 | 12517 | 1"1/4 steel adapter, corrugated ø 25 |
| 12 | 12839 | Steel cam coupler gasket of 35 - C.P 60 |
| 13 | 12514 | 1"1/4 camlock steel coupling, corrugated ø 35 - CP 60 |

| Pos. | Référence | Désignation |
|------|-----------|--------------------------------------|
| 14 | 90691 | 1"1/4 cam coupler |
| 15 | 11976 | Spray hose 35 x 49 by the metre |
| 16 | 12516 | 1"1/4 steel adapter, corrugated ø 35 |
| 17 | 12518 | 2" steel adapter, corrugated ø 35 |

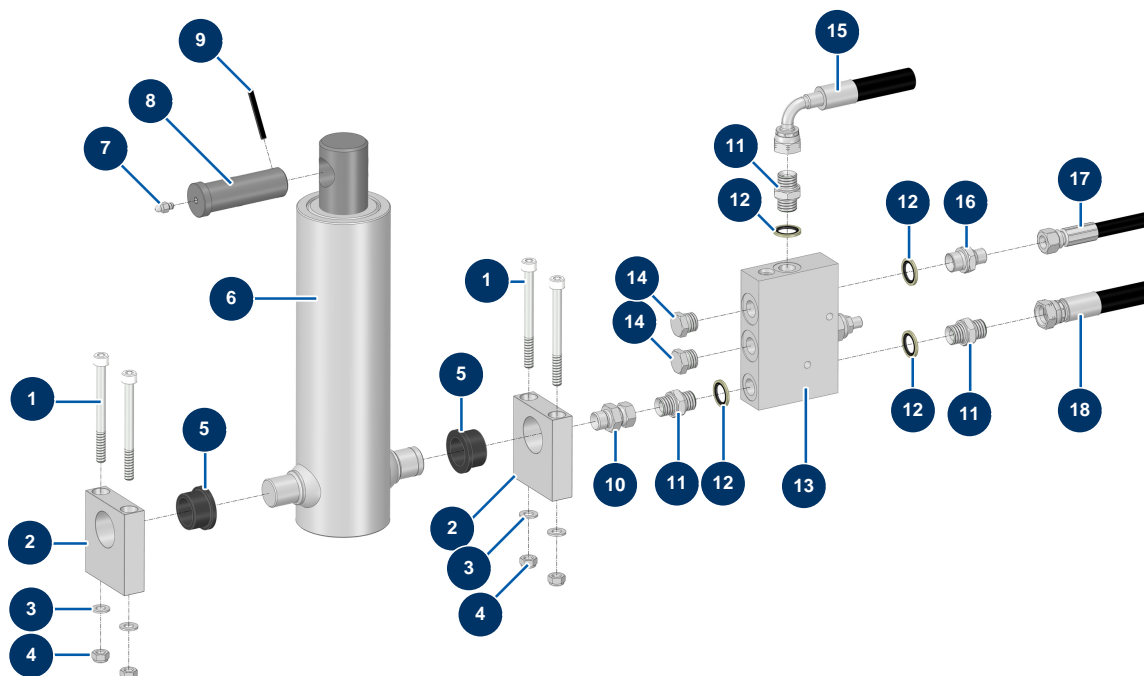
X-PRO D60 V2 spraying machine - Air and product hoses - MORTAR



Détails des pièces

| Pos. | Référence | Désignation |
|------|--------------|---|
| 1 | 13619 | ∅ 32 x 20 metres air product hose - CP 60 MORTAR |
| 2 | 70015 | 1"1/4 cam coupler gasket |
| 3 | 70006 | 1"1/4 camlock alu coupling, inner threaded 1"1/4 for 24P |
| 4 | 10269 | Spray hose 32 x 44 by the metre |
| 5 | 70007 | 1" camlock alu coupling, inner threaded 1" for 6, 8, 14 & 24P |
| 6 | 70014 | 1" cam coupler gasket |
| 7 | 70004 | Female quick fit coupling with corrugated shank of 9 |
| 8 | 50003 | Clear braided PVC hose ∅ 10 x 16 by the metre |
| 9 | 13566 | Corrugated Geka coupling of 10 |
| 10 | MI3A00100502 | Domed rubber gasket for Geka coupling |

X-PRO D60 V2 spraying machine - Mixer cylinder



Détails des pièces

| Pos. | Référence | Désignation |
|------|-----------|--|
| 1 | 14152 | 8 x 90 cylindrical head screw |
| 2 | M20015 | Hopper cylinder support CP 60 & 80 |
| 3 | 30256 | ø 8 inox narrow washer |
| 4 | 13980 | M 8 nylstop inox nut |
| 5 | 14129 | Bearing with flange 25/32 x 20 - CP 60 & 80 |
| 6 | 12307 | Mixer telescopic cylinder - C.P 60 |
| 7 | 60012 | M6 straight lubricator |
| 8 | M10251 | Cylinder axle - CP 60 |
| 9 | 12474 | Cylinder axis elastic pin - CP 60 |
| 10 | 14287 | 16/150 MaleD x 3/8" FemaleC - CP 60 high-pressure nipple |
| 11 | 90698 | 3/8" MaleD x 3/8" MaleD high-pressure nipple |
| 12 | 91031 | Steel gasket for hollow screw with 3/8 lip |
| 13 | 15028 | |

| Pos. | Référence | Désignation |
|------|-----------|--|
| 14 | 90238 | 3/8" low-pressure male plug |
| 15 | 15390 | |
| 16 | 90704 | 1/4" MaleD x 3/8" MaleD high-pressure nipple |
| 17 | 15386 | |
| 18 | 15392 | |