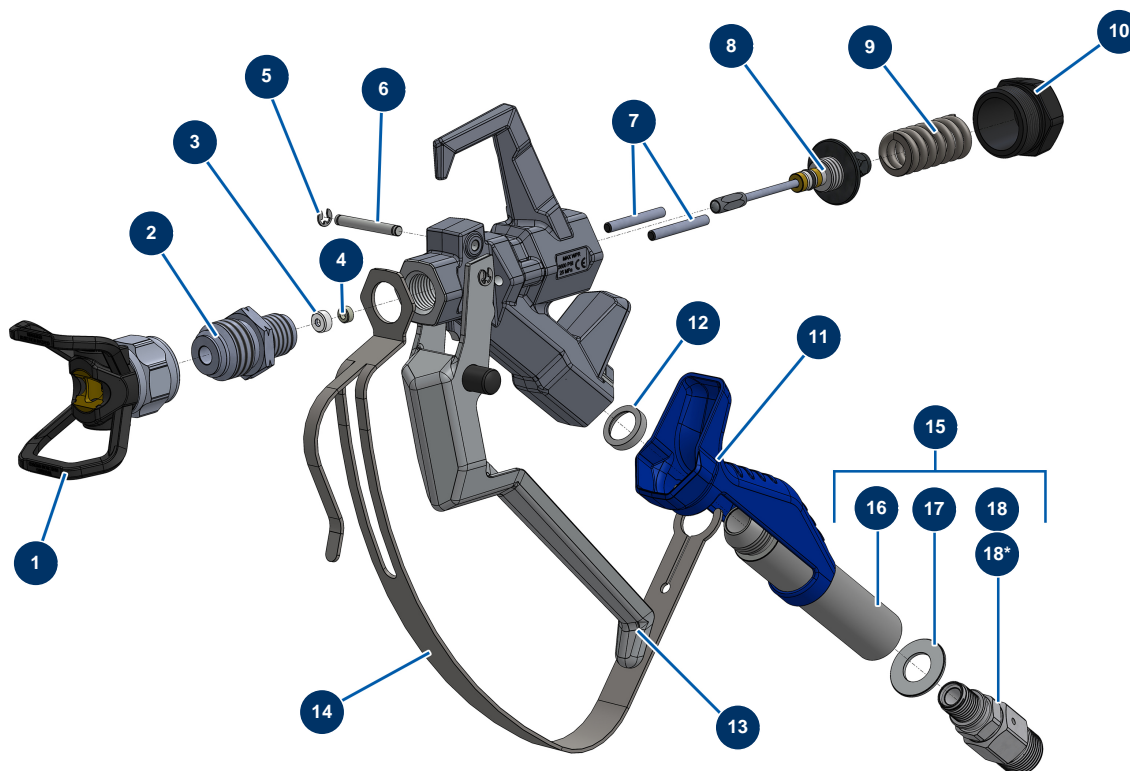


COATSPRAY spray-gun with 7/8" G tip holder - General view



**Raccord renforcé optionnel / Optional reinforced connector*

Détails des pièces

Pos.	Référence	Désignation
1	51001	BST, BBP & BFF 7/8" tip guard
2	51054	COATSPRAY spray-gun 7/8" diffuser
3	51047	PAINTSPRAY, COATSPRAY spray-gun needle seat gasket
4	51046	PAINTSPRAY, COATSPRAY spray-gun needle seat
5	51043	PAINTSPRAY, COATSPRAY spray-gun trigger axis circlip
6	51057	COATSPRAY spray-gun trigger axis
7	51055	COATSPRAY spray-gun retraction pin
8	51053	COATSPRAY spray-gun needle repair kit
9	51034	PAINTSPRAY, COATSPRAY spray-gun needle return spring
10	51038	PAINTSPRAY, COATSPRAY spray-gun needle lock plug
11	51037	PAINTSPRAY spray-gun plastic handle
12	51051	COATSPRAY spray-gun filter holder bearing gasket
13	51056	COATSPRAY spray-gun complete trigger

Pos.	Référence	Désignation
14	51052	COATSPRAY spray-gun trigger protection
15	51059	Complete revolving coupling for COATSPRAY spray-gun
16	51035	PAINTSPRAY spray-gun filter holder
17	51045	PAINTSPRAY, COATSPRAY spray-gun revolving coupling gasket
18	51058	1/2" MBSP revolving coupling for COATSPRAY spray-gun
18*	M07057	Reinforced turning connector for COATSPRAY spray-gun