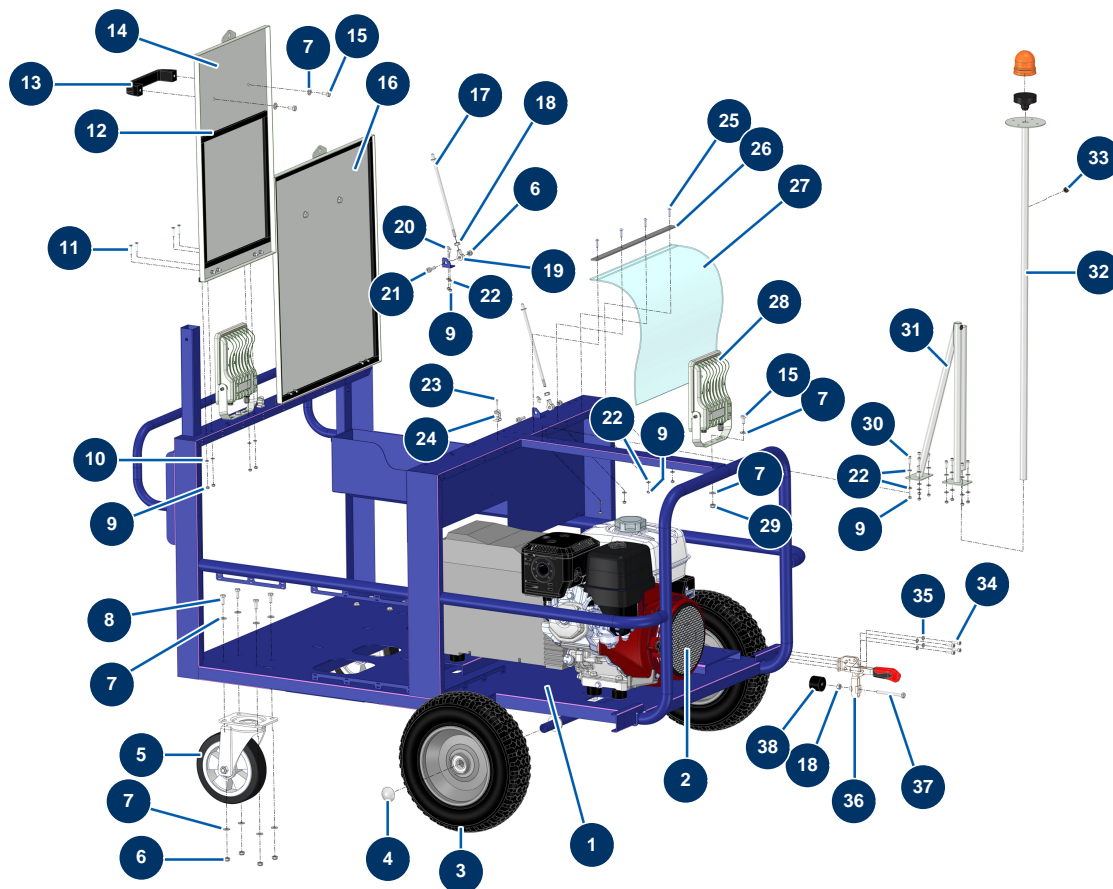


TWINMIX two-component dosing machine - Chassis

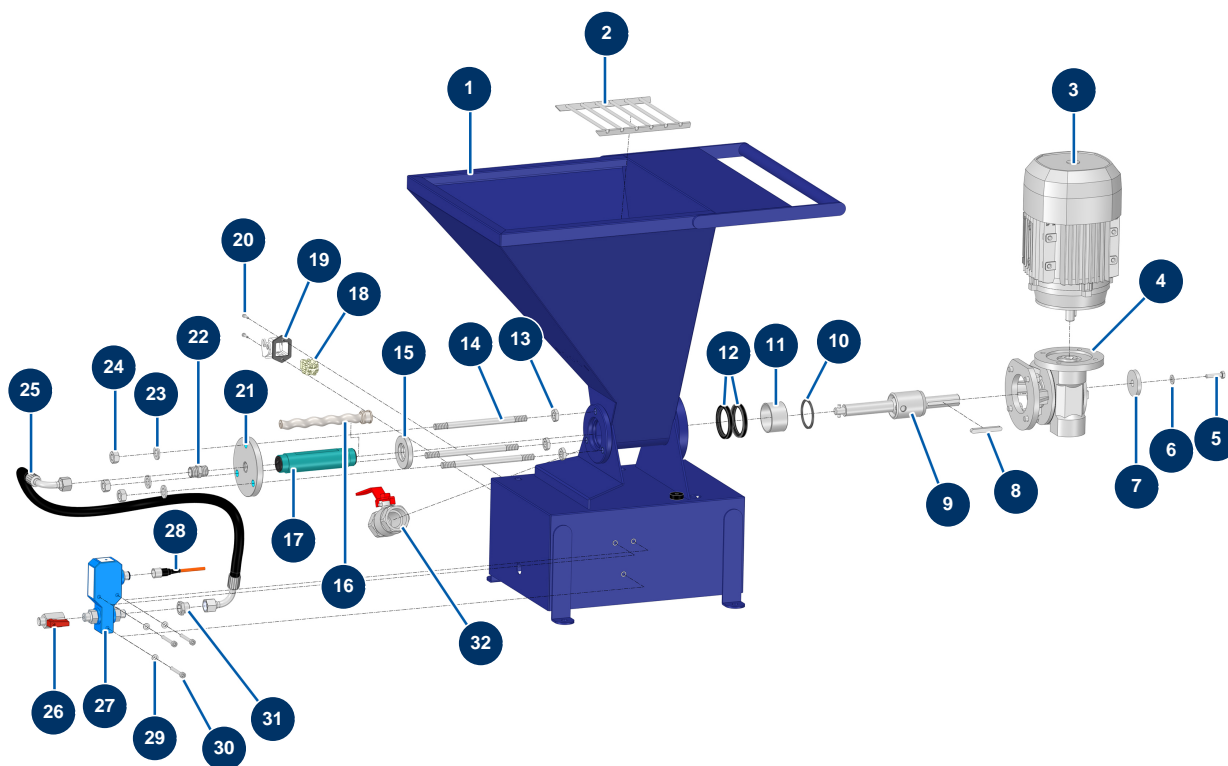


Détails des pièces

| Pos. | Référence | Désignation |
|------|--------------|---|
| 1 | C24024 | 1 |
| 2 | 14936 | Petrol motor HONDA GX 390UT2-QN-R2-0H, electric start, 18 A |
| 3 | 80351 | Complete Ø400 wheel with bearing - axle of 25 |
| 4 | 90282 | Ø25 chromed clip |
| 5 | MI3F00300902 | Pivot wheel without brake |
| 6 | 90127 | M 8 nylstop nut |
| 7 | 80260 | ø 8 inox medium washer |
| 8 | 30273 | THEF 8 x 20 screw |
| 9 | 11880 | M 5 nylstop nut |
| 10 | 70085 | ø 5 narrow washer |
| 11 | 12121 | 5 x 25 countersunk head screw |
| 12 | | 12 |
| 13 | 1042523 | CP 60 grid handle |

| Pos. | Référence | Désignation |
|------|--------------|---|
| 14 | C24031 | 14 |
| 15 | 30295 | THEF 8 x 16 screw |
| 16 | C24033 | 16 |
| 17 | C24060 | 17 |
| 18 | 14075 | M 8 inox nut |
| 19 | 13240 | |
| 20 | 15097 | 5 x 10 inox cylindrical pan head screw |
| 21 | 12783 | 8 x 25 cylindrical head screw |
| 22 | 11737 | ∅ 5 inox medium washer |
| 23 | 12232 | ∅ 3,2 x 11 POP rivet |
| 24 | 80585 | |
| 25 | 20290 | 5 x 20 10.9 cylindrical head screw |
| 26 | C24110 | 26 |
| 27 | MI4920001010 | MIXPRO 28 compressor protection plastic |
| 28 | 15341 | |
| 29 | 13980 | M 8 nylstop inox nut |
| 30 | 90160 | 5 x 16 cylindrical head screw |
| 31 | C24043 | 31 |
| 32 | | 32 |
| 33 | 13399 | ∅6 rubber grommet |
| 34 | 90996 | 6 x 20 inox cylindrical head screw |
| 35 | 70087 | ∅ 6 inox narrow washer |
| 36 | 12142 | MIXPRO 100 product trapdoor locking clamp |
| 37 | 14930 | THEF 8 x 80 screw |
| 38 | 13963 | ∅40 x 30 stop - M8 inner thread |

TWINMIX two-component dosing machine - Hardener machine

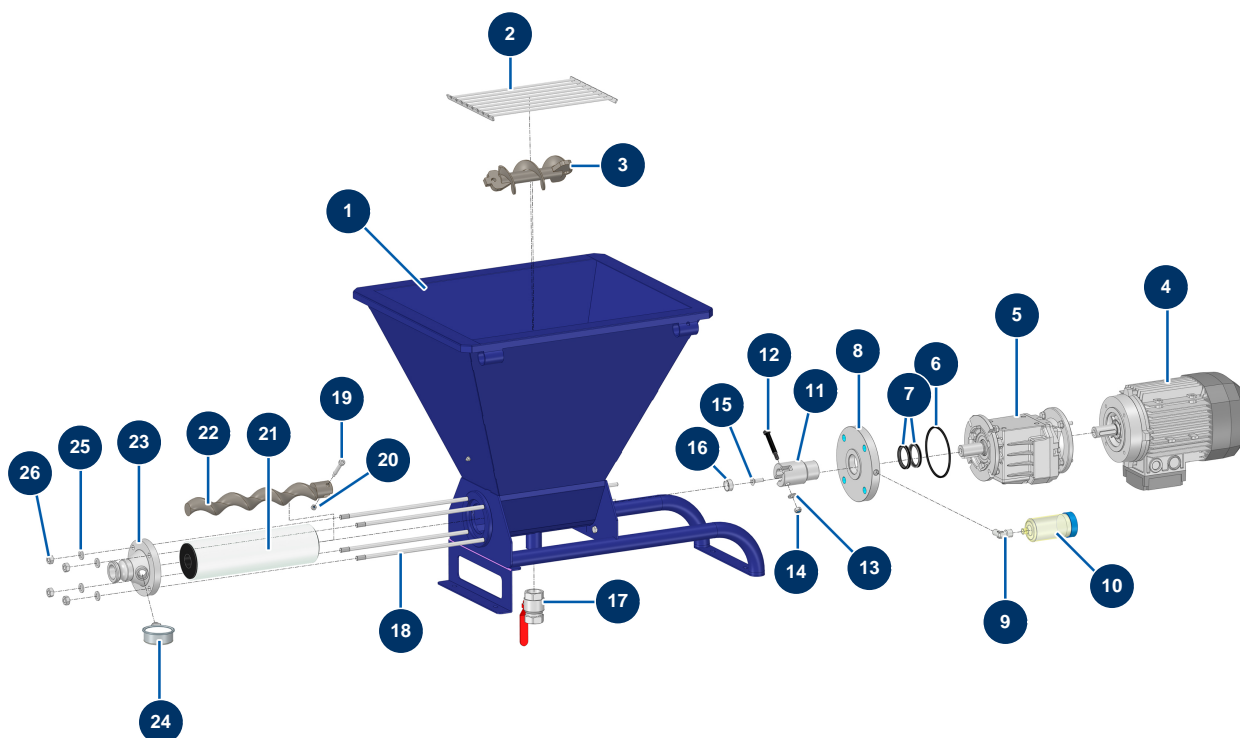


Détails des pièces

| Pos. | Référence | Désignation |
|------|-----------|--|
| 1 | C24039 | 1 |
| 2 | C24041 | 2 |
| 3 | 30008 | Electric motor 0,55 kW - T71 - B14 -1400 rpm - 400V |
| 4 | 30042 | Speed reducer 90° - T40 - R30 - B14/T71 |
| 5 | 14218 | THEF 6 x 25 inox screw |
| 6 | 80259 | Ø 6 medium washer |
| 7 | C22885 | 7 |
| 8 | 90751 | 6 x 6 x 50 parallel key with round end for 4P |
| 9 | 15329 | Drive shaft for TWINMIX 4 P |
| 10 | 30351 | EUROPRO 4 P grease cage gasket |
| 11 | 60011 | EUROPRO 4 P grease cage |
| 12 | 70062 | Spi seal 40 x 52 x 7 for 4,6,8P, AG, MPE, 7000z, 9000z |
| 13 | 13979 | M10 flat inox nut |

| Pos. | Référence | Désignation |
|------|--------------|---|
| 14 | M10914 | |
| 15 | M10916 | |
| 16 | MI7009265200 | |
| 17 | MI3F00509800 | EUROPRO MAP 12 VITON pump stator RAL9005 |
| 18 | 11914 | Female insert 4p + G |
| 19 | 11915 | Blowing machine insulating support 3 p + T - 1 lever |
| 20 | 12249 | 3 x 12 cylindrical head screw |
| 21 | M10917 | |
| 22 | 30367 | 3/8" MaleC x 3/8" MaleC low-pressure nipple |
| 23 | 30280 | ø 10 inox narrow washer |
| 24 | 13978 | M10 inox nut |
| 25 | 15383 | |
| 26 | 30135 | 1/4" mini lux valve |
| 27 | 15322 | |
| 28 | 12409 | M12 straight female connector with 2m cable |
| 29 | 70085 | ø 5 narrow washer |
| 30 | 11881 | Sander head screw M5 x 40 |
| 31 | 90242 | 3/8" MaleC x 1/4" FemaleD low-pressure reduction |
| 32 | 70031 | Drain valve for EUROPRO 4-6-8-14 P, MPE, AG, 7000z, 9000z |

TWINMIX two-component dosing machine - Paint machine

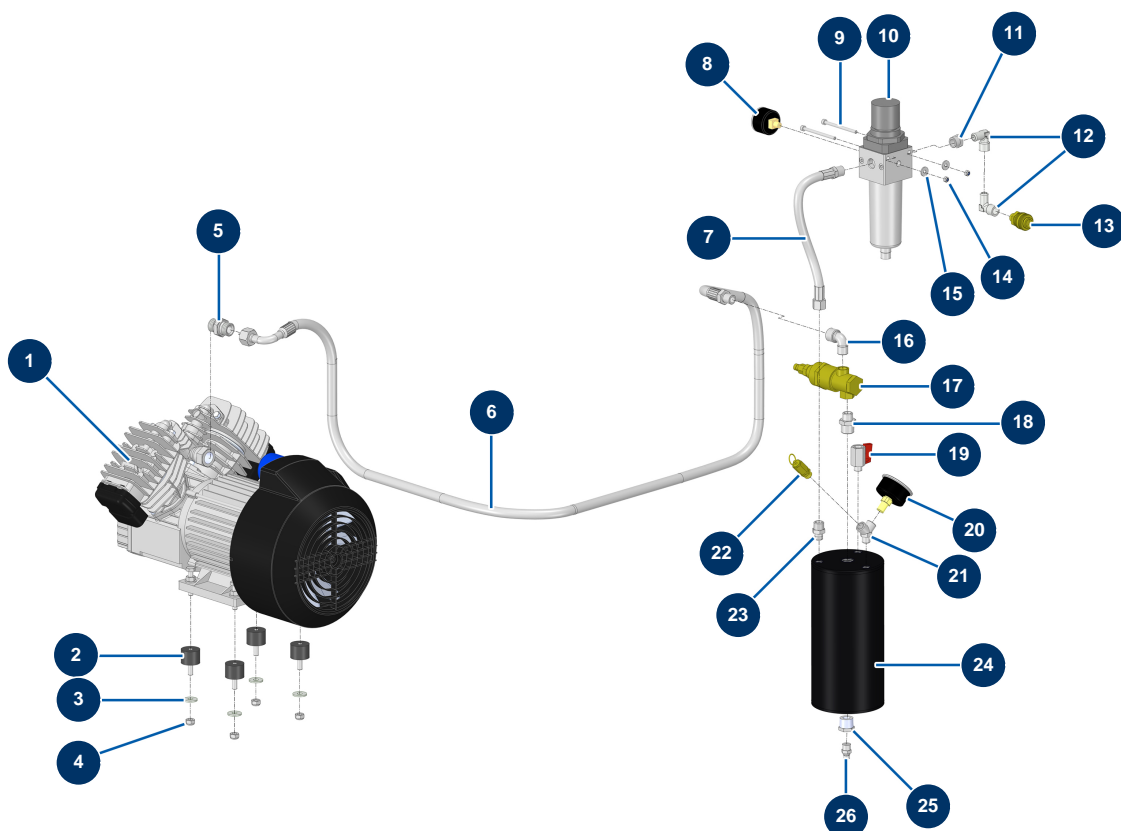


Détails des pièces

| Pos. | Référence | Désignation |
|------|-----------|--|
| 1 | C24038 | 1 |
| 2 | C23485 | |
| 3 | C23616 | |
| 4 | 30044 | Electric motor 1,85 kW - T90 - B14 - 1400 rpm - 400V |
| 5 | 15155 | Coaxial speed reducer - T412A - R18,04 - B14/T90 |
| 6 | 13692 | CP25 motor flange seal |
| 7 | 70062 | Spi seal 40 x 52 x 7 for 4,6,8P, AG, MPE, 7000z, 9000z |
| 8 | M10510 | CP25 motor flange |
| 9 | 30121 | 90° low-pressure elbow 1/4 MaleC x 1/4 FemaleD |
| 10 | 90639 | Automatic greaser |
| 11 | M10811 | Drive shaft for CP 25 CLASSIC V3 |
| 12 | 11359 | CP 30 transmission shaft screw pin |
| 13 | 80260 | ø 8 inox medium washer |

| Pos. | Référence | Désignation |
|------|--------------|---|
| 14 | 13980 | M 8 nylstop inox nut |
| 15 | 14186 | 15 |
| 16 | M10103 | |
| 17 | 70031 | Drain valve for EUROPRO 4-6-8-14 P, MPE, AG, 7000z, 9000z |
| 18 | K008040 | |
| 19 | 90520 | CP 30 rotor screw pin |
| 20 | 14217 | M 6 nylstop inox nut |
| 21 | MI3F00660000 | KOSNER MK80 EPDM 70SH pump stator |
| 22 | MI7009501400 | KOSNER MK 80 pump rotor |
| 23 | C24061 | 23 |
| 24 | MI3G00100301 | |
| 25 | 30280 | ø 10 inox narrow washer |
| 26 | 13978 | M10 inox nut |

TWINMIX two-component dosing machine - Air circuit

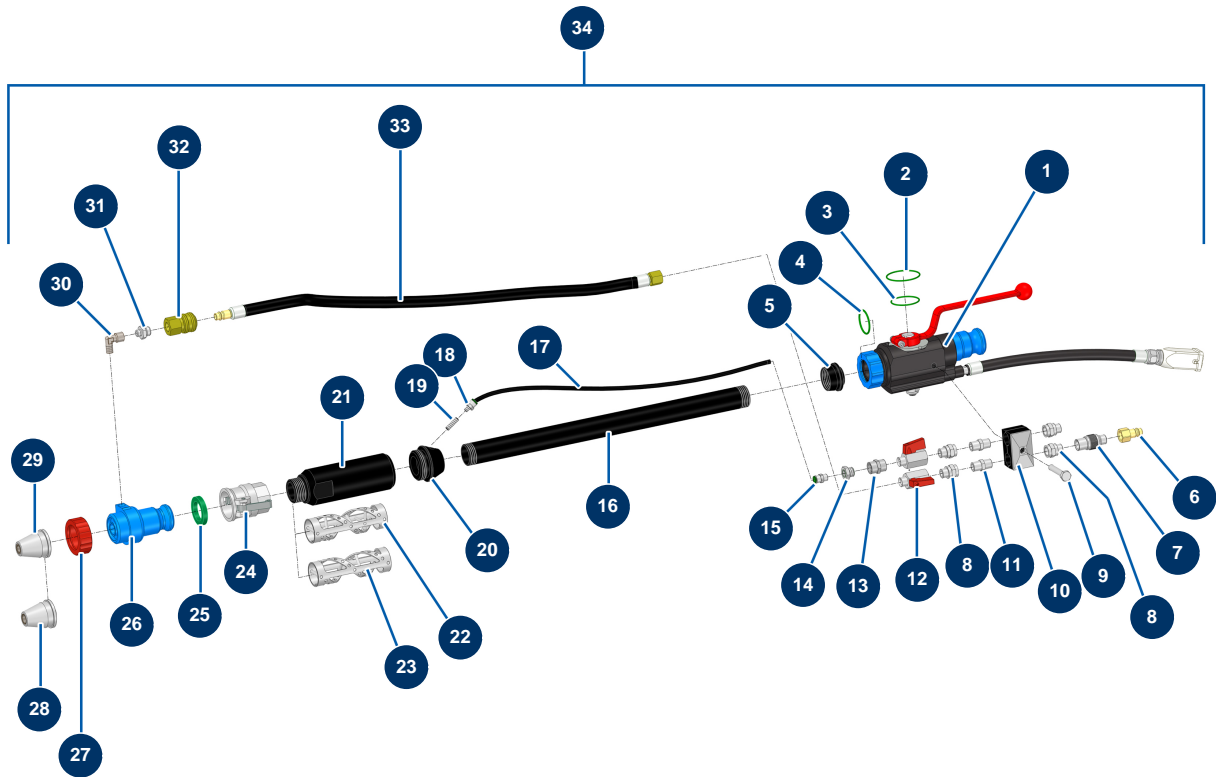


Détails des pièces

| Pos. | Référence | Désignation |
|------|-----------|--|
| 1 | 30154 | Compression head for EUROPRO 30 and 30+ |
| 2 | 30151 | Silentbloc ø 30 x 22 M-F8 |
| 3 | 30292 | ø 8 inox large washer |
| 4 | 90127 | M 8 nylstop nut |
| 5 | 90627 | 1/2" MaleD x 1/2" MaleD high-pressure nipple |
| 6 | 10229 | ø 12 galvanised braided hose |
| 7 | 10228 | |
| 8 | 80023 | Axial manometer 1/8 conical 40 mm 0 to 10 bar |
| 9 | 12447 | 5 x 70 cylindrical head screw |
| 10 | 90756 | Superimposed 3/8" regulator filter |
| 11 | 90242 | 3/8" MaleC x 1/4" FemaleD low-pressure reduction |
| 12 | 30121 | 90° low-pressure elbow 1/4 MaleC x 1/4 FemaleD |
| 13 | 70016 | 1/4" outer threaded female quick fit coupling |

| Pos. | Référence | Désignation |
|------|-----------|---|
| 14 | 11880 | M 5 nylstop nut |
| 15 | 30290 | ø 5 large washer |
| 16 | 30120 | Elbow BP 90° 3/8 MaleC x 3/8 FemaleD |
| 17 | 101015 | 3/8" emptying autonomous valve |
| 18 | 80339 | 3/8" MaleC x 1/2" MaleC low-pressure nipple |
| 19 | 30135 | 1/4" mini lux valve |
| 20 | 80028 | 1/4 conical axial manometer - 50mm - 0 to 20 bar |
| 21 | 30123 | Low pressure Y - M1/4" x F1/4" x F1/4" |
| 22 | 80097 | 1/4" certified outer threaded safety valve 11 bar |
| 23 | 91019 | 1/4" MaleD x 3/8" MaleD low-pressure nipple |
| 24 | C21080 | 24 |
| 25 | 12731 | 1/4" FemaleD x 1/2" MaleD high-pressure nipple |
| 26 | 30133 | 1/4" male compressor tank purge |

TWINMIX two-component dosing machine - Spraying group

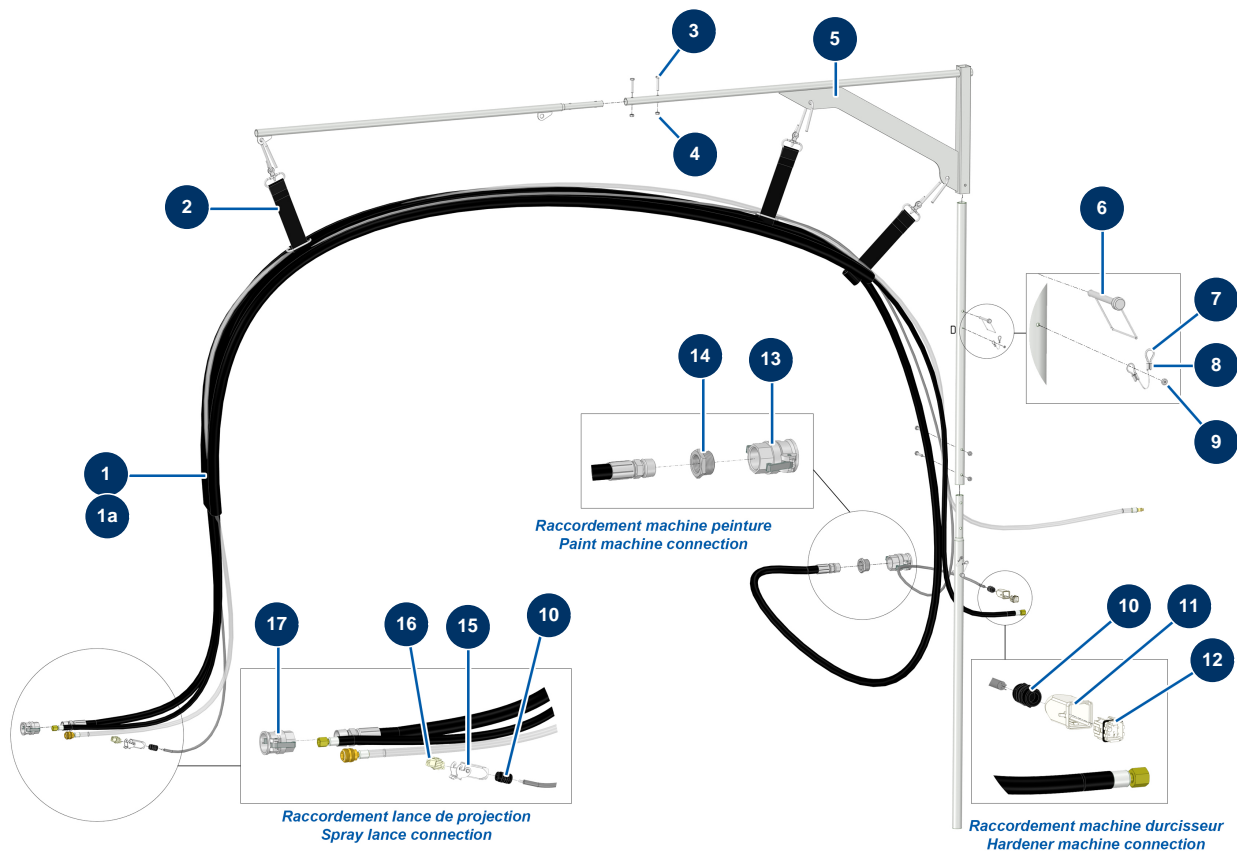


Détails des pièces

| Pos. | Référence | Désignation |
|------|-----------|---|
| 1 | 12020 | MIXPRO 14 & 28 floor screed ABS spray lance |
| 2 | 15475 | FKM 80sh O-ring 43 x 2 |
| 3 | 15474 | FKM 80sh O-ring 36 x 2 |
| 4 | 15473 | FKM 80sh O-ring 30 x 2,5 |
| 5 | M10932 | |
| 6 | 70046 | 1/4" inner threaded male quick fit coupling |
| 7 | 20008 | Air adjustment tap 1/4" M x 1/4" F |
| 8 | 90773 | 1/4" MaleD x 1/4" FemaleD low-pressure nipple |
| 9 | 11798 | THEF 8 x 45 screw |
| 10 | 13310 | |
| 11 | 70027 | 1/4" MaleC x 1/4" MaleC low-pressure nipple |
| 12 | 30135 | 1/4" mini lux valve |
| 13 | 80653 | 1/4" FemaleD x 1/4" FemaleD low-pressure nipple |

| Pos. | Référence | Désignation |
|------|-----------|---|
| 14 | 90240 | 1/4" MaleC x 1/8" FemaleD low-pressure reduction |
| 15 | 91038 | Legris straight coupling M1/8 Ø 6 |
| 16 | M10934 | |
| 17 | 30403 | Calibrated polyurethane tube ø 4 x 6 black by the metre |
| 18 | 15458 | |
| 19 | M10935 | 19 |
| 20 | M10933 | |
| 21 | M10909 | |
| 22 | C24059 | |
| 23 | C24058 | |
| 24 | 70007 | 1" camlock alu coupling, inner threaded 1" for 6, 8, 14 & 24P |
| 25 | 15443 | |
| 26 | M10483 | |
| 27 | 10031 | Aluminium lance ring red |
| 28 | 10052 | Grey nozzle Ø 12mm |
| 29 | 10050 | Grey nozzle Ø 10mm |
| 30 | 91169 | Elbow BP 90° 1/8 MaleC x 1/8 FemaleD |
| 31 | 11110 | 1/8" MaleC x 1/4" MaleC low-pressure nipple |
| 32 | 70017 | 1/4" inner threaded female quick fit coupling |
| 33 | 15343 | |
| 34 | K000037 | |

TWINMIX two-component dosing machine - Mast and piping

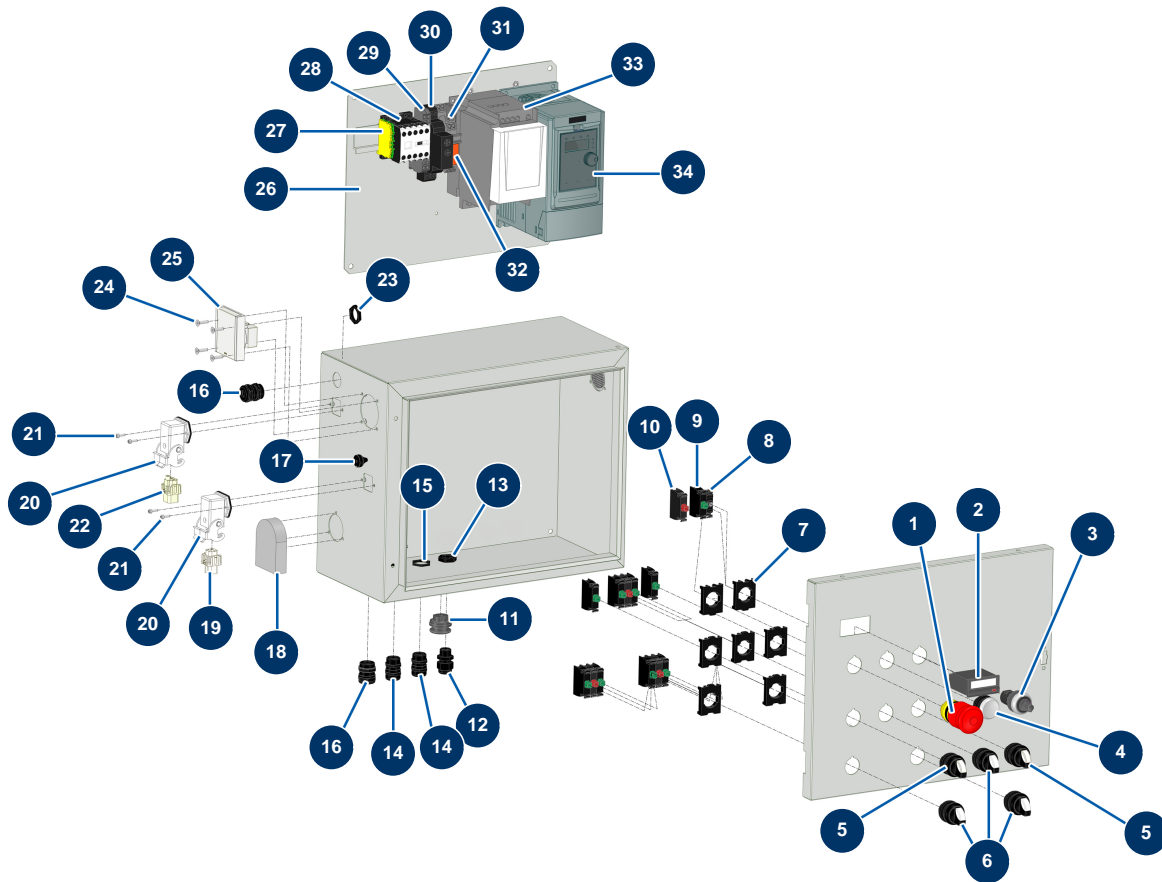


Détails des pièces

| Pos. | Référence | Désignation |
|------|-----------|--|
| 1 | 15342 | |
| 1a | 14267 | |
| 2 | 30440 | Suspension strap for air/product hose |
| 3 | 11798 | THEF 8 x 45 screw |
| 4 | 90440 | M 8 zinc plated nut |
| 5 | 10756 | 5 |
| 6 | 15304 | |
| 7 | 12031 | |
| 8 | 12032 | |
| 9 | 14790 | ø 4 x 14 aluminium POP rivet |
| 10 | 30082 | Nickel plated watertight cable gland of 11 |
| 11 | 11916 | Blowing machine insulating cover 3 p + T |
| 12 | 11913 | Blowing machine male insert 4 p + T |

| Pos. | Référence | Désignation |
|------|-----------|---|
| 13 | 70006 | 1"1/4 camlock alu coupling, inner threaded 1"1/4 for 24P |
| 14 | 80157 | 1"1/4 MaleC x 1" FemaleD low-pressure reduction |
| 15 | 11966 | Blowing machine 1 lever insulating cover 3 p + T |
| 16 | 11914 | Female insert 4p + G |
| 17 | 70007 | 1" camlock alu coupling, inner threaded 1" for 6, 8, 14 & 24P |

TWINMIX two-component dosing machine - Electrical box



Détails des pièces

| Pos. | Référence | Désignation |
|------|-----------|---|
| 1 | 90727 | Hook emergency stop button - CP 60 |
| 2 | 11968 | |
| 3 | 80645 | Spraying machine complete potentiometer from MARCH 2003 |
| 4 | 30035 | Impulse transparent indicator button |
| 5 | 30025 | 2-position button |
| 6 | 90731 | 3-position button |
| 7 | 30036 | 3-contact U-bolt |
| 8 | 14665 | Led Bulb 24 VDC multicoloured |
| 9 | 30028 | Green single closed contact |
| 10 | 30356 | Red single open contact |
| 11 | 12022 | Box door shutter button |
| 12 | 1002837 | PG 09 watertight cable gland |
| 13 | 1002838 | PG 9 cable gland nut |

| Pos. | Référence | Désignation |
|------|--------------|---|
| 14 | 30082 | Nickel plated watertight cable gland of 11 |
| 15 | 30060 | 11mm cable gland nut |
| 16 | 80448 | M 20 waterproof cable gland |
| 17 | 11563 | M 12 grey rubber cable gland |
| 18 | K008274 | |
| 19 | 11912 | Blowing machine female insert 3 p + T |
| 20 | 12543 | Insulating bend socket base 3p + G - 1 lever |
| 21 | 310011 | 3 x 10 cylindrical head screw |
| 22 | 11914 | Female insert 4p + G |
| 23 | 11197 | M 20 cable gland nut |
| 24 | 13912 | 4 x 16 countersunk head screw |
| 25 | 90489 | 2P recessed socket + t with grey valve |
| 26 | C23463 | 26 |
| 27 | 30038 | Yellow and green conductive block 6 mm ² |
| 28 | 30011 | 230 Volt coil switch for sprayer |
| 29 | 80482 | Grey conductor block 6 mm ² |
| 30 | MI3C03750400 | Timer 2 delayed threads 24/230AC/DC |
| 31 | 12751 | Plug-in miniature relay base |
| 32 | 13140 | Miniature plug-in relay 24V VDC - 2RT |
| 33 | 12098 | Inverter 230 V - 0,55 KW |
| 34 | 80459 | Inverter 230 V - 2.2 KW |