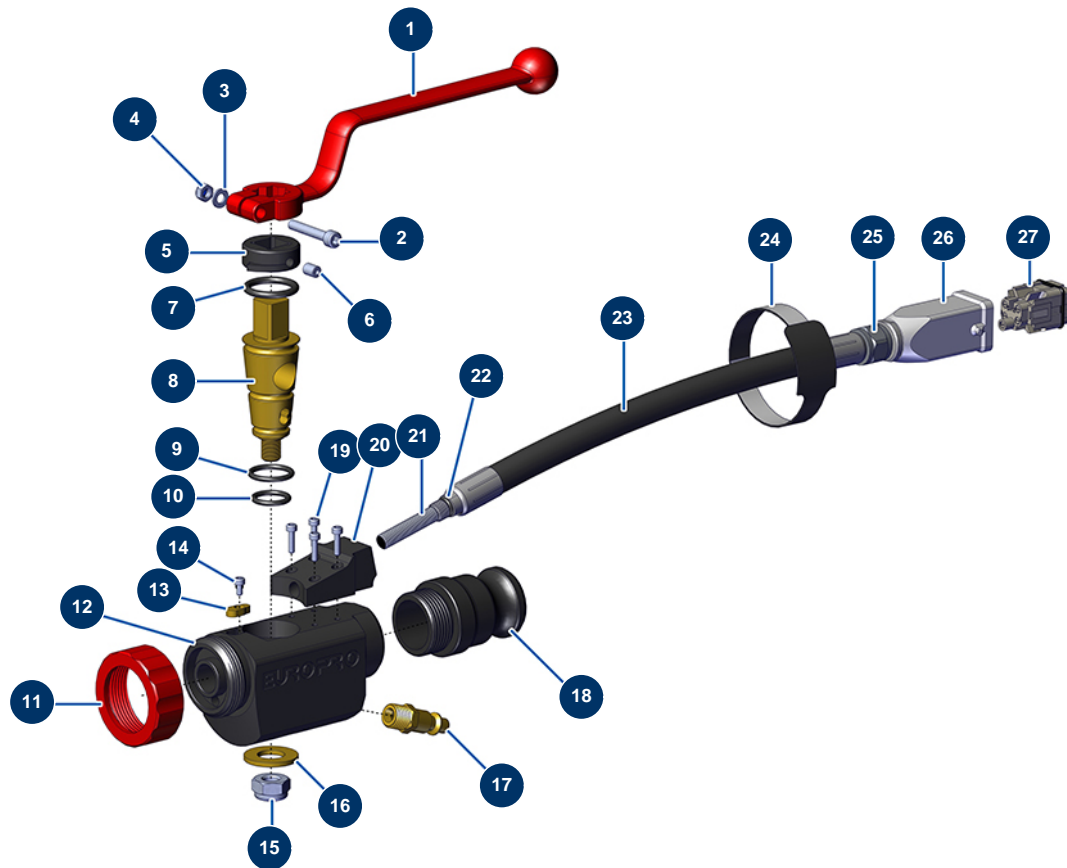


8, 14 and 24 P ABS spray lance with starting switch - General view



Détails des pièces

Pos.	Référence	Désignation
1	20003	Red bend handle for lance (square of 14)
2	12245	5 x 30 cylindrical head screw
3	70085	ø 5 narrow washer
4	11880	M 5 nylstop nut
5	M10367	Detection cam for ABS lance with start contact
6	30371	ABS lance countersunk screw
7	60028	O-ring 21,30 x 3,60
8	M10371	Brass cone for ABS lance with start contact
9	60027	O-ring 18,40 x 2,70
10	60026	O-ring 15,10 x 2,70
11	10031	Aluminium lance ring red
12	M10368	ABS lance body with start contact
13	M10370	Stop finger for ABS lance with start contact

Pos.	Référence	Désignation
14	13329	3 x 6 cylindrical head screw
15	60013	M 10 nylstop nut
16	10032	Lance washer
17	70043	1/4" outer threaded male quick-connector
18	10280	1" x M 30/150 alu adapter for 8, 14, 24 and CP30 lance
19	12249	3 x 12 cylindrical head screw
20	M10366	Sensor support for ABS lance with start contact
21	12311	M8 inductive sensor
22	11303	12 x 2 o-ring
23	13367	JETPRO spray-gun cable reinforced protection flexible hose
24	12410	Self-gripping collar with loop 12,7 x 228 mm
25	M10310	3P+T insulation flexible hose/hood link ring
26	11916	Blowing machine insulating cover 3 p + T
27	11913	Blowing machine male insert 4 p + T