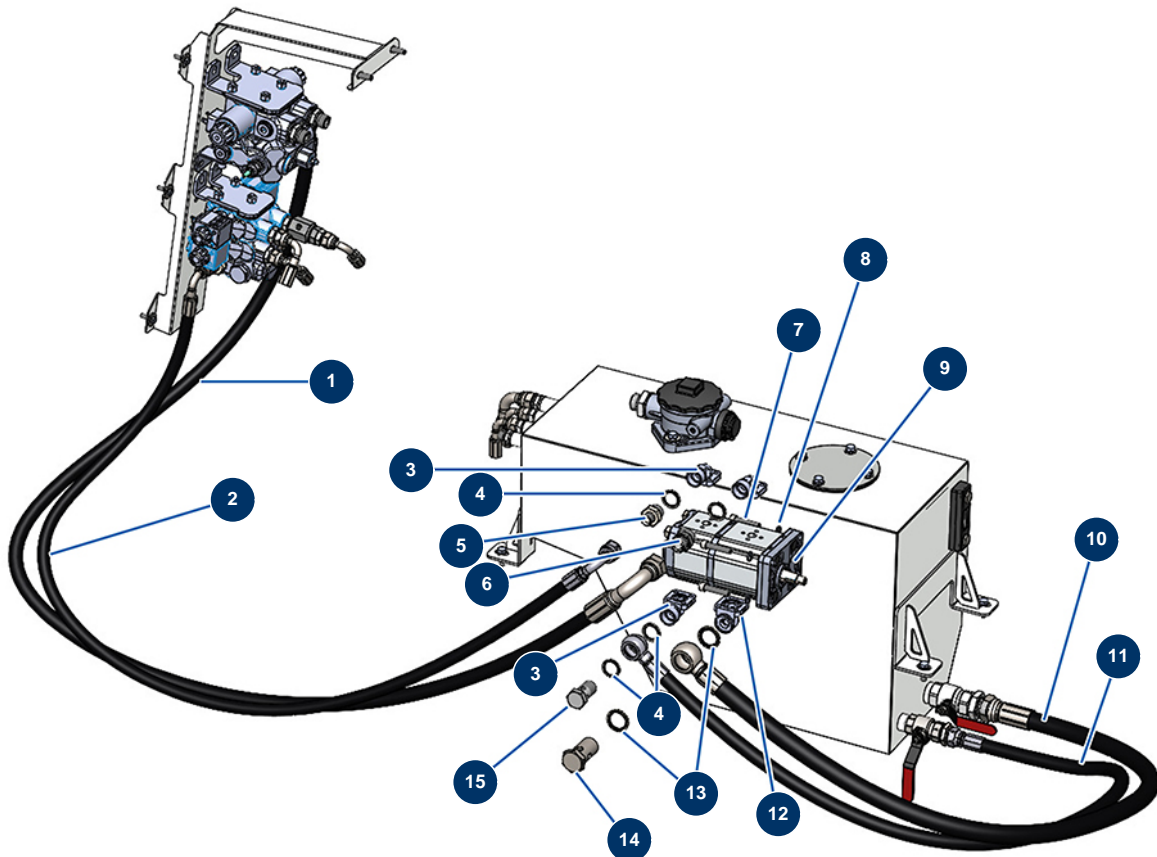


X-SCREED D60 dry screed machine - stage V 42kW - Hydraulic Pump



Détails des pièces

| Pos. | Référence | Désignation |
|------|-----------|--|
| 1 | 20583 | 1 |
| 2 | 20584 | 2 |
| 3 | 20135 | |
| 4 | 91032 | Steel gasket for hollow screw with 1/2" lip |
| 5 | 90872 | 1/2" MaleD x 3/8" MaleD high-pressure nipple |
| 6 | 90627 | 1/2" MaleD x 1/2" MaleD high-pressure nipple |
| 7 | 12246 | 8 x 40 cylindrical head screw |
| 8 | 80269 | Grover washer ø 8 |
| 9 | 20131 | |
| 10 | 20581 | 10 |
| 11 | 20582 | 11 |
| 12 | 20136 | |
| 13 | 12573 | Steel gasket for 3/4" hollow screw with lip |

| Pos. | Référence | Désignation |
|------|-----------|-----------------------------|
| 14 | 13307 | 3/4 HP drilled head screw |
| 15 | 13285 | 1/2 drilled head screw ø 21 |