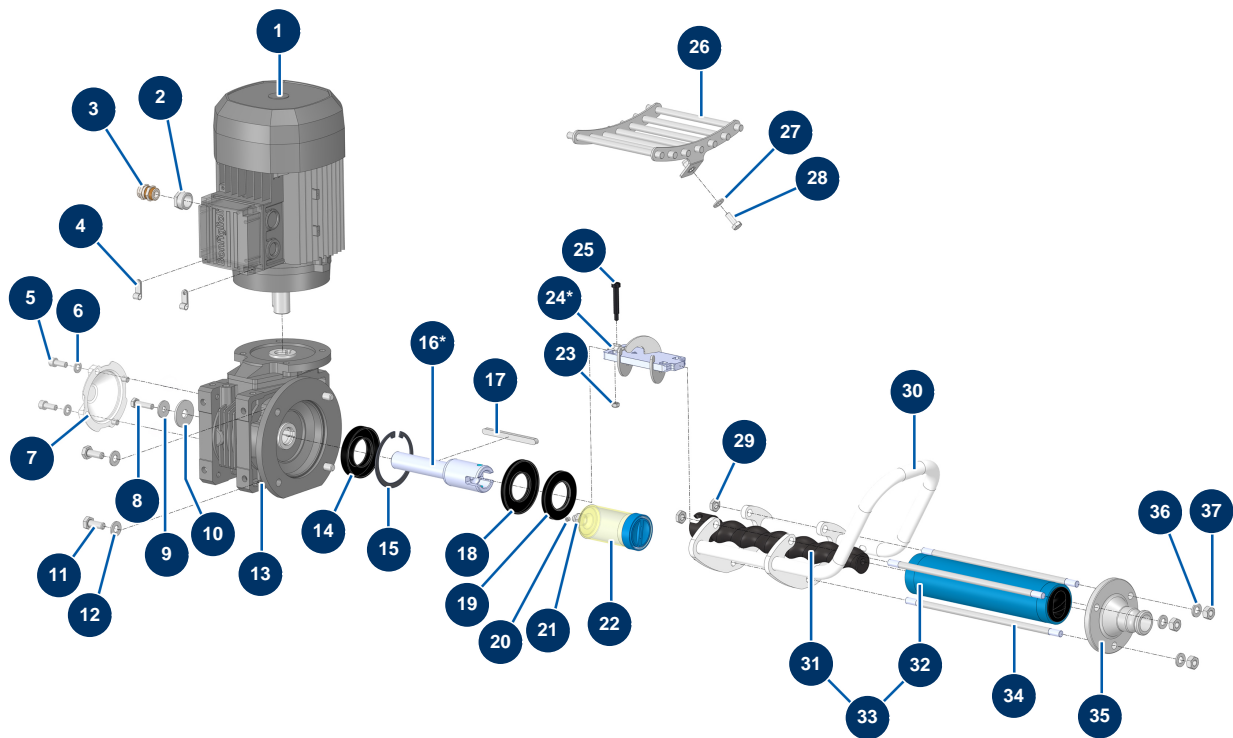


DROPPRO 14P spraying machine - Transmission (from 12/2023)



** Pour les modèles avant septembre 2019, il est impératif de commander ces 2 pièces.
For models before September 2019, it is mandatory to order this 2 parts.*

Détails des pièces

Pos.	Référence	Désignation
1	30044	Electric motor 1,85 kW - T90 - B14 - 1400 rpm - 400V
2	80446	Cable gland reduction M 25-11
3	30040	Nickel plated watertight cable gland of 11 CEM
4	90266	Cable support Ø 7.9
5	80470	8 x 20 cylindrical head screw
6	30256	ø 8 inox narrow washer
7	90287	14 P2 & 24 P gear reducer plastic cover
8	30205	THEF 8 x 30 screw
9	30292	ø 8 inox large washer
10	30294	ø 12 inox large washer
11	30257	THEF 10 x 25 screw
12	80261	ø 10 inox medium washer
13	90504	Speed reducer 90° - T63 - R15 - B14/T90

Pos.	Référence	Désignation
14	15219	Spi seal 40 x 75 x 12
15	15244	Ø 80 inner circlip
16*	M10817	MINIJET 120 drive shaft with screw coupling
17	90750	8 x 7 x 100 parallel key with round end for 24P et PT
18	90726	Spi seal 40 x 80 x 7 for 14P
19	15243	Spi seal 40 x 72 x 7
20	11941	6 x 5 stainless steel socket head screw with flat tip
21	10899	1/8" MaleD x 1/4" FemaleD low-pressure nipple
22	90639	Automatic greaser
23	20004	M 6 nylstop nut
24*	C22978	MINIJET 120 connecting rod
25	90520	CP 30 rotor screw pin
26	C22509	Removable grid for DROPPRO 14P & MINJET 120
27	80260	ø 8 inox medium washer
28	30273	THEF 8 x 20 screw
29	13979	M10 flat inox nut
30	C22982	DROPPRO & MINIJET pump handle
31	MI7009107200	EUROPRO MAP 4 pump rotor with slit head
32	MI3F00529300	EUROPRO MAP 4 SX pump stator
33	30444	EUROPRO MAP 4 pump rotor/stator kit
34	10034	Fixation tie rod for MAP 2/3
35	10010	Blue stator flange for EUROPRO 8P and 14P
36	30280	ø 10 inox narrow washer
37	13978	M10 inox nut