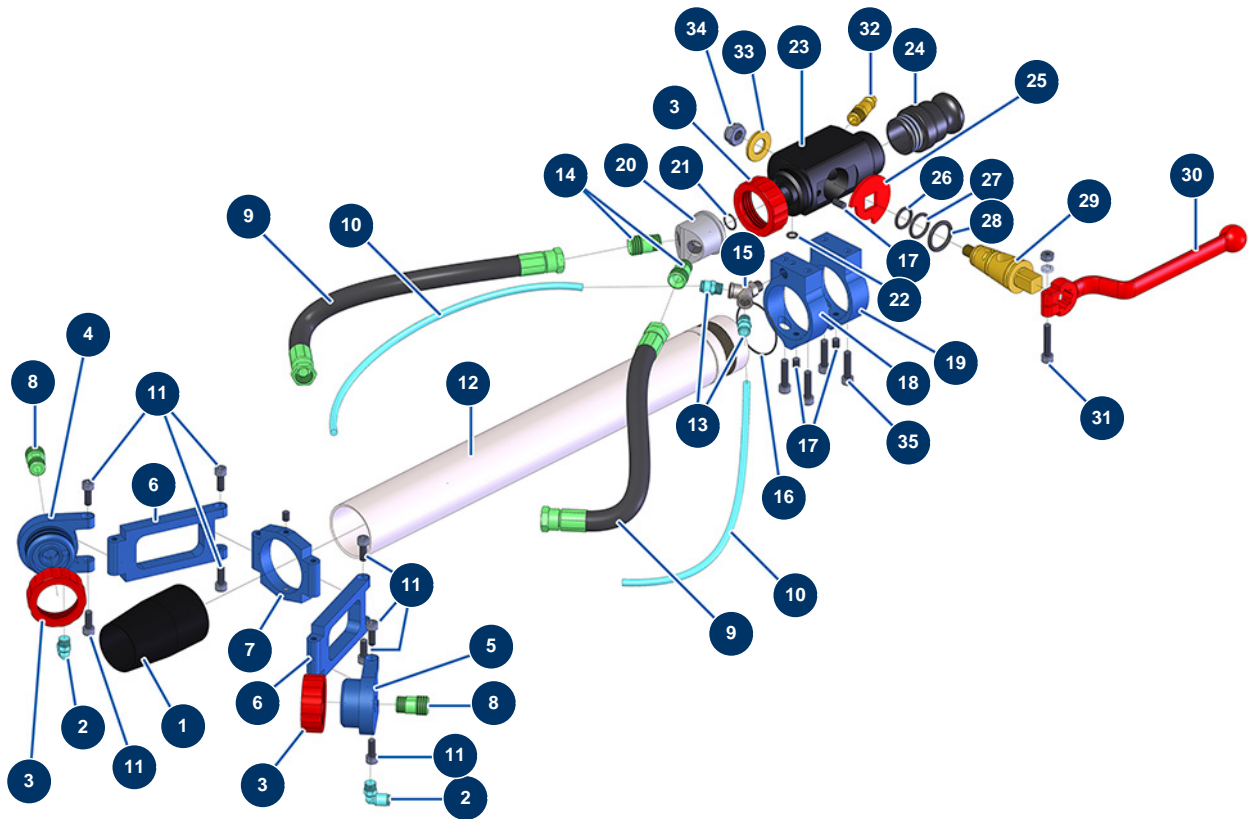


## 2 heads Ø 50 hemp and lime lance alone - General view



### Détails des pièces

| Pos. | Référence | Désignation   |
|------|-----------|---|
| 1    | M10153    | Hemp lance outlet reduction                             |
| 2    | 30124     | Corrugated Legris coupling M1/8" Ø 6                    |
| 3    | 10031     | Aluminium lance ring red                                |
| 4    | M10119    | Hemp lance right nozzle support                         |
| 5    | M10118    | Hemp lance left nozzle support                          |
| 6    | M10155    | Hemp lance nozzle extension                             |
| 7    | M10121    | 2-head articulation support for hemp lance              |
| 8    | M10120    | Product inlet coupling for hemp lance                   |
| 9    | 12206     | Hemp lance product hose Ø 10 x 25 cm                    |
| 10   | 30403     | Calibrated polyurethane tube ø 4 x 6 black by the metre |
| 11   | 90157     | M6 x 16 cylindrical head screw - CP 60                  |
| 12   | M10117    | Hemp lance tube   |
| 13   | 91038     | Legris straight coupling M1/8 Ø 6                       |

| Pos. | Référence      | Désignation  |
|------|----------------|--|
| 14   | M10120         | Product inlet coupling for hemp lance                  |
| 15   | 12137          | Low pressure Y - M1/8" x F1/8" x F1/8"                 |
| 16   | nous consulter | 16   |
| 17   | 30371          | ABS lance countersunk screw                            |
| 18   | M10124         | ABS body support for hemp lance air outlet             |
| 19   | M10123         | ABS body support for hemp lance                        |
| 20   | M10122         | Hemp lance distributor head 2 outlets                  |
| 21   | 14600          | 12 x 1,5 O-ring  |
| 22   | 14616          | 6 x 2 O-ring   |
| 23   | M10125         | Hemp lance body  |
| 24   | 10280          | 1" x M 30/150 alu adapter for 8, 14, 24 and CP30 lance |
| 25   | 10030          | Stop washer  |
| 26   | 60026          | O-ring 15,10 x 2,70                                    |
| 27   | 60027          | O-ring 18,40 x 2,70                                    |
| 28   | 60028          | O-ring 21,30 x 3,60                                    |
| 29   | 10029          | Lance brass cone                                       |
| 30   | 20003          | Red bend handle for lance (square of 14)               |
| 31   | 90153          | 6 x 30 cylindrical head screw                          |
| 32   | 80089          | Male quick fit coupling outer threaded 1/4" Ø 6        |
| 33   | 10032          | Lance washer   |
| 34   | 13981          | M 10 nylstop inox nut                                  |
| 35   | 80614          | 6 x 25 inox cylindrical head screw                     |