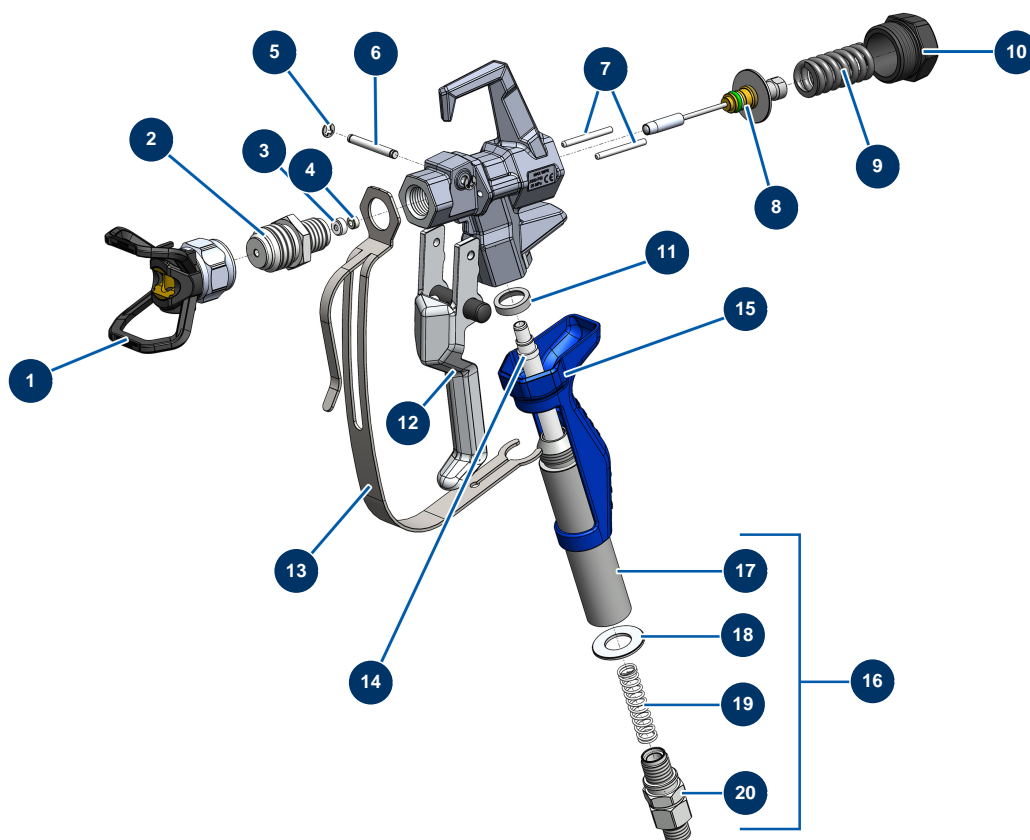


EUROSPRAY S Mini airless piston pump - Spray-gun



Détails des pièces

| Pos. | Référence | Désignation |
|------|-----------|--|
| 1 | 51001 | BST, BBP & BFF 7/8" tip guard |
| 2 | 51036 | PAINTSPRAY spray-gun 7/8" diffuser |
| 3 | 51047 | PAINTSPRAY, COATSPRAY spray-gun needle seat gasket |
| 4 | 51046 | PAINTSPRAY, COATSPRAY spray-gun needle seat |
| 5 | 51043 | PAINTSPRAY, COATSPRAY spray-gun trigger axis circlip |
| 6 | 51042 | PAINTSPRAY spray-gun trigger axis |
| 7 | 51040 | PAINTSPRAY spray-gun retraction pin |
| 8 | 51033 | PAINTSPRAY spray-gun needle repair kit |
| 9 | 51034 | PAINTSPRAY,COATSPRAY spray-gun needle return spring |
| 10 | 51038 | PAINTSPRAY, COATSPRAY spray-gun needle lock plug |
| 11 | 51031 | PAINTSPRAY spray-gun filter holder bearing gasket |
| 12 | 51039 | PAINTSPRAY spray-gun complete trigger |
| 13 | 51032 | PAINTSPRAY spray-gun trigger protection |

| Pos. | Référence | Désignation |
|-------------|------------------|---|
| 14 | 51003 | Spray-gun grip 50-mesh filter |
| 15 | 51037 | PAINTSPRAY spray-gun plastic handle |
| 16 | 51048 | Complete revolving coupling for PAINTSPRAY spray-gun |
| 17 | 51035 | PAINTSPRAY spray-gun filter holder |
| 18 | 51045 | PAINTSPRAY, COATSPRAY spray-gun revolving coupling gasket |
| 19 | 51041 | PAINTSPRAY spray-gun filter holding spring |
| 20 | 51044 | 1/4" MBSP revolving coupling for PAINTSPRAY spray-gun |