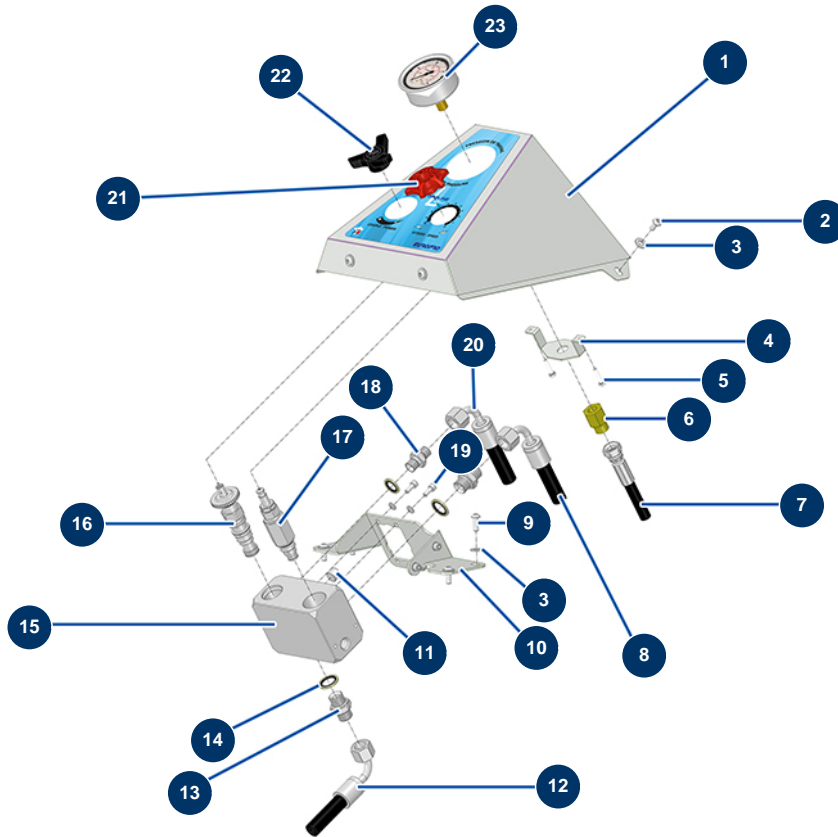


## HYDROLINE L airless self-propelled marking machine - Control panel



### Détails des pièces

Pos.	Référence	Désignation
1	C23698	
2	13197	Inox mushroom head screw M 6 x 12
3	80259	Ø 6 medium washer
4	C23717CST	
5	20376	THEF 4 x 20 screw
6	80326	3/8" MaleD x 1/4" FemaleC high-pressure nipple
7	51438	
8	51505	
9	11145	6 x 16 inox cylindrical pan head screw
10	C23659CST	
11	12576	1/4" MaleC Male high-pressure headless plug
12	51503	
13	90698	3/8" MaleD x 3/8" MaleD high-pressure nipple

<b>Pos.</b>	<b>Référence</b>	<b>Désignation</b>
14	91031	Steel gasket for hollow screw with 3/8 lip
15	M10891	
16	51510	
17	51512	
18	90703	1/4" MaleD x 1/4" MaleD high-pressure nipple
19	90161	5 x 12 inox cylindrical head screw
20	51504	
21	M10231	Wheel for needle valve MIXPRO 14
22	51511	
23	90433	63 mm oil manometer 1/4 conical 0 to 400 bar