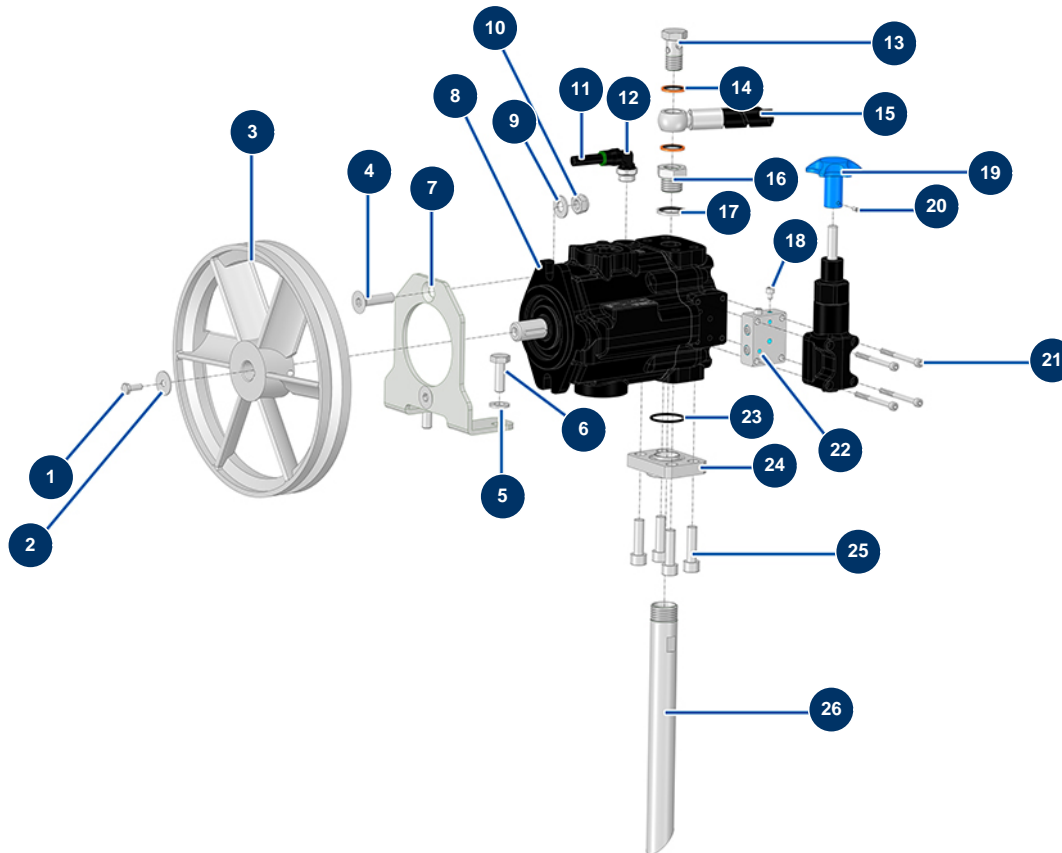


HYDROLINE L airless self-propelled marking machine - Hydraulic pump



Détails des pièces

| Pos. | Référence | Désignation |
|------|-----------|--|
| 1 | 12069 | THEF 6 x 16 screw |
| 2 | 80262 | Very large inox washer Ø 6 |
| 3 | 51403 | Hydraulic group pulley |
| 4 | 14499 | 10 x 40 countersunk head screw |
| 5 | 30280 | ø 10 inox narrow washer |
| 6 | 30258 | THEF 10 x 30 screw |
| 7 | C23685 | 7 |
| 8 | 14925 | Constant pressure hydraulic pump |
| 9 | 80261 | ø 10 inox medium washer |
| 10 | 13981 | M 10 nylstop inox nut |
| 11 | 30405 | Calibrated polyurethane tube ø 7,5 x 10 black by the metre |
| 12 | 14778 | M3/8 ø 10 cylindrical elbow push-in connector |
| 13 | 91033 | 3/8 drilled head screw |

| Pos. | Référence | Désignation |
|------|-----------|---|
| 14 | 91029 | 3/8 copper gasket for hollow screw |
| 15 | 51437 | |
| 16 | 12895 | 3/8" FemaleD x 1/2" MaleD high-pressure nipple |
| 17 | 91032 | Steel gasket for hollow screw with 1/2" lip |
| 18 | 15278 | 5 x 6 cylindrical head screw |
| 19 | M10886 | 19 |
| 20 | 310020 | 4 x 6 stainless steel socket head screw with flat tip |
| 21 | 12456 | 5 x 60 cylindrical head screw |
| 22 | M10884 | 22 |
| 23 | 1032076 | 30 x 2,50 O-ring |
| 24 | M10862 | 24 |
| 25 | 12521 | 10 x 35 cylindrical head screw |
| 26 | M10887 | 26 |