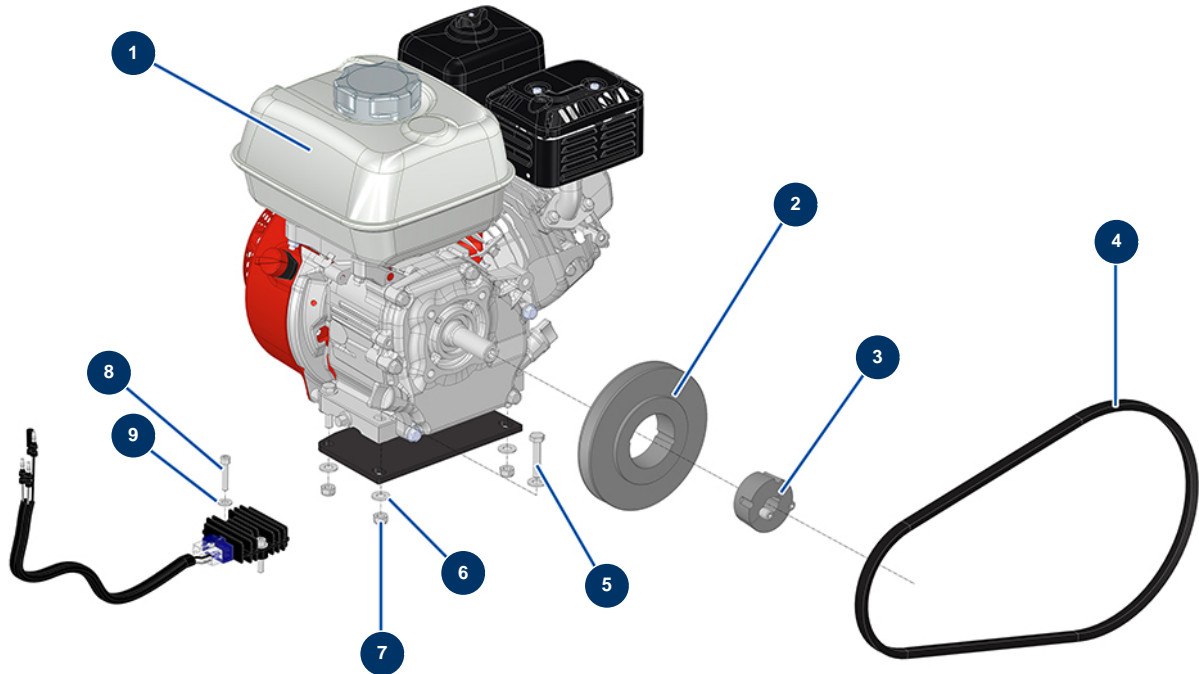


Macchina traccialinee airless HYDROLINE L - Motorizzazione



Détails des pièces

| Pos. | Référence | Désignation |
|------|-----------|--|
| 1 | 14929 | Motore termico HONDA GX 160 |
| 2 | 15253 | Puleggia da 13 senza mozzo ø 85 |
| 3 | 90760 | Mozzo estraibile ø 3/4" per 1610 |
| 4 | 13590 | Cinghia trapezoidale 13 x 8 LI0965 LP0995 LA1015 |
| 5 | 30250 | Vite THEF 8 x 40 |
| 6 | 80260 | Rondella media ø 8 inox |
| 7 | 90127 | Dado M 8 nylstop |
| 8 | 90153 | Vite testa cilindrica 6 x 30 |
| 9 | 80259 | Rondella media ø 6 |