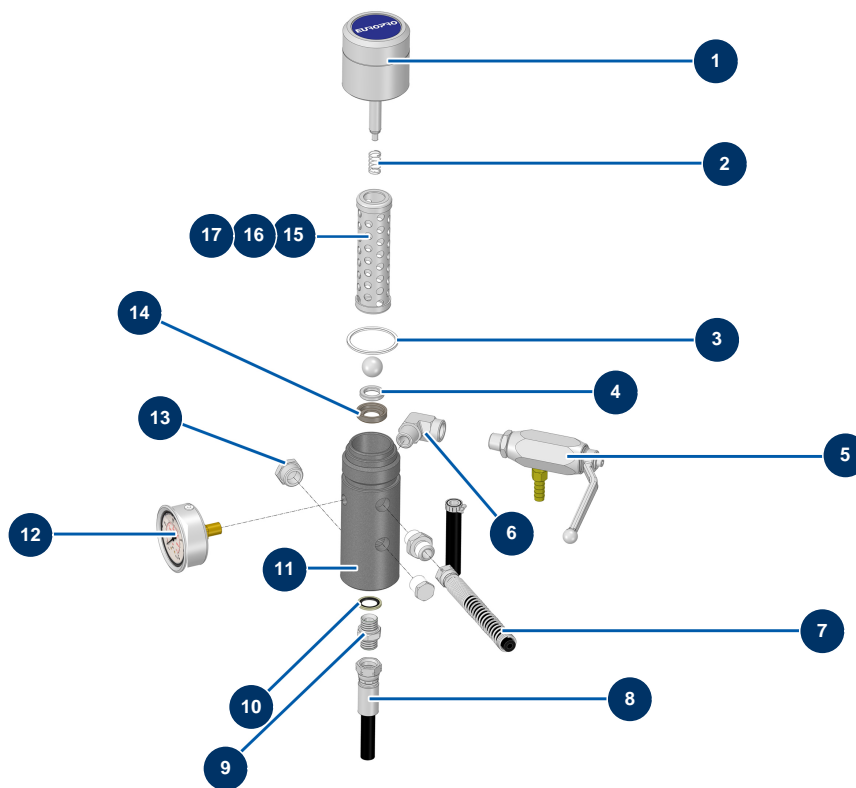


HYDROLINE L airless marking machine - Paint filter



Détails des pièces

| Pos. | Référence | Désignation |
|------|-----------|--|
| 1 | 15182 | 6/12L hydraulic pump filter plug |
| 2 | 15183 | Hydraulic pump filter spring 6/12L |
| 3 | 15184 | Joint filtre pompe hydraulique 6/12L |
| 4 | 15185 | O-ring for 6/12L hydraulic pump filter |
| 5 | 15190 | Vanne retour filtre pompe hydraulique 6/12L |
| 6 | 15189 | 6 |
| 7 | 40052 | 2 x 1/4"F-F 15 m 270 bar high-pressure flexible hose |
| 8 | 51439 | |
| 9 | 90698 | 3/8" MaleD x 3/8" MaleD high-pressure nipple |
| 10 | 91031 | Steel gasket for hollow screw with 3/8 lip |
| 11 | 15187 | Hydraulic pump filter body 6/12L |
| 12 | 90433 | 63 mm oil manometer 1/4 conical 0 to 400 bar |
| 13 | 90239 | 1/2" low-pressure male plug |

| Pos. | Référence | Désignation |
|------|-----------|---------------------------------------|
| 14 | 15186 | Hydraulic pump filter ball seat 6/12L |
| 15 | 15230 | 5-mesh HYDROLINE pump filter |
| 16 | 15129 | 50-mesh HYDROLINE pump filter |
| 17 | 15130 | 100-mesh HYDROLINE pump filter |