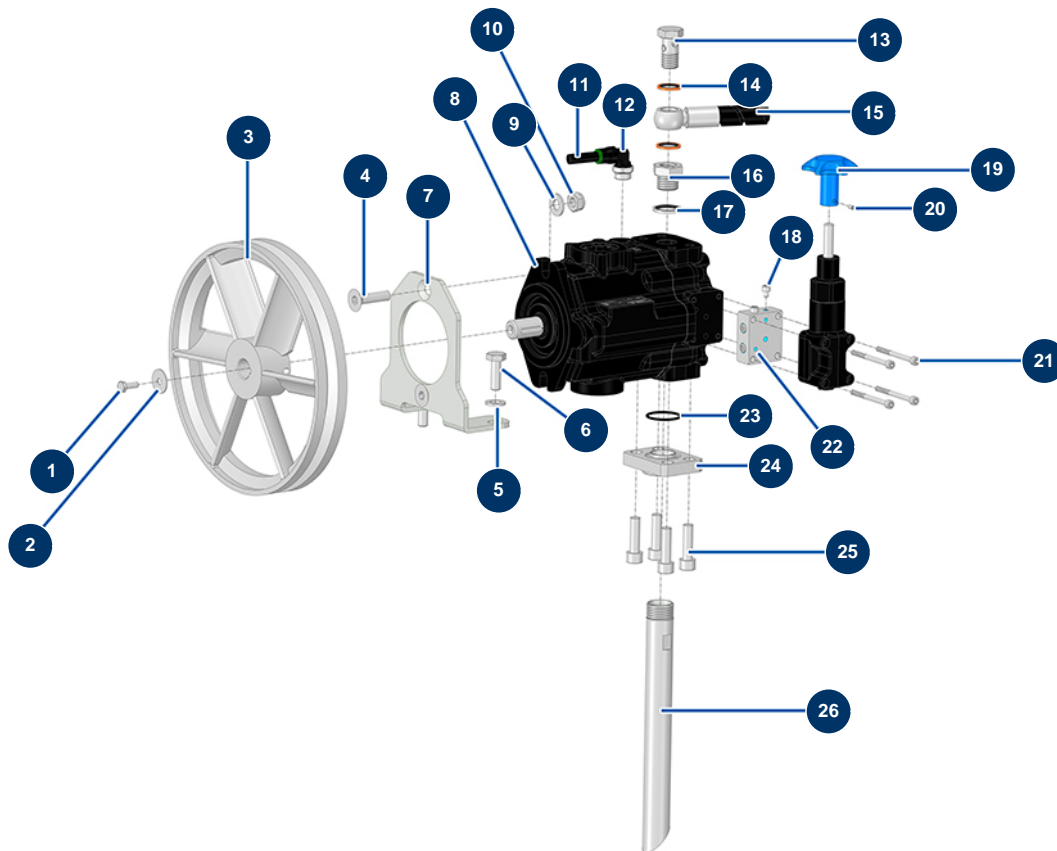


## HYDROLINE L airless self-propelled marking machine - 2 spray-guns - Pump



### Détails des pièces

| Pos. | Référence | Désignation  |
|------|-----------|--|
| 1    | 12069     | THEF 6 x 16 screw  |
| 2    | 80262     | Very large inox washer Ø 6                                 |
| 3    | 51403     | Hydraulic group pulley                                     |
| 4    | 14499     | 10 x 40 countersunk head screw                             |
| 5    | 30280     | ø 10 inox narrow washer                                    |
| 6    | 30258     | THEF 10 x 30 screw   |
| 7    | C23685    | 7  |
| 8    | 14925     | Constant pressure hydraulic pump                           |
| 9    | 80261     | ø 10 inox medium washer                                    |
| 10   | 13981     | M 10 nylstop inox nut                                      |
| 11   | 30405     | Calibrated polyurethane tube ø 7,5 x 10 black by the metre |
| 12   | 14778     | M3/8 ø 10 cylindrical elbow push-in connector              |
| 13   | 91033     | 3/8 drilled head screw                                     |

| Pos. | Référence | Désignation   |
|------|-----------|---|
| 14   | 91029     | 3/8 copper gasket for hollow screw                    |
| 15   | 51437     |   |
| 16   | 12895     | 3/8" FemaleD x 1/2" MaleD high-pressure nipple        |
| 17   | 91032     | Steel gasket for hollow screw with 1/2" lip           |
| 18   | 15278     | 5 x 6 cylindrical head screw                          |
| 19   | M10886    | 19  |
| 20   | 310020    | 4 x 6 stainless steel socket head screw with flat tip |
| 21   | 12456     | 5 x 60 cylindrical head screw                         |
| 22   | M10884    | 22  |
| 23   | 1032076   | 30 x 2,50 O-ring                                      |
| 24   | M10862    | 24  |
| 25   | 12521     | 10 x 35 cylindrical head screw                        |
| 26   | M10887    | 26  |