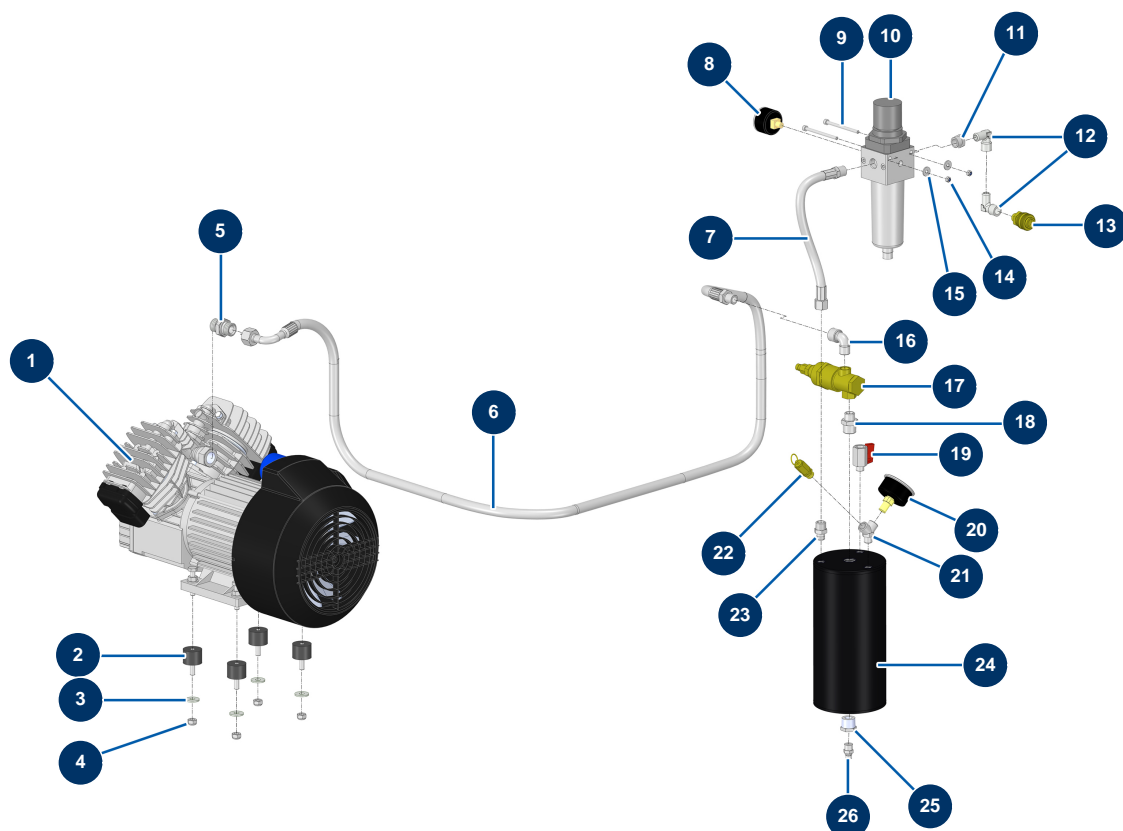


## TWINMIX two-component dosing machine - Air circuit



### Détails des pièces

| Pos. | Référence | Désignation                                      |
|------|-----------|--|
| 1    | 30154     | Compression head for EUROPRO 30 and 30+          |
| 2    | 30151     | Silentbloc ø 30 x 22 M-F8                        |
| 3    | 30292     | ø 8 inox large washer                            |
| 4    | 90127     | M 8 nylstop nut                                  |
| 5    | 90627     | 1/2" MaleD x 1/2" MaleD high-pressure nipple     |
| 6    | 10229     | ø 12 galvanised braided hose                     |
| 7    | 10228     |  |
| 8    | 80023     | Axial manometer 1/8 conical 40 mm 0 to 10 bar    |
| 9    | 12447     | 5 x 70 cylindrical head screw                    |
| 10   | 90756     | Superimposed 3/8" regulator filter               |
| 11   | 90242     | 3/8" MaleC x 1/4" FemaleD low-pressure reduction |
| 12   | 30121     | 90° low-pressure elbow 1/4 MaleC x 1/4 FemaleD   |
| 13   | 70016     | 1/4" outer threaded female quick fit coupling    |

| Pos. | Référence | Désignation                                       |
|------|-----------|---|
| 14   | 11880     | M 5 nylstop nut                                   |
| 15   | 30290     | ø 5 large washer                                  |
| 16   | 30120     | Elbow BP 90° 3/8 MaleC x 3/8 FemaleD              |
| 17   | 101015    | 3/8" emptying autonomous valve                    |
| 18   | 80339     | 3/8" MaleC x 1/2" MaleC low-pressure nipple       |
| 19   | 30135     | 1/4" mini lux valve                               |
| 20   | 80028     | 1/4 conical axial manometer - 50mm - 0 to 20 bar  |
| 21   | 30123     | Low pressure Y - M1/4" x F1/4" x F1/4"            |
| 22   | 80097     | 1/4" certified outer threaded safety valve 11 bar |
| 23   | 91019     | 1/4" MaleD x 3/8" MaleD low-pressure nipple       |
| 24   | C21080    | 24  |
| 25   | 12731     | 1/4" FemaleD x 1/2" MaleD high-pressure nipple    |
| 26   | 30133     | 1/4" male compressor tank purge                   |