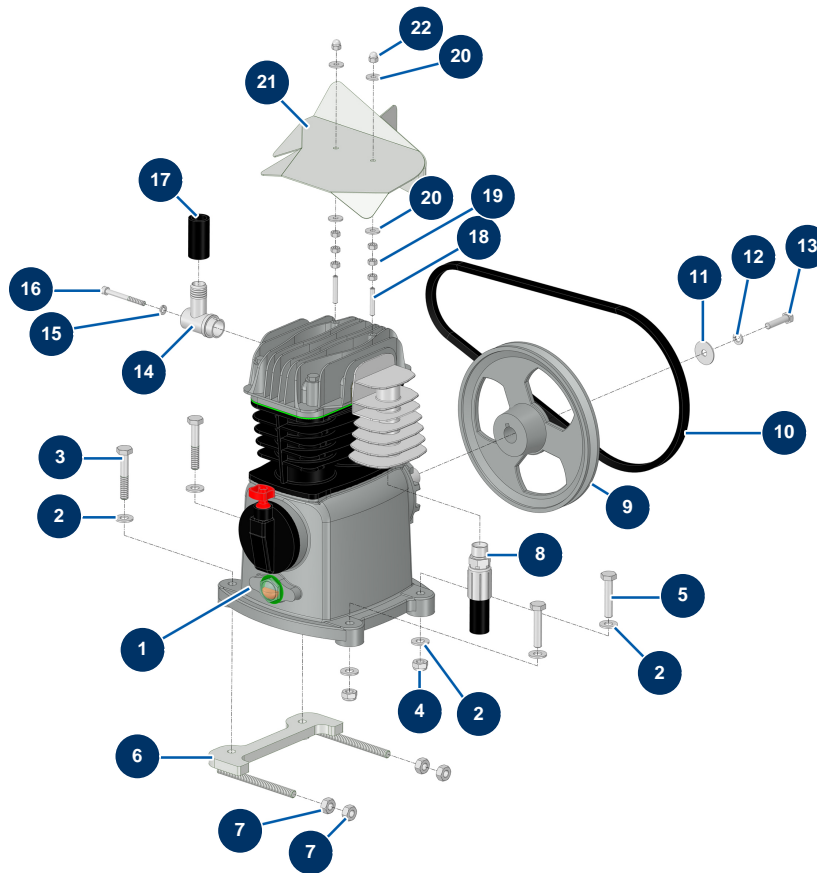


Intonacatrice X-PRO D60 V2 - Testa compressore



Détails des pièces

| Pos. | Référence | Désignation |
|------|-----------|--|
| 1 | 12653 | Testa compressione KDT3.100/6-29MTKW5,5/6,6 IE2 BE |
| 2 | 80261 | Rondella media ø 10 inox |
| 3 | 12770 | Vite THPF 10 x 60 |
| 4 | 60013 | Dado M 10 nylstop |
| 5 | 30260 | Vite THEF 10 x 50 |
| 6 | C23772C | |
| 7 | 90453 | Dado M 10 |
| 8 | 15268 | |
| 9 | 21482 | 9 |
| 10 | 12478 | Cinghia compressore - C.P 60 |
| 11 | 80263 | Rondella larghissima ø 8 inox |
| 12 | 80269 | Rondella grower ø 8 |
| 13 | 11545 | Vite THEF 8 x 35 inox |

| Pos. | Référence | Désignation |
|-------------|------------------|---|
| 14 | C20569 | Gomito entrata aria compressore - C.P 60 |
| 15 | 80268 | Rondella grower ø 6 - C.P 60 |
| 16 | 12764 | Vite testa cilindrica 6 x 60 |
| 17 | 10727 | |
| 18 | 15228 | Vite a testa cava con punta piatta 6 x 35 |
| 19 | 10038 | Dado M 6 |
| 20 | 30291 | Rondella larga ø 6 |
| 21 | C20813 | Deflettore aria compressore - C.P 60 |
| 22 | 30330 | Dado a calotta M 6 Inox |