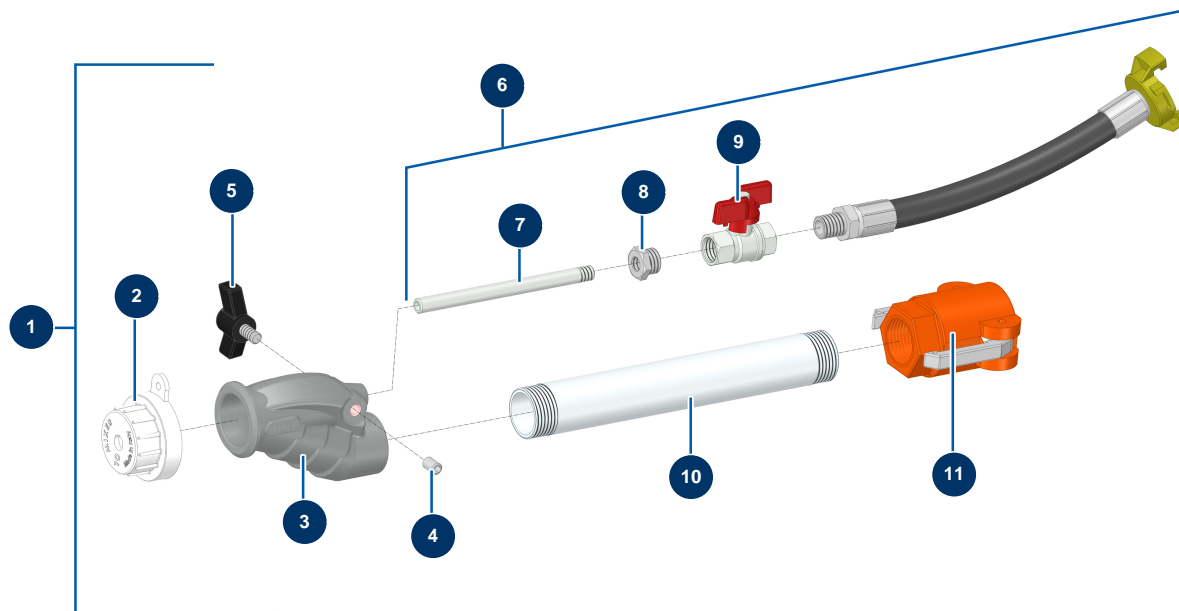


MIXPRO 28 - 3 kW complete plaster continuous mixing machine - Spraying lance



Détails des pièces

| Pos. | Référence | Désignation |
|------|--------------|---|
| 1 | MI8010003005 | MIXER standard Aluminium Lance |
| 2 | MI3F00200101 | White spraying nozzle Ø 10 80SH |
| 3 | MI4916001000 | Mixer straight lance head |
| 4 | 14151 | 8 x 12 stainless steel socket head screw with flat tip |
| 5 | MI3T01505001 | Mixer black Eye bolt diam 8 |
| 6 | MI8010100001 | Mixer aluminium standard spray lance air regulation kit |
| 7 | MI4907402000 | Outer threaded air injector |
| 8 | MI3G50300102 | 8 |
| 9 | MI3G01300103 | 9 |
| 10 | MI4907441001 | 230 mm extension outer threaded tube |
| 11 | MI3A00300241 | 1" camlock polypro coupling, inner threaded 1" |