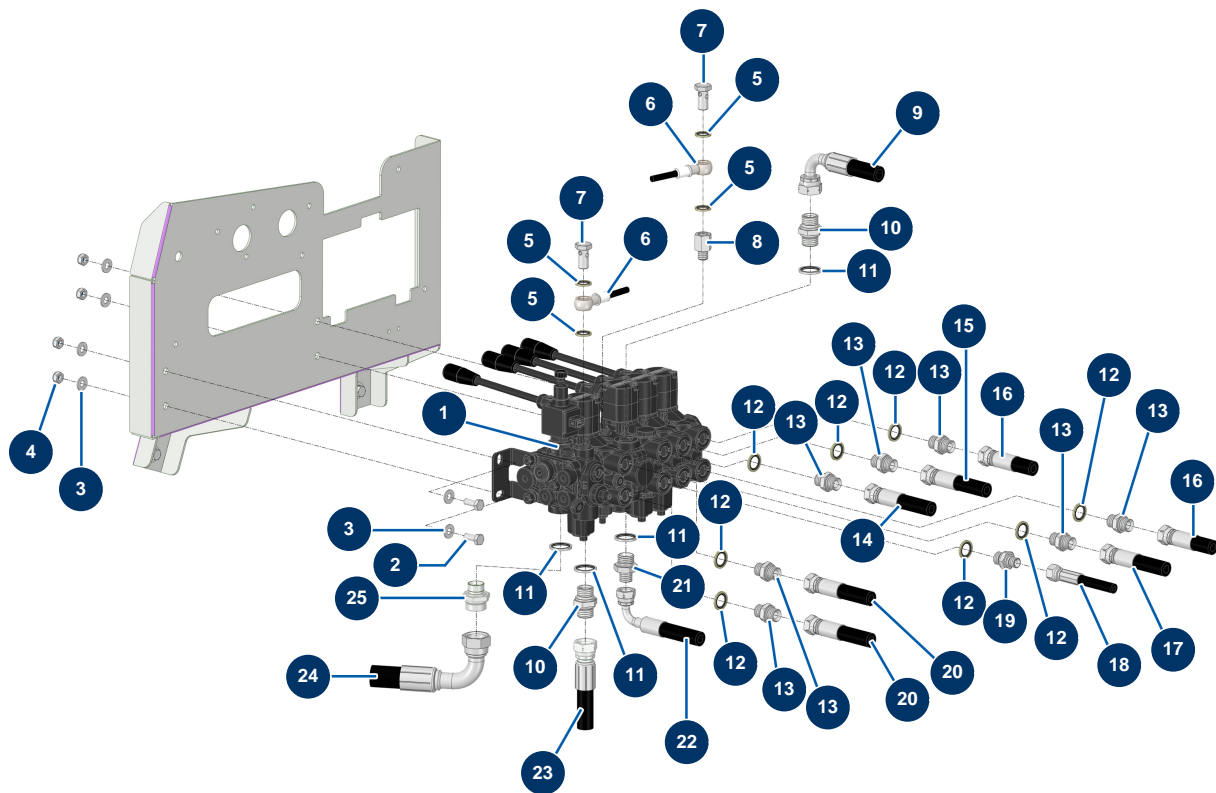


X-PRO D60 V2 spraying machine - Hydraulic control block support



Détails des pièces

| Pos. | Référence | Désignation |
|------|-----------|---|
| 1 | 12332 | 5-way distributor with LP and integrated hopper Bypass - C.P 60 |
| 2 | 30273 | THEF 8 x 20 screw |
| 3 | 80260 | ø 8 inox medium washer |
| 4 | 13980 | M 8 nylstop inox nut |
| 5 | 91016 | Steel gasket for hollow screw with 1/4 lip |
| 6 | 13027 | Manometer hose 400 mm 1/4"F (mano) x 1 banjo Ø 14 mm - C.P 60 |
| 7 | 90863 | 1/4 drilled head screw |
| 8 | 12667 | 1/4" MaleC x 1/4" FemaleD high-pressure nipple |
| 9 | 15394 | |
| 10 | 90627 | 1/2" MaleD x 1/2" MaleD high-pressure nipple |
| 11 | 91032 | Steel gasket for hollow screw with 1/2" lip |
| 12 | 91031 | Steel gasket for hollow screw with 3/8 lip |
| 13 | 90698 | 3/8" MaleD x 3/8" MaleD high-pressure nipple |

| Pos. | Référence | Désignation |
|------|-----------|--|
| 14 | 15392 | |
| 15 | 15272 | |
| 16 | 15385 | |
| 17 | 15271 | |
| 18 | 15386 | |
| 19 | 90704 | 1/4" MaleD x 3/8" MaleD high-pressure nipple |
| 20 | 15262 | |
| 21 | 80338 | 3/8" MaleC x 1/2" MaleD high-pressure nipple |
| 22 | 15393 | |
| 23 | 15263 | |
| 24 | 15264 | |
| 25 | 12733 | 1/2" MaleD x 3/4" MaleD high-pressure nipple |