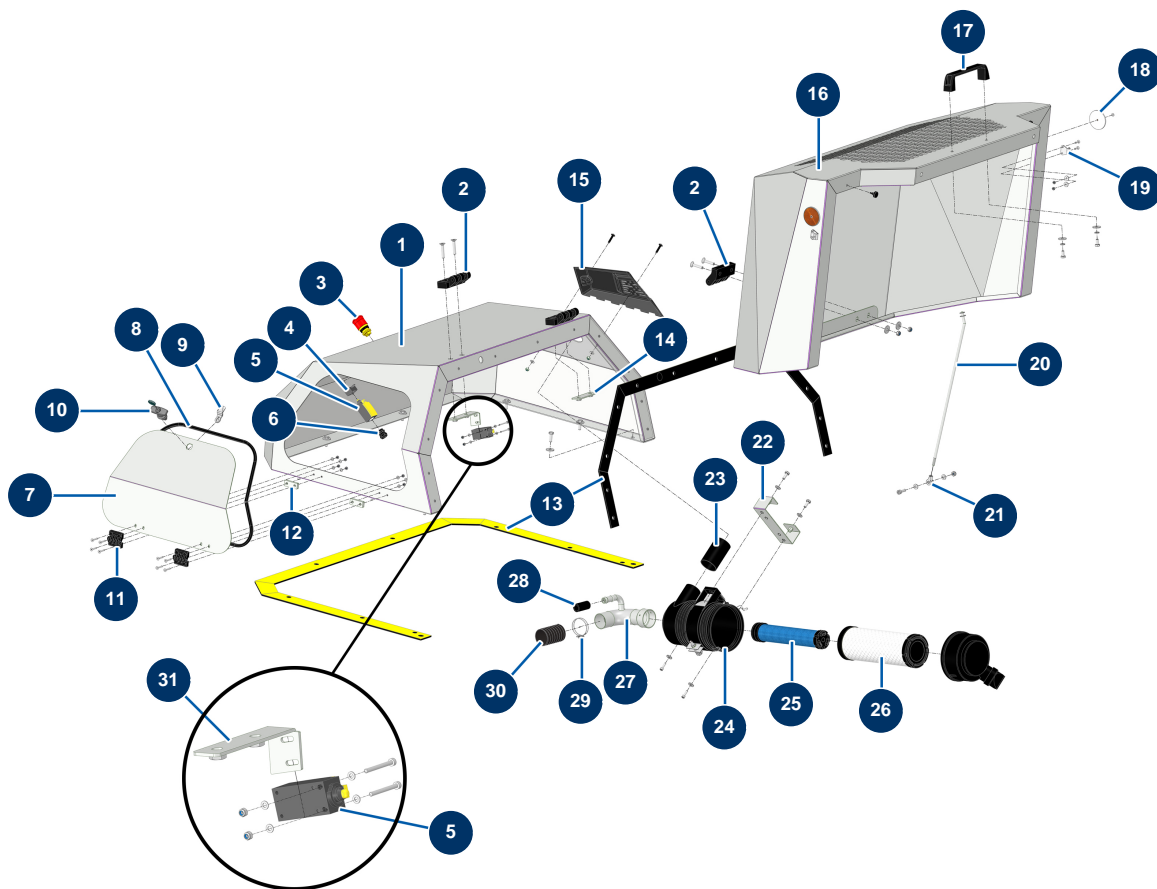


X-PRO D80 V2 spraying machine - Bodywork



Détails des pièces

Pos.	Référence	Désignation
1	C23743C	1
2	12797	Hood hinge - C.P 60
3	90727	Hook emergency stop button - CP 60
4	12664	Security switch adapter / emergency stop button - C.P 60
5	12663	Push safety switch - C.P. 60
6	80448	M 20 waterproof cable gland
7	C24123	
8	15512	Side bubble profile seal for waterproofing, sold by the meter
9	15514	T-handle cam for X-PRO hatch
10	15513	T-handle with X-PRO hatch key
11	13036	
12	C24136	12
13	15526	

Pos.	Référence	Désignation
14	C23738	14
15		15
16	C23756	
17	1042523	CP 60 grid handle
18	12361	Round & orange reflector - C.P 60
19	15022	Adjustable toggle locking hook
20	C23859	
21	13240	
22	C23746C	
23	C23744C	
24	30761	Complete Donaldson cyclonic air filter for KOHLER KDW 1003 & 1404 engine
25	30763	Donaldson filter safety air cartridge for KOHLER KDW 1003 & 1404 motors
26	30762	Donaldson filter standard air cartridge for KOHLER KDW 1003 & 1404 motors
27	C22280	
28	10727	
29	12723	Double wire clamp ø 56 x 65 - CP 60
30	12538	PVC GAS sheath Ø 50 by the metre - C.P 60
31	C24070C	