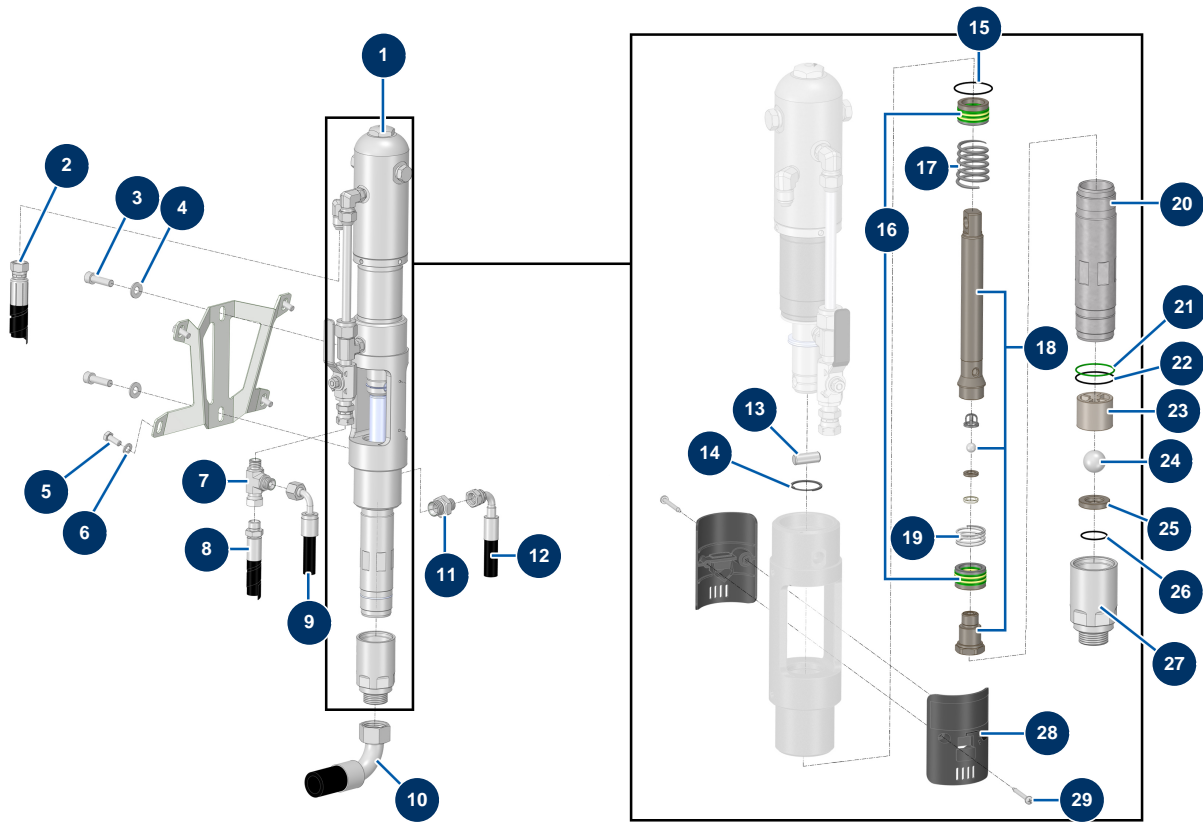


HYDROLINE L airless marking machine - Paint pump



Détails des pièces

| Pos. | Référence | Désignation |
|------|-----------|---|
| 1 | 51402 | 1 |
| 2 | 51436 | |
| 3 | 12521 | 10 x 35 cylindrical head screw |
| 4 | 80261 | ø 10 inox medium washer |
| 5 | 30273 | THEF 8 x 20 screw |
| 6 | 30256 | ø 8 inox narrow washer |
| 7 | 20104 | 3/8" MaleD x 3/8" MaleD x 3/8" revolving Female high-pressure T |
| 8 | 51437 | |
| 9 | 51503 | |
| 10 | 51509 | |
| 11 | 90872 | 1/2" MaleD x 3/8" MaleD high-pressure nipple |
| 12 | 51439 | |
| 13 | 15167 | Hydraulic pump locking pin 6/12L |

| Pos. | Référence | Désignation |
|------|-----------|---------------------------------|
| 14 | 15166 | |
| 15 | 15168 | O-ring for 6/12L hydraulic pump |
| 16 | 15181 | Gasket kit hydraulic pump 6/12L |
| 17 | 15170 | |
| 18 | 15171 | |
| 19 | 15524 | |
| 20 | 15174 | |
| 21 | 15175 | O-ring for 6/12L hydraulic pump |
| 22 | 15176 | O-ring for 6/12L hydraulic pump |
| 23 | 15177 | |
| 24 | 15178 | |
| 25 | 15179 | |
| 26 | 15521 | O-ring for 6/12L hydraulic pump |
| 27 | 15180 | |
| 28 | 15520 | |
| 29 | 15519 | |