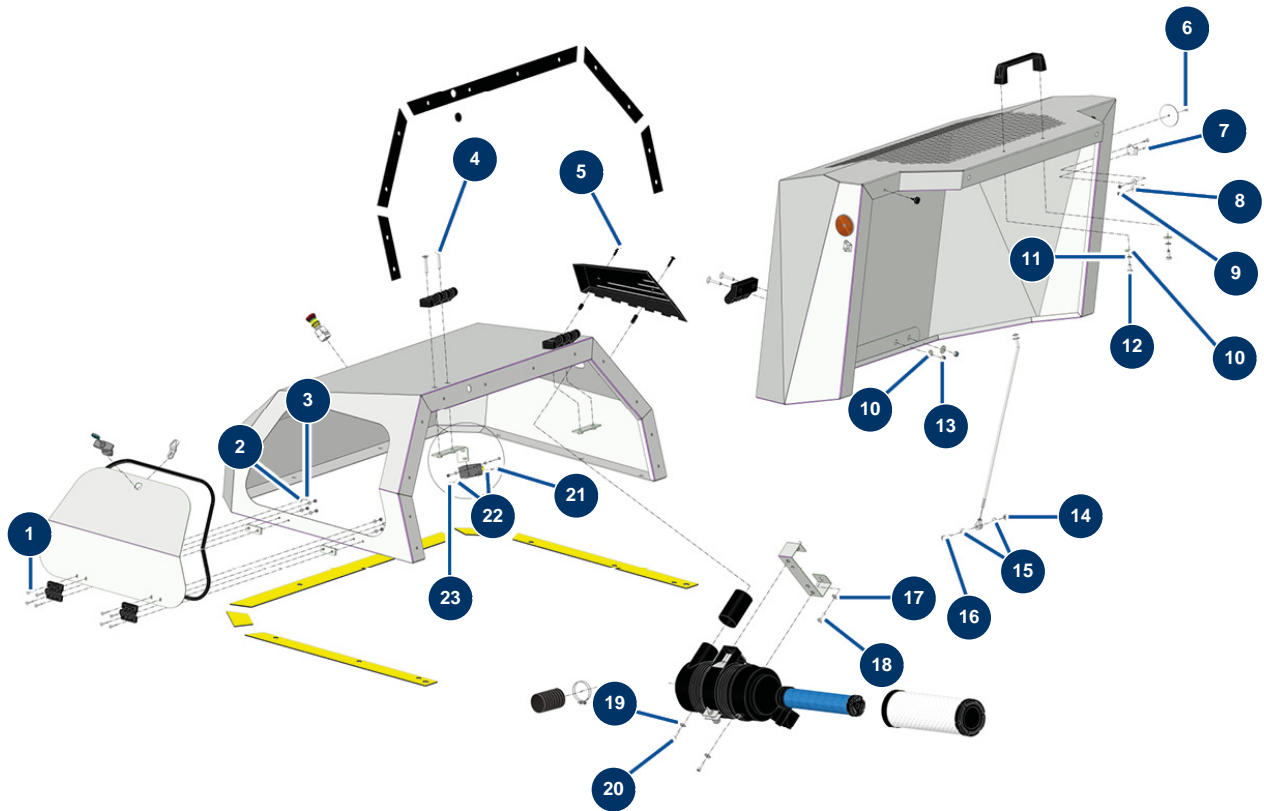


X-PRO D140 V2 liquid screed machine - Bodywork (screws and bolts)



Détails des pièces

Pos.	Référence	Désignation
1	12121	5 x 25 countersunk head screw
2	70085	ø 5 narrow washer
3	11880	M 5 nylstop nut
4	13620	8 x 45 countersunk head screw
5	15499	
6	12463	ø 5 x 16 aluminium POP rivet
7	90130	5 x 16 countersunk head screw
8	30290	ø 5 large washer
9	70086	M 5 nylstop inox nut
10	30292	ø 8 inox large washer
11	80269	Grower washer ø 8
12	30295	THEF 8 x 16 screw
13	90127	M 8 nylstop nut

Pos.	Référence	Désignation
14	13980	M 8 nylstop inox nut
15	30256	∅ 8 inox narrow washer
16	12783	8 x 25 cylindrical head screw
17	80260	∅ 8 inox medium washer
18	30273	THEF 8 x 20 screw
19	30291	∅ 6 large washer
20	90996	6 x 20 inox cylindrical head screw
21	11403	4 x 40 cylindrical head screw
22	30267	∅ 4 inox narrow washer
23	30266	M 4 nylstop nut