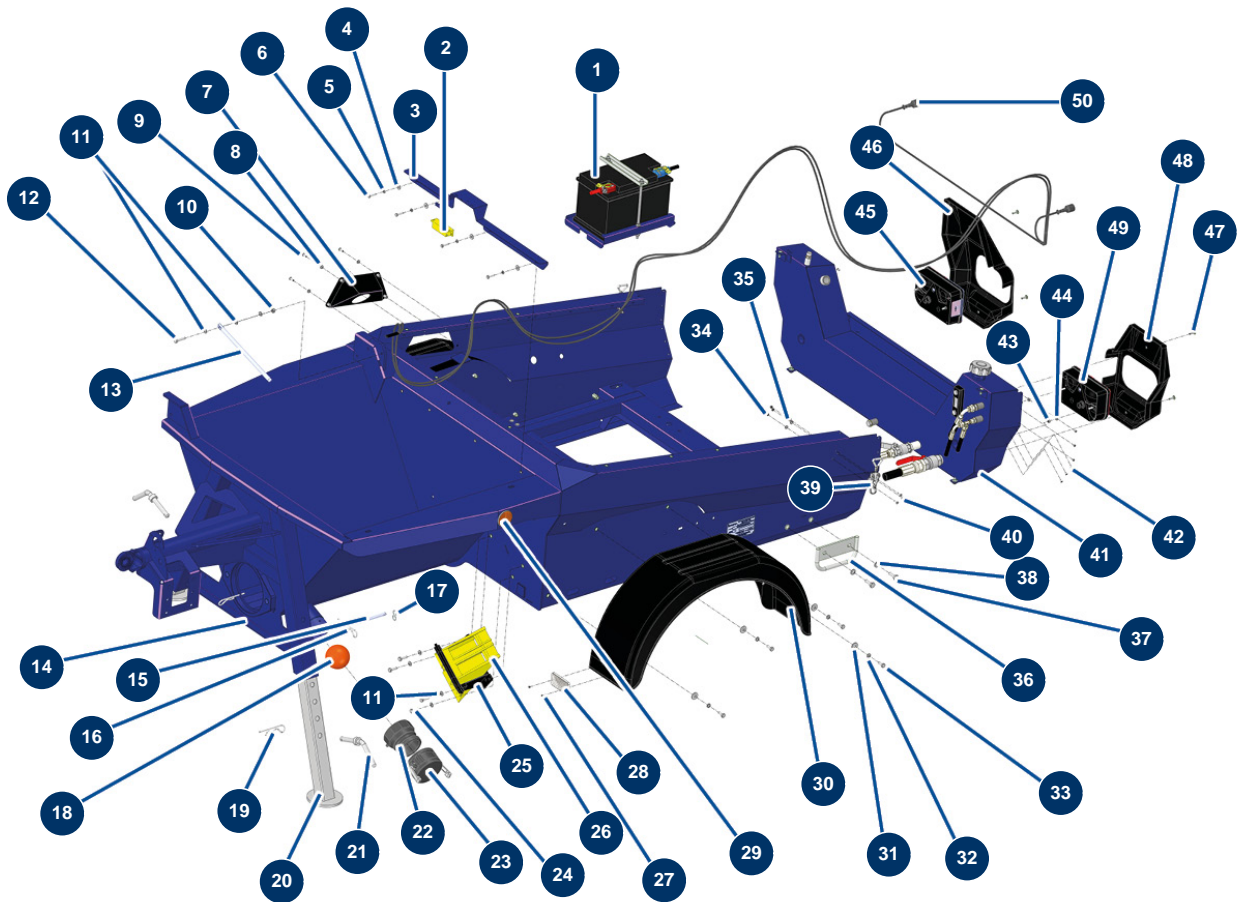


## X-PRO D140 V2 liquid screed machine - Chassis



### Détails des pièces

Pos.	Référence	Désignation
1	C23982	1
2	12120	Grid safety sensor for JETMIX, MIXPRO 14, 70 & 100
3	C23222	3
4	30291	ø 6 large washer
5	80268	Grower washer Ø 6 - C.P 60
6	14218	THEF 6 x 25 inox screw
7	C23221	7
8	70087	ø 6 inox narrow washer
9	11145	6 x 16 inox cylindrical pan head screw
10	90127	M 8 nylstop nut
11	30256	ø 8 inox narrow washer
12	11545	THEF 8 x 35 inox screw
13	20705	13

Pos.	Référence	Désignation
14	C30045	14
15	20060	
16	12157	Beta pin Ø 4.5 x 70
17	20045	S-shaped hook 40 x 4 mm
18	20048	Cleaning ball ø 100
19	20046	4 mm R pin
20	C23023	20
21	20236	Support leg pin X-PRO D
22	13172	Polypro 3" threaded adapter - C.P 60
23	13171	Polypro 3" female cam plug - C.P 60
24	11544	THEF 8 x 25 screw
25	20214	X-PRO black wheel chock holder
26	20213	X-PRO D140 yellow plastic wheel chock
27	14790	ø 4 x 14 aluminium POP rivet
28	15260	Triangular red reflector
29	12361	Round & orange reflector - C.P 60
30	20212	X-PRO D200 & X-SCREED plastic mudguard
31	30292	ø 8 inox large washer
32	80269	Grower washer ø 8
33	30273	THEF 8 x 20 screw
34	11880	M 5 nylstop nut
35	11737	ø 5 inox medium washer
36	C20976	Chassis docking support CP 60 version 7.13
37	30258	THEF 10 x 30 screw
38	30280	ø 10 inox narrow washer
39	15021	Adjustable toggle without hook
40	90130	5 x 16 countersunk head screw
41	20853	41
42	80272	42
43	90775	M 5 nut
44	30290	ø 5 large washer
45	12803	Complete right rear lights - C.P 60
46	20819	
47	20363	47

<b>Pos.</b>	<b>Référence</b>	<b>Désignation</b>
48	20818	
49	12802	Complete left rear lights - C.P 60
50	12801	Complete lighting wiring harness 3.5 m - C.P 60