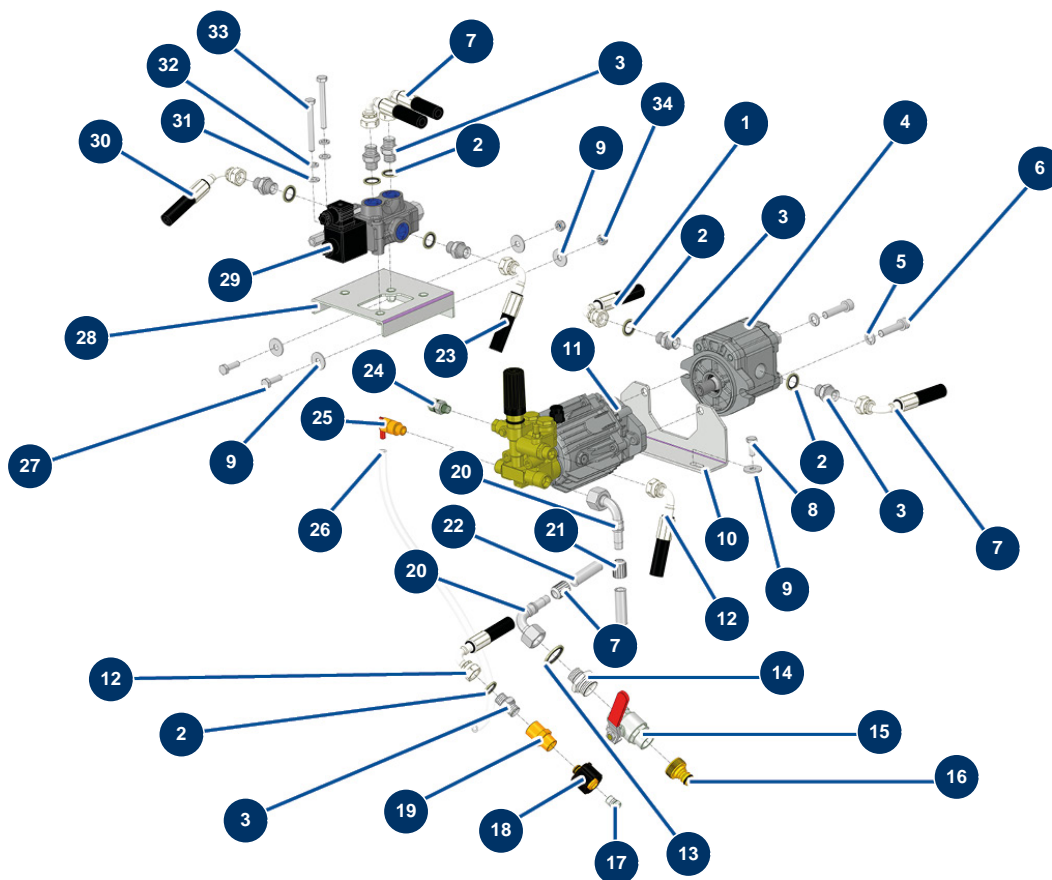


## X-PRO D140 V2 liquid screed machine - High-pressure washer - Water meter



### Détails des pièces

Pos.	Référence	Désignation
1	20856	1
2	91031	Steel gasket for hollow screw with 3/8 lip
3	90698	3/8" MaleD x 3/8" MaleD high-pressure nipple
4	12406	Washer 6 cc single-direction hydraulic motor - CP 60
5	80270	Grower washer ø 10
6	12522	10 x 40 cylindrical head screw
7	20855	7
8	30273	THEF 8 x 20 screw
9	30292	ø 8 inox large washer
10	C23208	10
11	90352	Pump 11 litres 140 bar - C.P 60
12	20838	12
13	12573	Steel gasket for 3/4" hollow screw with lip

Pos.	Référence	Désignation
14	12733	1/2" MaleD x 3/4" MaleD high-pressure nipple
15	90012	Red handle valve M3/4" x F3/4"
16	80124	Inner threaded 3/4" quick connector
17	90842	1/4" high-pressure MaleC plug
18	90326	M22-150 x 1/4 F female C quick fit attachment
19	90336	L M22-150 M x 3/8 F male quick fit attachment
20	10197	20
21	10210	19 MAS sleeve
22	10229	ø 12 galvanised braided hose
23	20857	23
24	20123	
25	13101	1/4" thermostatic valve
26	90541	Clear air hose Ø 6 by the metre
27	11544	THEF 8 x 25 screw
28	C30063	28
29	20132	OMS 125 hydraulic motor
30	20854	30
31	30256	ø 8 inox narrow washer
32	80269	Grower washer ø 8
33	20262	THEF 8 x 70 screw
34	90127	M 8 nylstop nut