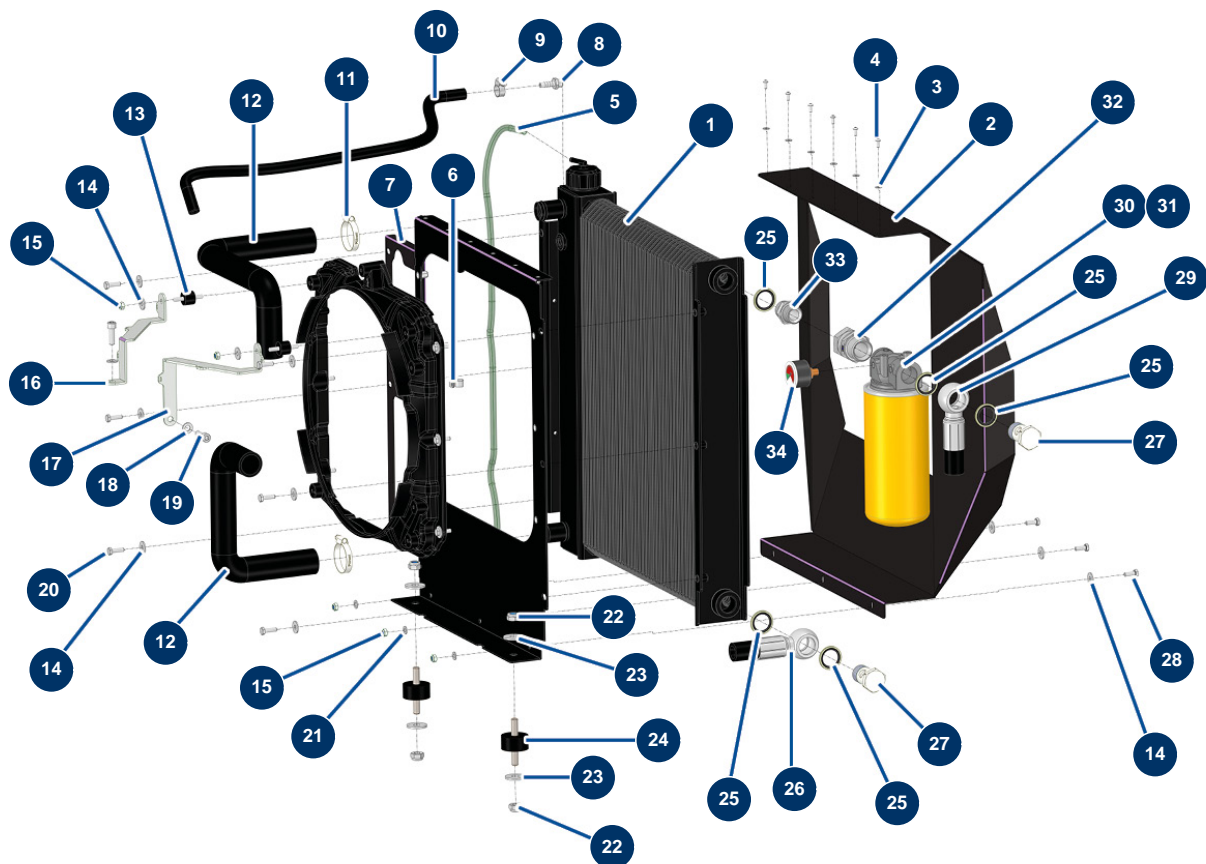


X-PRO D140 V2 liquid screed machine - Radiator



Détails des pièces

| Pos. | Référence | Désignation |
|------|-----------|---|
| 1 | 14680 | Engine/Hydraulic oil cooler RL 2021 - CP 60 |
| 2 | C23837 | |
| 3 | 11736 | ø 4 inox medium washer |
| 4 | 15152 | 4 x 10 inox cylindrical pan head screw |
| 5 | 90541 | Clear air hose Ø 6 by the metre |
| 6 | 20232 | 6 |
| 7 | C30055 | 7 |
| 8 | 20405 | |
| 9 | 20247 | 8-16 mm collar |
| 10 | 13595 | Cooling liquid hose ø 10 x 17 per metre - CP 60 |
| 11 | 20242 | 25-40 mm collar |
| 12 | 15565 | |
| 13 | 30147 | Silentbloc ø 20 x 15 M6 for Compact-pro 30 |

| Pos. | Référence | Désignation |
|------|-----------|--|
| 14 | 30291 | ø 6 large washer |
| 15 | 20004 | M 6 nylstop nut |
| 16 | C30061 | 16 |
| 17 | C30060 | 17 |
| 18 | 30256 | ø 8 inox narrow washer |
| 19 | 12783 | 8 x 25 cylindrical head screw |
| 20 | 14539 | THEF 6 x 20 screw |
| 21 | 70087 | ø 6 inox narrow washer |
| 22 | 60013 | M 10 nylstop nut |
| 23 | 30293 | ø 10 inox large washer |
| 24 | 30150 | Silentbloc ø 40 x 20 M10 |
| 25 | 12573 | Steel gasket for 3/4" hollow screw with lip |
| 26 | 20852 | 26 |
| 27 | 14733 | 3/4 BP drilled head screw |
| 28 | 14733 | 3/4 BP drilled head screw |
| 29 | 20863 | 29 |
| 30 | 15305 | |
| 31 | 15308 | 31 |
| 32 | 20841 | 32 |
| 33 | 90774 | 3/4" MaleD x 3/4" MaleD high-pressure nipple |
| 34 | 15306 | |