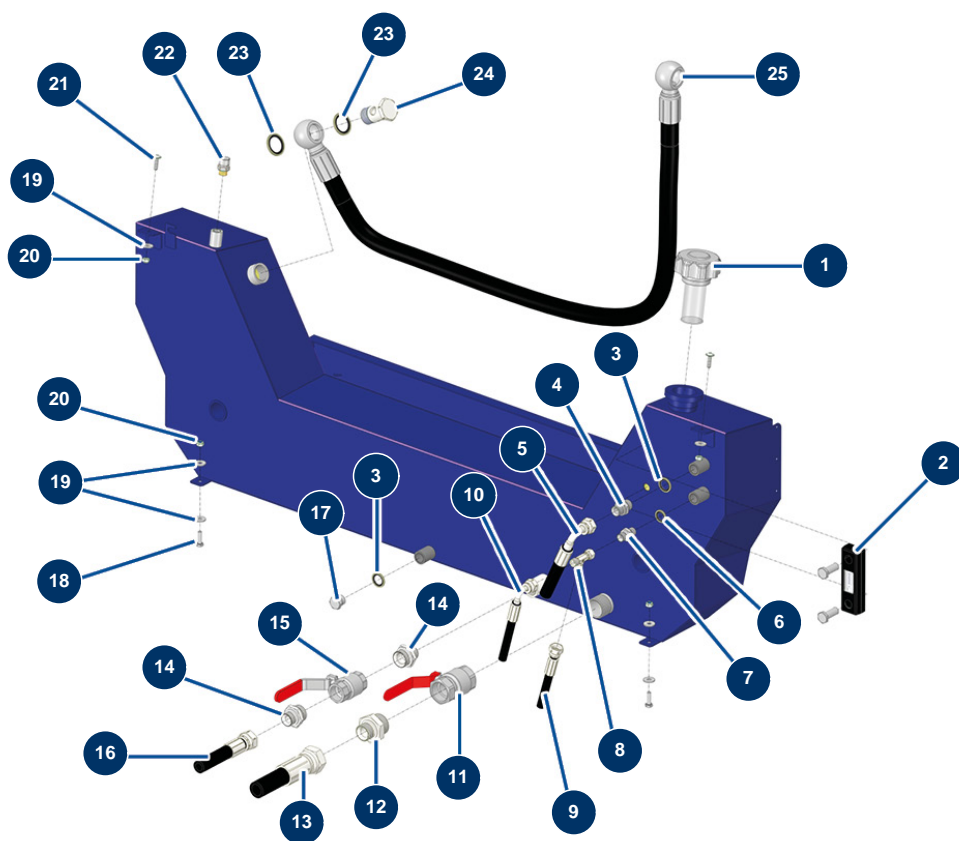


## X-PRO D140 V2 liquid screed machine - Hydraulic tank



### Détails des pièces

Pos.	Référence	Désignation
1	15321	
2	12326	Visual level of hydraulic tank - CP 60
3	91031	Steel gasket for hollow screw with 3/8 lip
4	90698	3/8" MaleD x 3/8" MaleD high-pressure nipple
5	20857	5
6	91016	Steel gasket for hollow screw with 1/4 lip
7	90703	1/4" MaleD x 1/4" MaleD high-pressure nipple
8	20103	1/4" MaleD x 1/4" MaleD x 1/4" revolving Female high-pressure T
9	20860	9
10	20851	10
11	70031	Drain valve for EUROPRO 4-6-8-14 P, MPE, AG, 7000z, 9000z
12	12569	3/4" MaleD x 1" MaleD high-pressure nipple
13	20850	13

Pos.	Référence	Désignation
14	12733	1/2" MaleD x 3/4" MaleD high-pressure nipple
15	11382	Red handle valve F3/4" x F3/4"
16	20853	16
17	90238	3/8" low-pressure male plug
18	14539	THEF 6 x 20 screw
19	30291	ø 6 large washer
20	20004	M 6 nylstop nut
21	20363	21
22	12504	
23	12573	Steel gasket for 3/4" hollow screw with lip
24	14733	3/4 BP drilled head screw
25	20863	25