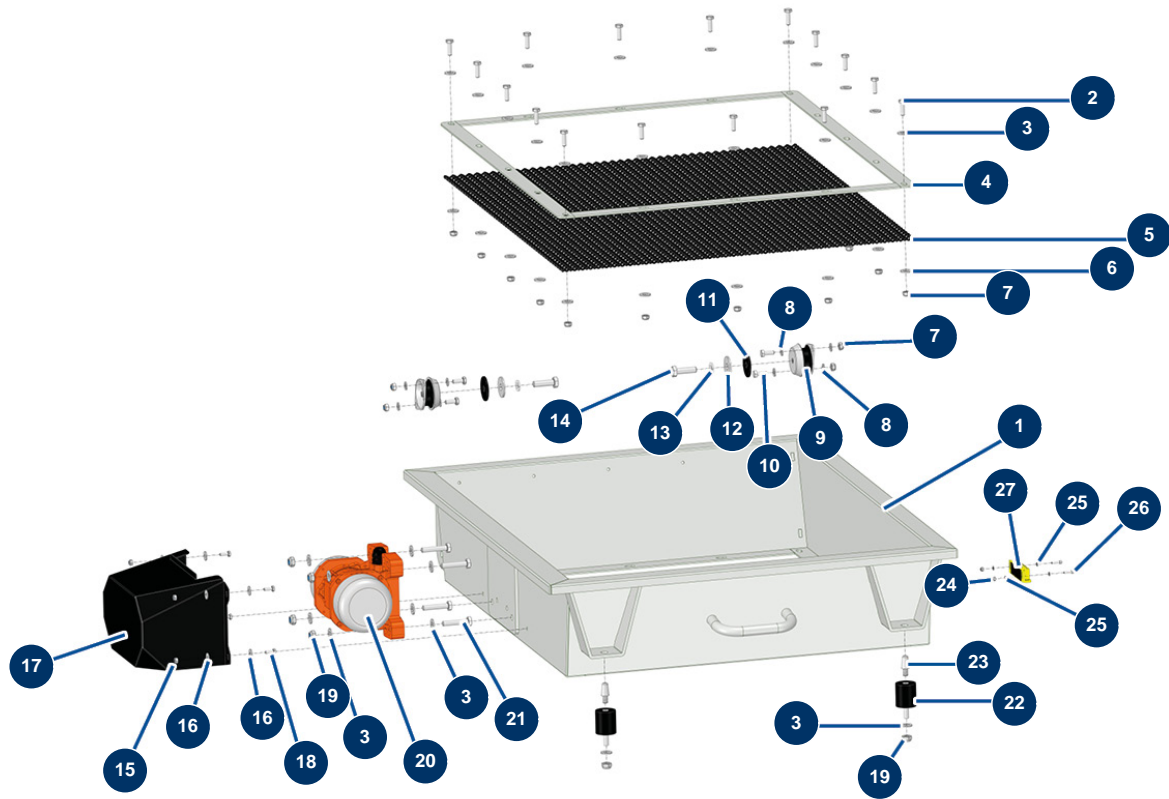


X-PRO D140 V2 liquid screed machine - Vibrating sieve



Détails des pièces

Pos.	Référence	Désignation
1	C23020	1
2	20674	2
3	80261	ø 10 inox medium washer
4	C23022	
5	C23080	12 x 12 x 4 grid for X-PRO D140 and D200 vibrating sieve
6	30292	ø 8 inox large washer
7	13980	M 8 nylstop inox nut
8	30256	ø 8 inox narrow washer
9	20230	Silentbloc for X-PRO D motor plate + sieve
10	30273	THEF 8 x 20 screw
11	20714	11
12	30294	ø 12 inox large washer
13		13

Pos.	Référence	Désignation
14	12928	THEF 12 x 40 screw
15	14217	M 6 nylstop inox nut
16	30291	ø 6 large washer
17	C22874	17
18	12069	THEF 6 x 16 screw
19	13981	M 10 nylstop inox nut
20	20075	12VDC MVE200/3N vibrator
21	30260	THEF 10 x 50 screw
22	20172	Silentbloc ø 40 x 45 M-F10
23	20052	Conical pin 24 x 12/16 mm M10
24	30266	M 4 nylstop nut
25	30267	ø 4 inox narrow washer
26	90137	4 x 16 cylindrical head screw
27	12980	Hopper and mixer safety grid sensor - C.P 60