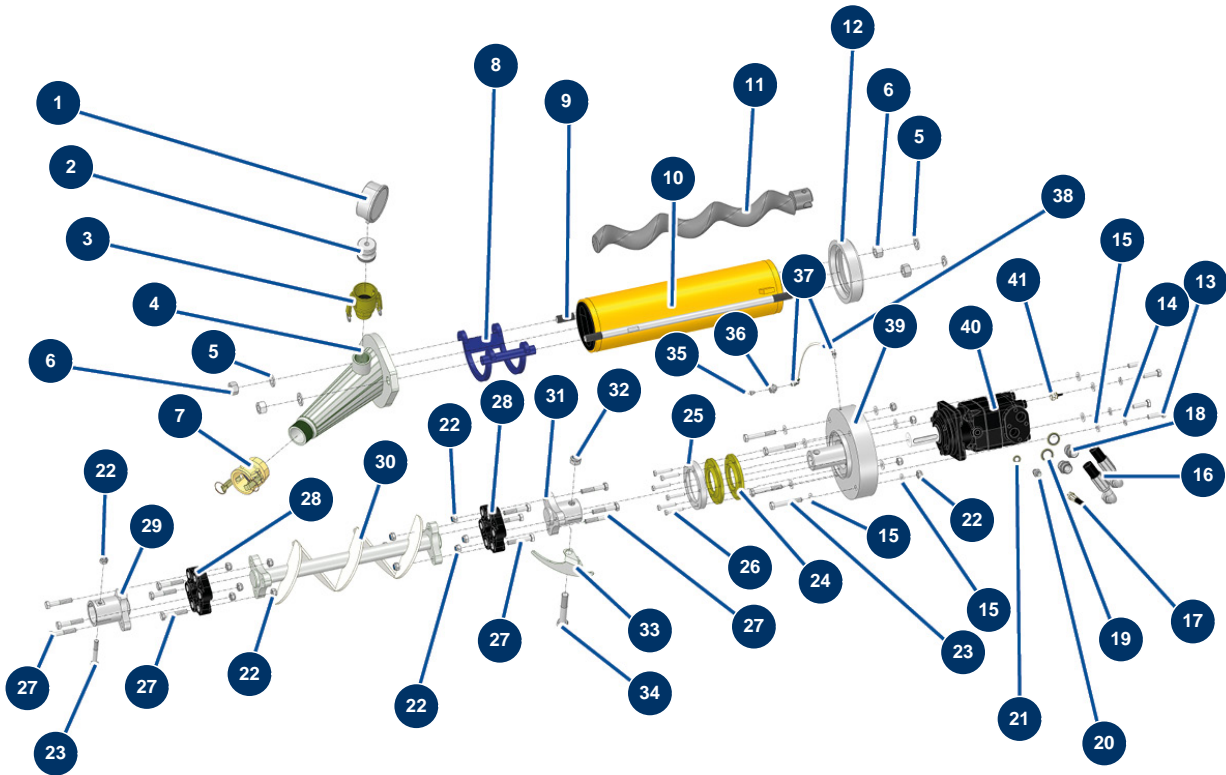


X-PRO D140 V2 liquid screed machine - Transmission



Détails des pièces

Pos.	Référence	Désignation
1	20154	Oil radial manometer 1/2" conical 100 mm - 0 to 60 bar
2	20062	X-PRO machine manometer adapter
3	20070	1"1/4 camlock steel coupling, outer threaded 1"1/4
4	C23089	
5	10141	ø 20 inox narrow washer
6	12473	M 20 nut
7	12364	2" camlock steel coupling, inner threaded 2" - CP 60
8	C22875	8
9	M10281	595 mm fastening tie rod for CP 60
10	MI3F00508400	MIXER 60R12 SX pump stator with anti-rotation
11	MI7009200000	MIXER 60R12 pump rotor
12	20061	
13	20788	13

Pos.	Référence	Désignation
14	12462	Grower washer ø 12
15	30281	ø 12 inox narrow washer
16	20862	16
17	20860	17
18	90774	3/4" MaleD x 3/4" MaleD high-pressure nipple
19	12573	Steel gasket for 3/4" hollow screw with lip
20	90703	1/4" MaleD x 1/4" MaleD high-pressure nipple
21	91016	Steel gasket for hollow screw with 1/4 lip
22	10051	M 12 nylstop nut
23	12442	12 x 80 THPF screw
24	20058	X-PRO machine tank bottom gasket
25	20059	X-PRO machine seal flange
26	11798	THEF 8 x 45 screw
27	20038	12 x 65 THPF screw
28	14661	Transmission shaft elastic coupling - X-PRO D140
29	20055	X-PRO machine rotor coupling
30	20054	X-PRO D140, CP 55 & 100 tank bottom drive shaft
31	20053	X-PRO machine motor coupling
32	20039	M 18 nylstop nut
33	C22881	
34	20040	18 x 100 THPF screw
35	20044	1/8" M straight lubricator
36	20159	
37	30124	Corrugated Legris coupling M1/8" Ø 6
38	30403	Calibrated polyurethane tube ø 4 x 6 black by the metre
39	20207	OMT 250 X-PRO D140 hydraulic motor flange
40	20206	OMT 250 X-PRO D140 hydraulic motor
41		41