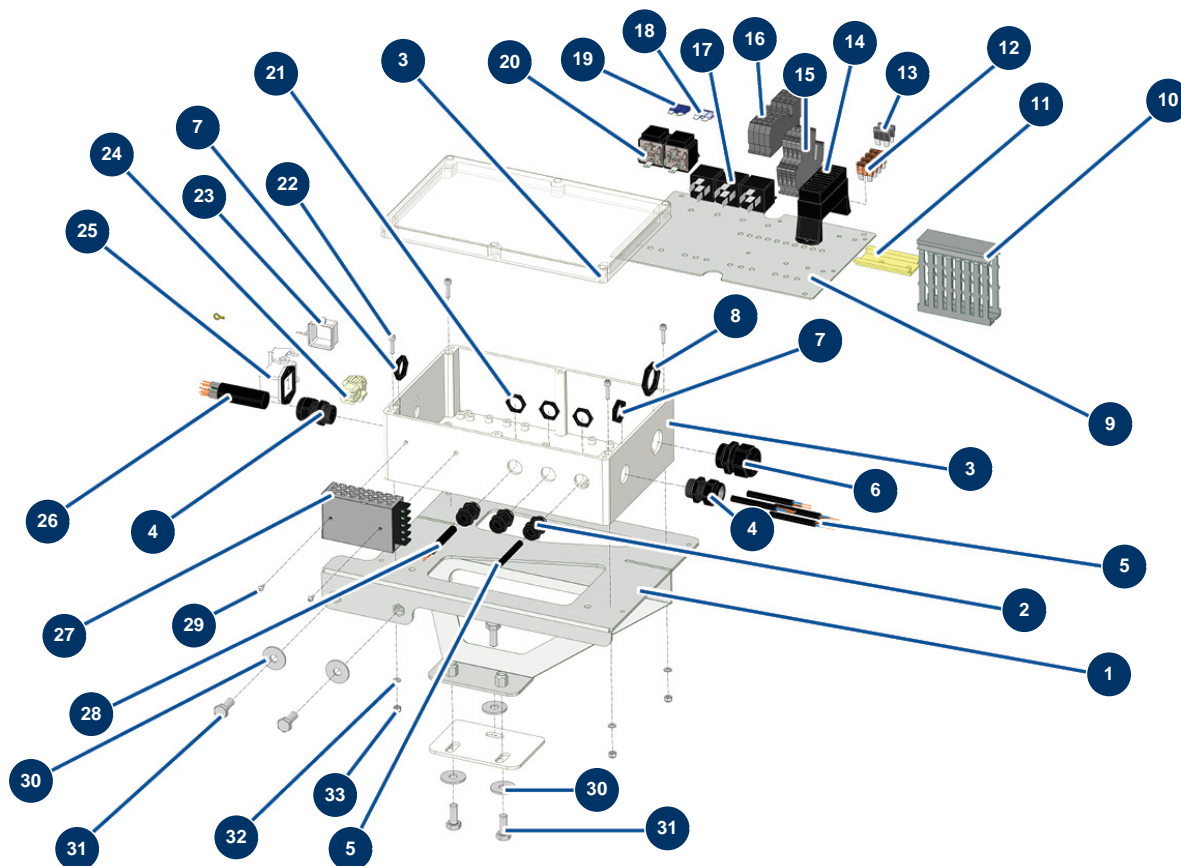


X-PRO D140 V2 liquid screed machine - Electrical box



Détails des pièces

Pos.	Référence	Désignation
1	C23774	1
2	80445	Watertight cable gland of M16
3	20228	250 x 160 x 90 plastic box with transparent lid
4	11622	Black plastic packing M 20
5	60156	H05VVF electrical cable 2x1 by the metre
6	13633	6
7	11197	M 20 cable gland nut
8	14447	M 25 CEM cable gland nut
9	20229	
10	20641	
11	50220	11
12	13080	Standard US 5A fuse - CP 60
13	13079	Standard US 2A fuse - CP 60

Pos.	Référence	Désignation
14	20702	14
15	20390	15
16	80482	Grey conductor block 6 mm ²
17	13108	C-shape 12V relay - C.P 60
18	20252	US 25A standard fuse
19	20251	US 15A standard fuse
20	20378	Relay 12V DC with fuse
21	11327	Cable gland locknut of M16
22	90137	4 x 16 cylindrical head screw
23	12535	2 PIV cover with MIXPRO 14 gasket
24	11914	Female insert 4p + G
25	12543	Insulating bend socket base 3p + G - 1 lever
26	20287	26
27	15072	12VDC / 24VDC transformer
28	14592	H07RNF electrical cable 2x2,5 by the metre
29	20361	29
30	30292	ø 8 inox large washer
31	30273	THEF 8 x 20 screw
32	30267	ø 4 inox narrow washer
33	30266	M 4 nylstop nut