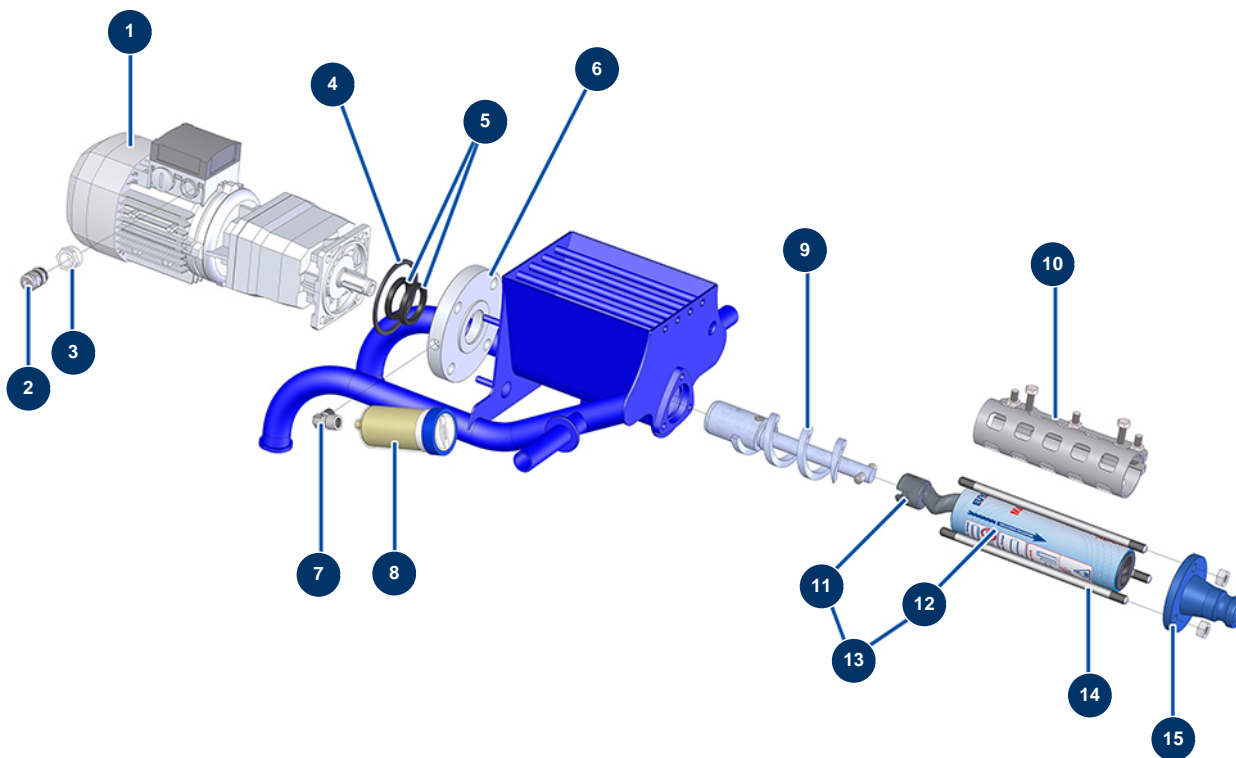


## COMPACT-PRO 10 JOINT spraying machine - Transmission



### Détails des pièces

Pos.	Référence	Désignation
1	90550	Geared motor 0,55 kW - T122 - R17,2 - 1400 rpm - 400V
2	30040	Nickel plated watertight cable gland of 11 CEM
3	80446	Cable gland reduction M 25-11
4	11456	AG, MPE machine motor flange gasket
5	70062	Spi seal 40 x 52 x 7 for 4,6,8P, AG, MPE, 7000z, 9000z
6	11576	Motor spacer flange for CP10, 15 & DECOPRO
7	30121	90° low-pressure elbow 1/4 MaleC x 1/4 FemaleD
8	90639	Automatic greaser
9	C20284	Complete drive shaft for CP 10
10	C21265	MAP 3 clamping jacket - 8P
11	MI7009107800	EUROPRO MAP 3 pump rotor with bayonet head
12	MI3F00528900	EUROPRO MAP 3-60SH 3 slits pump stator
13	30863	EUROPRO MAP 3 pump adjustable rotor/stator kit

<b>Pos.</b>	<b>Référence</b>	<b>Désignation</b>
14	10034	Fixation tie rod for MAP 2/3
15	10015	EUROPRO 4 and 6 P stator clamp blue