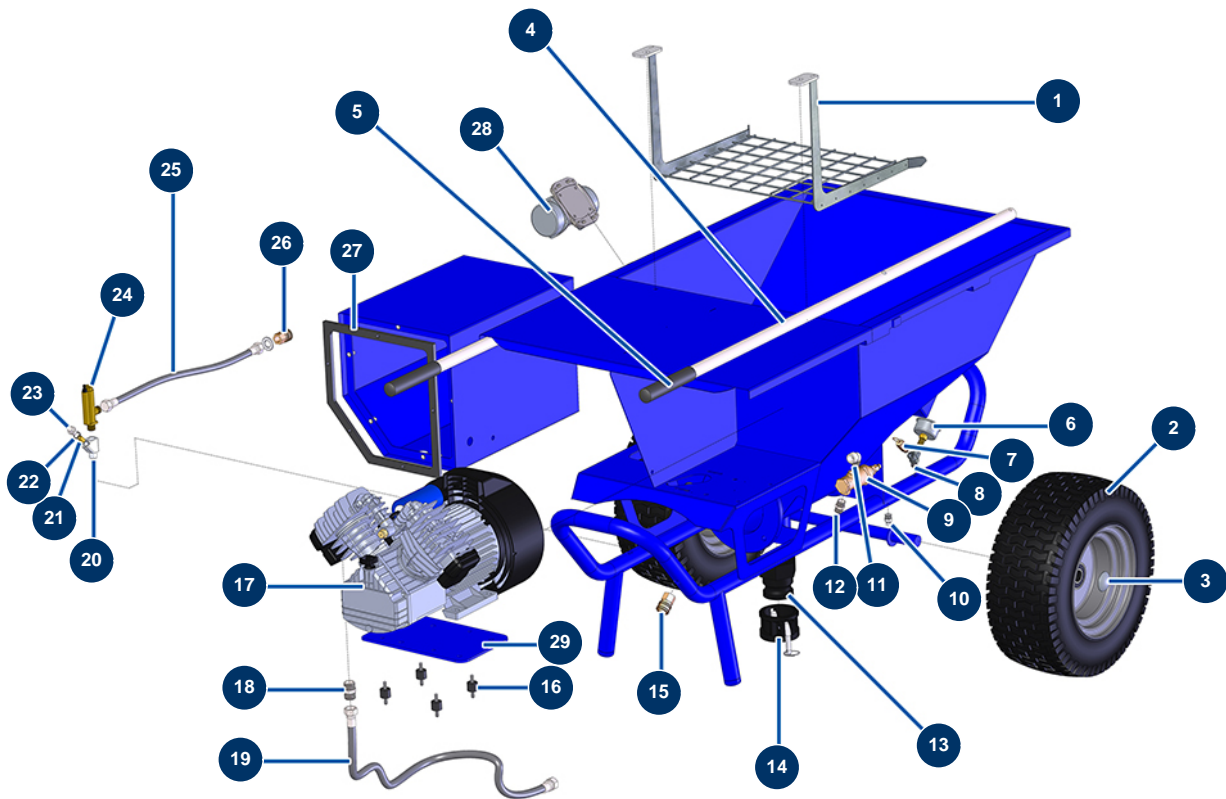


## COMPACT-PRO 35 spraying machine - Chassis



### Détails des pièces

Pos.	Référence	Désignation
1	11379	COMPACT-PRO 30, 35, 40 & 50 machine safety grid
2	80372	Complete Ø410 wheel with bearing - axle of 25
3	90282	Ø25 chromed clip
4	11380	COMPACT-PRO 30 machine arm - old model
5	90255	Arm handle for EUROPRO 24P, E50 and E100
6	80028	1/4 conical axial manometer - 50mm - 0 to 20 bar
7	80097	1/4" certified outer threaded safety valve 11 bar
8	30123	Low pressure Y - M1/4" x F1/4" x F1/4"
9	01015	9
10	30133	1/4" male compressor tank purge
11	30120	Elbow BP 90° 3/8 MaleC x 3/8 FemaleD
12	30367	3/8" MaleC x 3/8" MaleC low-pressure nipple
13	11396	POLYPRO 2" inner threaded adapter for COMPACT-PRO 30

Pos.	Référence	Désignation
14	11397	POLYPRO 2" female plug with cams for COMPACT-PRO 30
15	70034	3/8" outer threaded female quick connector
16	30147	Silentbloc ø 20 x 15 M6 for Compact-pro 30
17	30154	Compression head for EUROPRO 30 and 30+
18	30369	1/2" MaleC x 1/2" MaleC low-pressure nipple
19	11341	COMPACT-PRO 30 & 40 compressor outlet air hose
20	M10322	Filter body for spraying machine
21	12502	50 meshes hopper filter
22	032095	22
23	M10323	Spraying machine filter body plug
24	30005	Flowmeter for EUROPRO 4-6-8-14 and 24 P
25	11340	MORTAR machine flow meter air hose
26	70035	3/8" inner threaded female quick fit coupling
27	11361	EUROPRO COMPACT-PRO 30 electric box gasket
28	11997	Single vibrator - 230V
29	C20440	CP 35 hopper compressor support plate