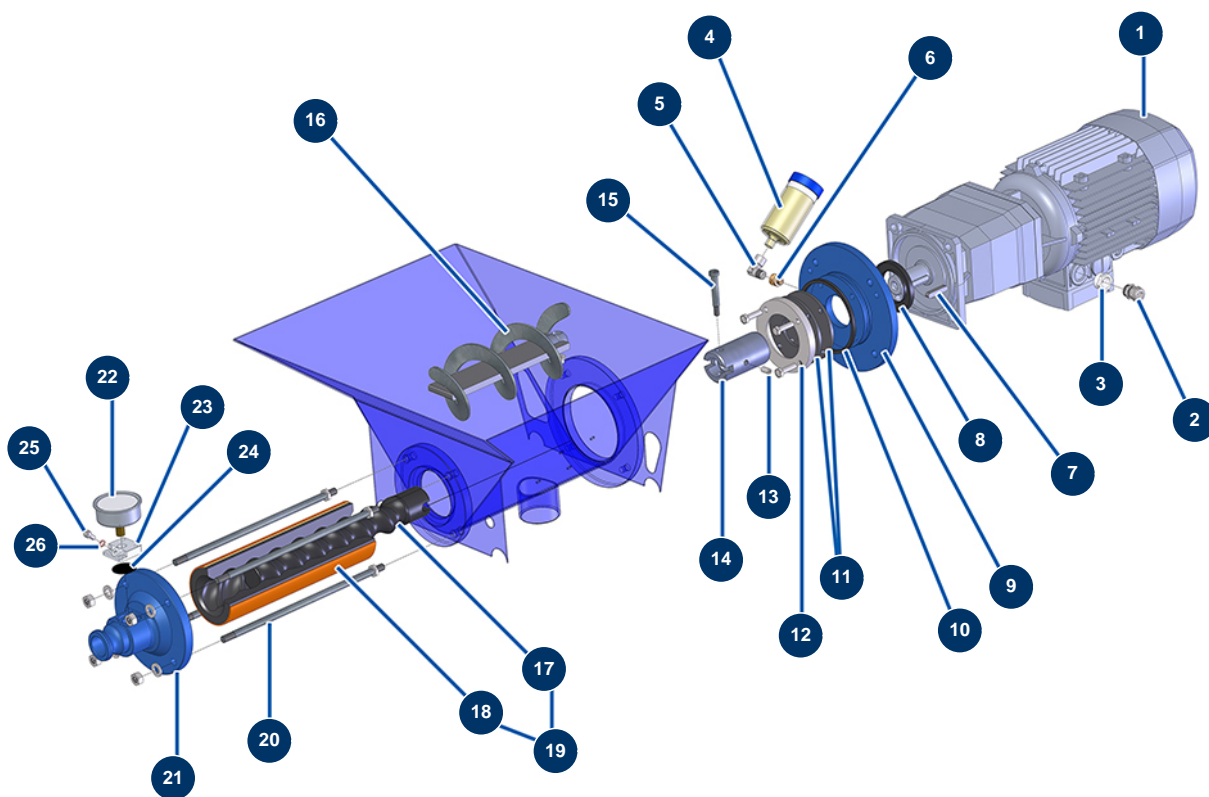


## COMPACT-PRO 35 spraying machine - Transmission



### Détails des pièces

Pos.	Référence	Désignation
1	10895	Geared motor 2,2 kW - T322 - R14 - 1400 rpm - 400V
2	30040	Nickel plated watertight cable gland of 11 CEM
3	80446	Cable gland reduction M 25-11
4	90639	Automatic greaser
5	30121	90° low-pressure elbow 1/4 MaleC x 1/4 FemaleD
6	10899	1/8" MaleD x 1/4" FemaleD low-pressure nipple
7	11999	8 x 7 x 40 parallel key with round end
8	70107	Spi seal 50 x 80 x 8 for 24P,24PT, MPE300, COMPACT-PRO 30
9	11334	Motor spacer flange for COMPACT-PRO
10	11337	COMPACT-PRO 30 4-lobes seal for motor spacer flange
11	11300	COMPACT-PRO 30 tank base gasket
12	11335	12
13	11360	Socket head screw M 8 x 16

Pos.	Référence	Désignation
14	11336	Drive shaft for CP 20, 30 & 40
15	11359	CP 30 transmission shaft screw pin
16	11357	CP 30 to 50 connecting rod
17	MI7009107300	EUROPRO MAP 5/6 pump rotor CP30-type head
18	MI3F00529400	EUROPRO MAP 6 D8-1,5 adjustable pump stator
19	30446	EUROPRO MAP 6 pump rotor/stator kit
20	60010	Fastening tie rod for MAP 5/6
21	90125	EUROPRO 24 P and COMPACT-PRO 30 stator flange
22	80070	Axial manometer 1/4" conical oil 50 mm 0 to 60 bar
23	M10079	MIXPRO 14 cage cover
24	12913	Pump nose manometer membrane for JETPRO 80, 120, JETBAG 120
25	90157	M6 x 16 cylindrical head screw - CP 60
26	12765	Copper seal for JETPRO 80 pump nose