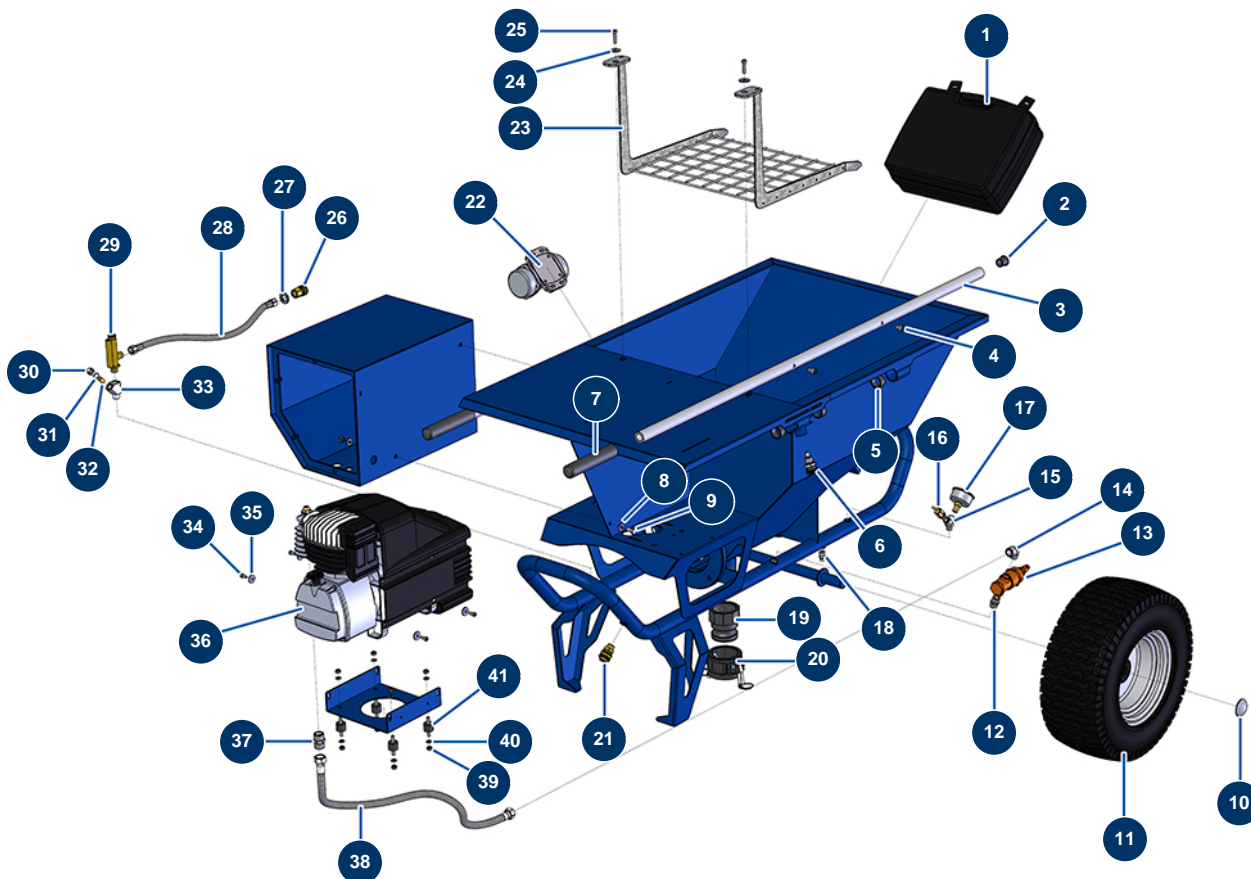


## COMPACT-PRO 40 spraying machine - Chassis



### Détails des pièces

Pos.	Référence	Désignation
1	11833	Complete ABS mortar lance - 1" coupling
2	90870	Black plastic end cap for ø 25 round tube
3	C21327	COMPACT-PRO 30 to 55 machine arm from March 2020
4	90151	8 x 10 cylindrical head screw
5	13453	Cylindrical bearing 26/30 x 16
6	15010	Complete indexing pin for arm
7	90255	Arm handle for EUROPRO 24P, E50 and E100
8	80260	ø 8 inox medium washer
9	30295	THEF 8 x 16 screw
10	90282	Ø25 chromed clip
11	80372	Complete Ø410 wheel with bearing - axle of 25
12	30367	3/8" MaleC x 3/8" MaleC low-pressure nipple
13	101015	3/8" emptying autonomous valve

Pos.	Référence	Désignation
14	30120	Elbow BP 90° 3/8 MaleC x 3/8 FemaleD
15	30123	Low pressure Y - M1/4" x F1/4" x F1/4"
16	80028	1/4 conical axial manometer - 50mm - 0 to 20 bar
17	80097	1/4" certified outer threaded safety valve 11 bar
18	30133	1/4" male compressor tank purge
19	11396	POLYPRO 2" inner threaded adapter for COMPACT-PRO 30
20	11397	POLYPRO 2" female plug with cams for COMPACT-PRO 30
21	70034	3/8" outer threaded female quick connector
22	11997	Single vibrator - 230V
23	11379	COMPACT-PRO 30, 35, 40 & 50 machine safety grid
24	80614	6 x 25 inox cylindrical head screw
25	80062	ASCA 3/8 regulator knob
26	70035	3/8" inner threaded female quick fit coupling
27	30288	ø 16 inox narrow washer
28	11340	MORTAR machine flow meter air hose
29	30005	Flowmeter for EUROPRO 4-6-8-14 and 24 P
30	M10323	Spraying machine filter body plug
31	1032095	O-ring 12,42 x 1,78
32	12502	50 meshes hopper filter
33	M10322	Filter body for spraying machine
34	90160	5 x 16 cylindrical head screw
35	30291	ø 6 large washer
36	80454	EUROPRO 27 compression head
37	30369	1/2" MaleC x 1/2" MaleC low-pressure nipple
38	11341	COMPACT-PRO 30 & 40 compressor outlet air hose
39	14217	M 6 nylstop inox nut
40	70087	ø 6 inox narrow washer
41	30147	Silentbloc ø 20 x 15 M6 for Compact-pro 30