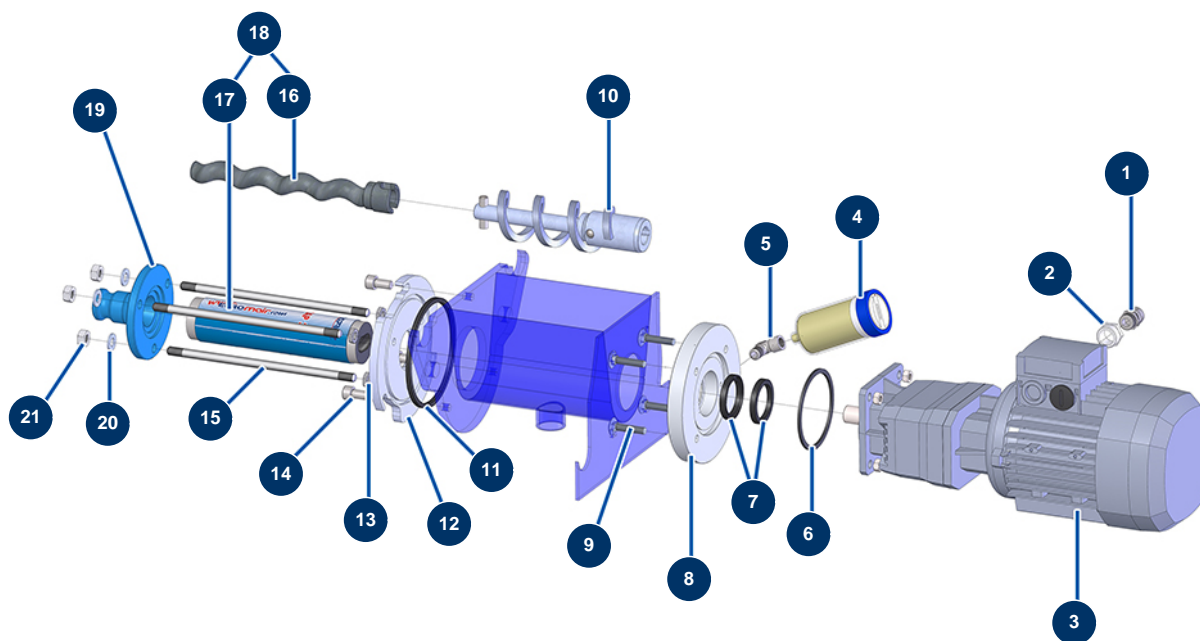


COMPACT-PRO 15 spraying machine - Transmission



Détails des pièces

Pos.	Référence	Désignation
1	30082	Nickel plated watertight cable gland of 11
2	80446	Cable gland reduction M 25-11
3	12081	Geared motor 1,5 kW - TC122 - R12,1 - 2800 rpm - 400V
4	90639	Automatic greaser
5	30121	90° low-pressure elbow 1/4 MaleC x 1/4 FemaleD
6	11456	AG, MPE machine motor flange gasket
7	70062	Spi seal 40 x 52 x 7 for 4,6,8P, AG, MPE, 7000z, 9000z
8	M10512	CP 15/2 motor flange
9	11561	Round head square neck stainless steel screw 8 x 40
10	C21719	Complete drive shaft for CP 15 V2
11	12506	4-lobes seal for JETPRO 80 flange
12	M10224	JETPRO 80 flange
13	10140	M10 flat nut

Pos.	Référence	Désignation
14	80668	10 x 20 cylindrical head screw
15	60010	Fastening tie rod for MAP 5/6
16	MI7009107800	EUROPRO MAP 3 pump rotor with bayonet head
17	MI3F00529201	EUROPRO MAP 3 - 60SH pump stator
18	30479	EUROPRO MAP 3 pump rotor/stator kit
19	10010	Blue stator flange for EUROPRO 8P and 14P
20	30293	ø 10 inox large washer
21	90453	M 10 nut