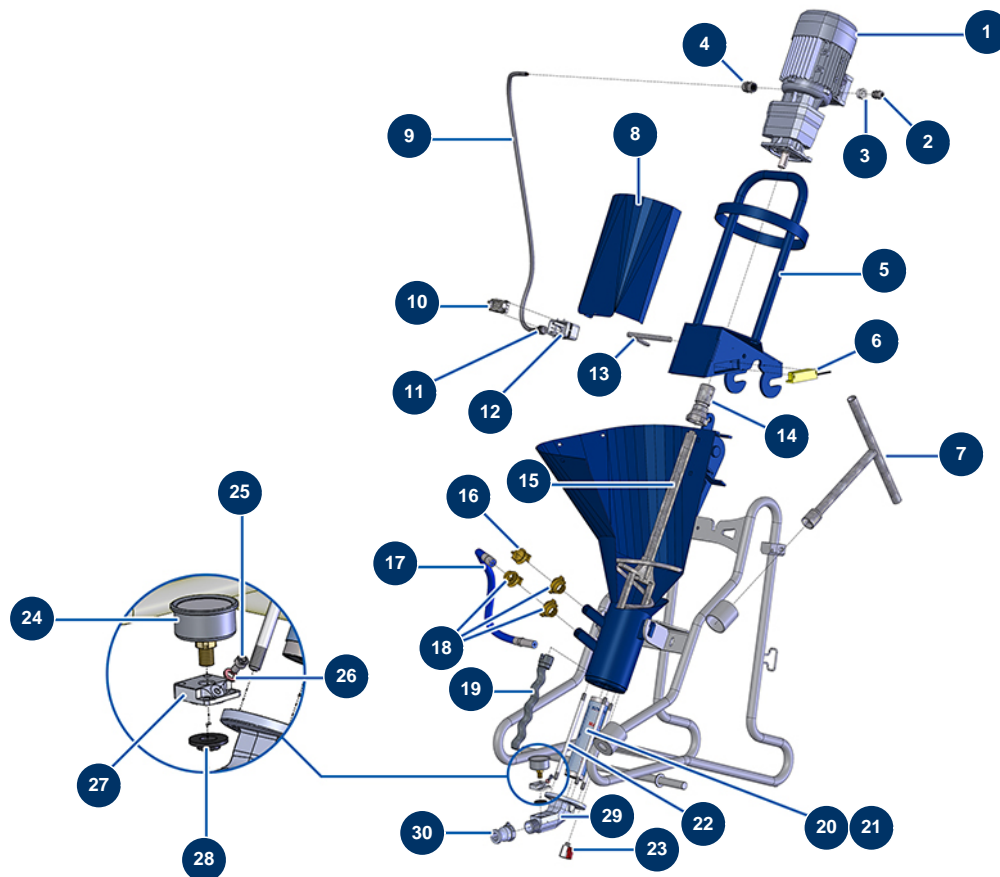


MIXPRO 14 complete floor-screed continuous mixing machine - Transmission



Détails des pièces

Pos.	Référence	Désignation
1	12081	Geared motor 1,5 kW - TC122 - R12,1 - 2800 rpm - 400V
2	30082	Nickel plated watertight cable gland of 11
3	80446	Cable gland reduction M 25-11
4	80449	Watertight cable gland of M 25
5	C20150	MIXPRO 14 motor support
6	12120	Grid safety sensor for JETMIX, MIXPRO 14, 70 & 100
7	C20243	MIXPRO 14 rotor dismounting key
8	C21403	MIXPRO 14 motor deflector
9	12131	OLFLEX CLASSIC 110 8G1.5 electrical cable by the metre
10	12093	Male insert 10 p + T
11	90600	16 nickel plated waterproof cable gland
12	13051	4 PVI hood - lateral
13	C20241	MIXPRO 14 motor support locking axis

Pos.	Référence	Désignation
14	M10152	MIXPRO 14 drive shaft
15	C20215	MIXPRO 14 drive shaft
16	12221	GEKA coupling plug
17	12736	MIXPRO 14 Version 2 mixing chamber flow meter supply hose
18	12117	3/4" inner threaded Geka coupling
19	MI7009107800	EUROPRO MAP 3 pump rotor with bayonet head
20	MI3F00529201	EUROPRO MAP 3 - 60SH pump stator
21	30479	EUROPRO MAP 3 pump rotor/stator kit
22	M10596	Fixation tie rod for MIXER 8
23	30135	1/4" mini lux valve
24	80070	Axial manometer 1/4" conical oil 50 mm 0 to 60 bar
25	90798	M6 x 10 cylindrical head screw - CP 60 cylindrical head screw
26	12765	Copper seal for JETPRO 80 pump nose
27	M10079	MIXPRO 14 cage cover
28	12126	MIXPRO 14 pump head manometer membrane
29	M10384	MIXPRO 14 pump head flange
30	70002	1" inner threaded adapter for 4 to 14P