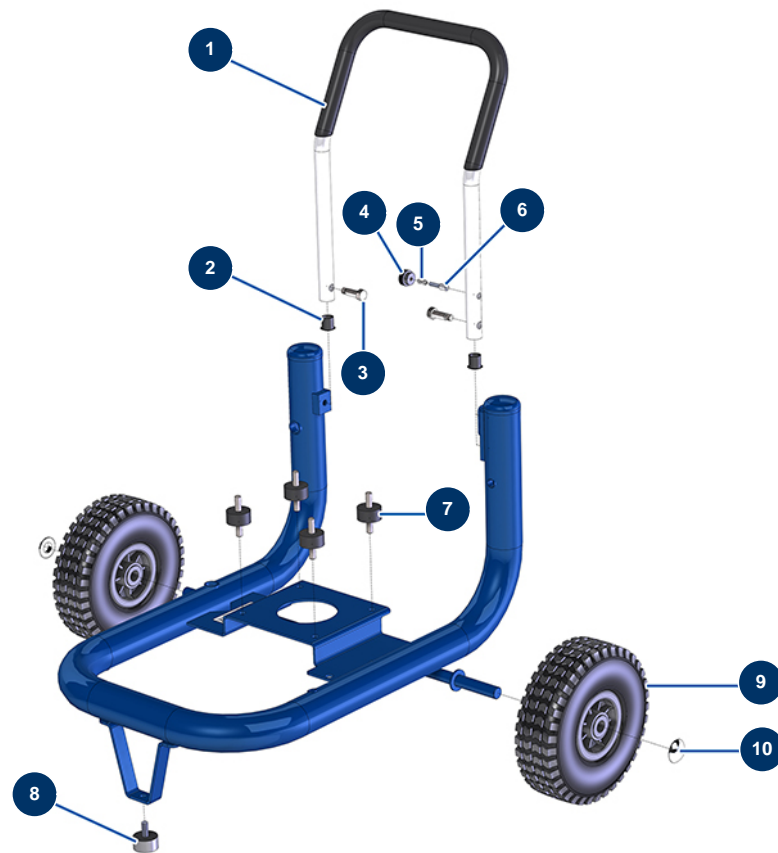


EUROPRO 40 compressor - Chassis



Détails des pièces

Pos.	Référence	Désignation
1	90804	EUROPRO 36 and 40 compressor arm
2	90870	Black plastic end cap for ø 25 round tube
3	30360	EUROPRO 30+,36 and 40 compressor arm screw
4	20001	EUROPRO 30+,36 and 40 compressor arm button
5	60040	Compressor trigger spring
6	90179	EUROPRO 30+,36 and 40 compressor arm latch
7	30150	Silentbloc ø 40 x 20 M10
8	30145	Ø 40 x 20 M10 stop
9	80001	Complete wheel 260 shaft of 20 for 6,8,14P, MPE 80 and 200, 7000z, 9000z
10	90281	Ø20 chromed clip