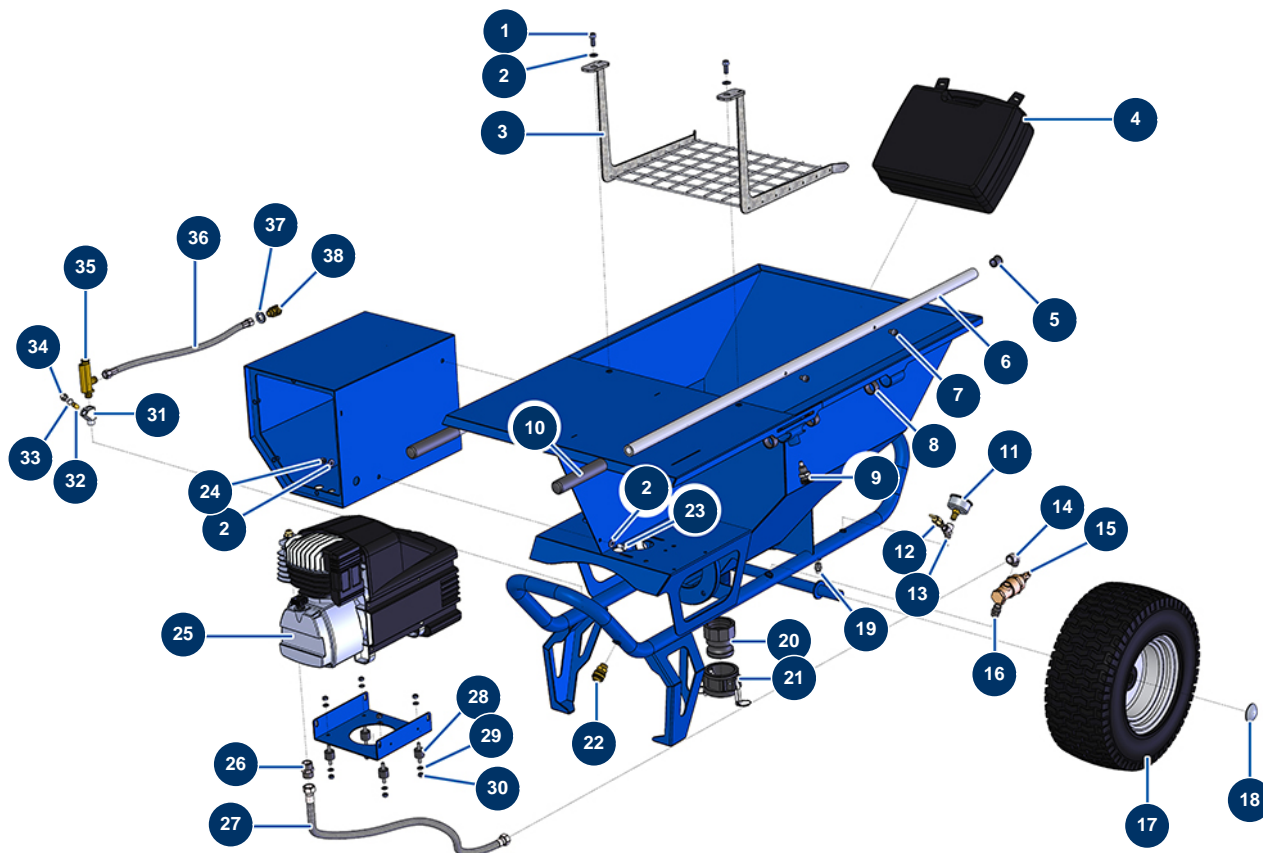


COMPACT-PRO 30 spraying machine - Chassis



Détails des pièces

Pos.	Référence	Désignation
1	80470	8 x 20 cylindrical head screw
2	80260	ø 8 inox medium washer
3	11379	COMPACT-PRO 30, 35, 40 & 50 machine safety grid
4	11833	Complete ABS mortar lance - 1" coupling
5	90870	Black plastic end cap for ø 25 round tube
6	C21327	COMPACT-PRO 30 to 55 machine arm from March 2020
7	90151	8 x 10 cylindrical head screw
8	13453	Cylindrical bearing 26/30 x 16
9	15010	Complete indexing pin for arm
10	90255	Arm handle for EUROPRO 24P, E50 and E100
11	80028	1/4 conical axial manometer - 50mm - 0 to 20 bar
12	80097	1/4" certified outer threaded safety valve 11 bar
13	30123	Low pressure Y - M1/4" x F1/4" x F1/4"

Pos.	Référence	Désignation
14	30120	Elbow BP 90° 3/8 MaleC x 3/8 FemaleD
15	101015	3/8" emptying autonomous valve
16	30367	3/8" MaleC x 3/8" MaleC low-pressure nipple
17	80372	Complete Ø410 wheel with bearing - axle of 25
18	90282	Ø25 chromed clip
19	30133	1/4" male compressor tank purge
20	11396	POLYPRO 2" inner threaded adapter for COMPACT-PRO 30
21	11397	POLYPRO 2" female plug with cams for COMPACT-PRO 30
22	70034	3/8" outer threaded female quick connector
23	30295	THEF 8 x 16 screw
24	13980	M 8 nylstop inox nut
25	80454	EUROPRO 27 compression head
26	30369	1/2" MaleC x 1/2" MaleC low-pressure nipple
27	11341	COMPACT-PRO 30 & 40 compressor outlet air hose
28	30147	Silentbloc ø 20 x 15 M6 for Compact-pro 30
29	70087	ø 6 inox narrow washer
30	14217	M 6 nylstop inox nut
31	M10322	Filter body for spraying machine
32	12502	50 meshes hopper filter
33	1032095	O-ring 12,42 x 1,78
34	M10323	Spraying machine filter body plug
35	30005	Flowmeter for EUROPRO 4-6-8-14 and 24 P
36	11340	MORTAR machine flow meter air hose
37	30288	ø 16 inox narrow washer
38	70035	3/8" inner threaded female quick fit coupling