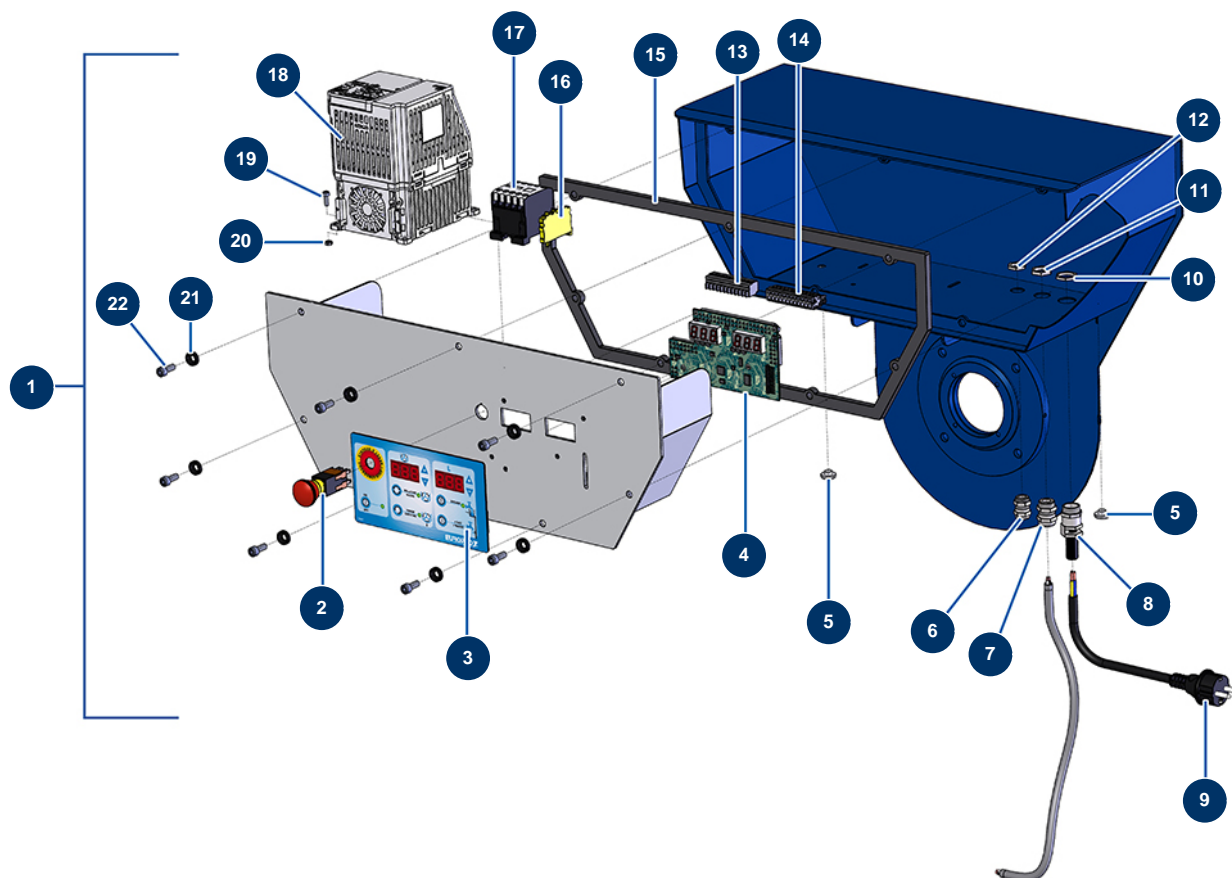


## MIXPRO 100 sequential mixer - Electrical box



### Détails des pièces

Pos.	Référence	Désignation
1	13025	Complete membrane electrical box for MIXPRO 100
2	13015	Hanging EMERGENCY STOP button Ø16
3	13007	IDEAL MIXER front with membrane
4	30673	C.P IDEAL MIXER & MIXPRO 100 electronic card
5	80397	Water exhaust cork for electrical box
6	80445	Watertight cable gland of M16
7	30040	Nickel plated watertight cable gland of 11 CEM
8	80451	Brass cable gland of 13 for power cable
9	90214	Power cable with molded plug 3G 2,5 mm <sup>2</sup>
10	30054	Cable gland locknut of 13
11	30333	Cable gland locknut of 11 CEM
12	11327	Cable gland locknut of M16
13	11771	12 pins male connector

Pos.	Référence	Désignation
14	11772	12 pins female connector
15	12138	EUROPRO MIXPRO 100 electrical box gasket
16	30038	Yellow and green conductive block 6 mm <sup>2</sup>
17	11918	Coil contactor 24 Volt AC
18	80458	Inverter 230 V - 1,5 kW
19	12444	4 x 12 cylindrical head screw
20	10038	M 6 nut
21	80573	Hollow washer Ø 6
22	90157	M6 x 16 cylindrical head screw - CP 60