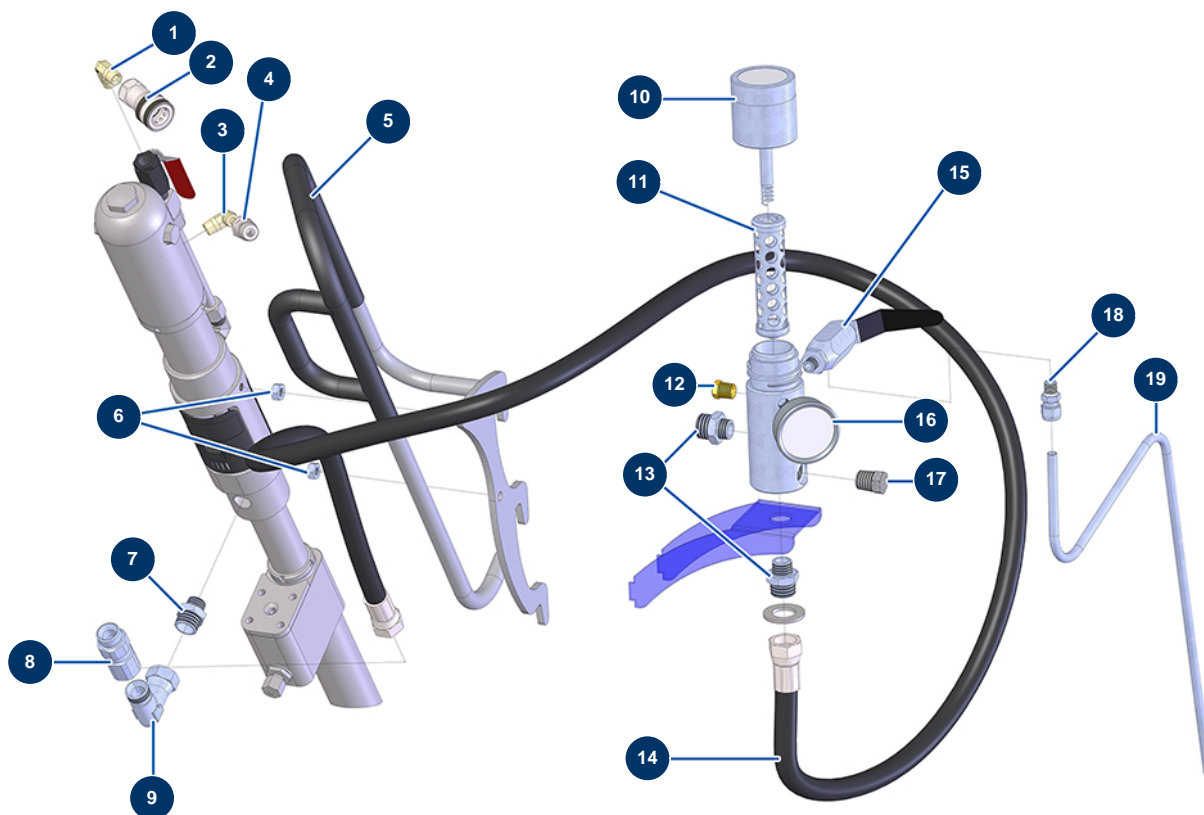


## HYDROFUT 1200 HONDA airless piston pump - Product circuit



### Détails des pièces

Pos.	Référence	Désignation
1	80615	3/8" MaleC x 3/8" MaleC high-pressure elbow
2	14188	
3	80615	3/8" MaleC x 3/8" MaleC high-pressure elbow
4	14189	
5	C21781	5
6	90453	M 10 nut
7	14234	3/4" MBSP x 1/2" MGCO Inox high-pressure nipple
8	M07051	HYDROFUT 1200 pump outlet revolving coupling
9	14235	3/4" MBSP x 3/4" FBSP Inox high-pressure elbow
10	W0290443A	HC filter cap
11	W930-004	0 meshes pump filter
12	80607	3/8" high-pressure MaleC plug
13	13827	ø 20 x 1/2 MG 315 bar union coupling

Pos.	Référence	Désignation
14	14195	14
15	W944-030A	HC discharge valve
16	W600-270	0-350 bar 1/4 NPT manometer
17	13823	1/2" high-pressure MNPT conical plug
18	13828	∅ 10 x 1/4 MNPT 315 bar union coupling
19	C21828	