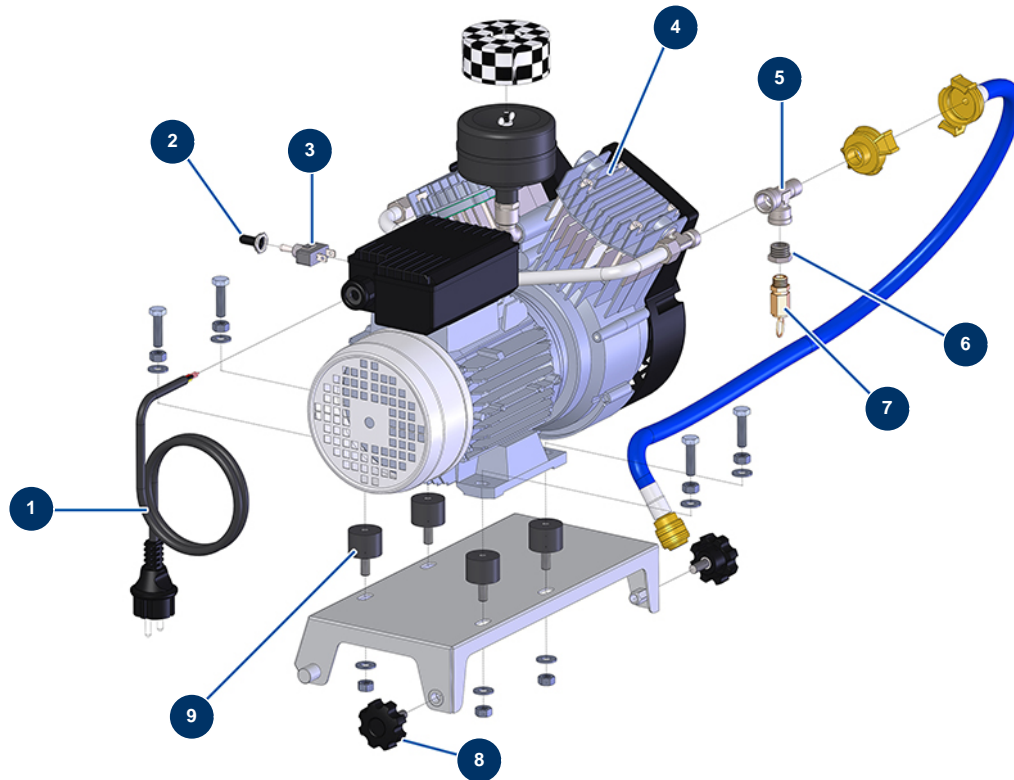


MIXPRO 14 complete plaster continuous mixing machine - Compressor group



Détails des pièces

Pos.	Référence	Désignation
1	30023	2P male electric socket + foam rubber T
2	90748	Compressor switch waterproof cap
3	90747	ON/OFF unipolar switch
4	14421	Two-cylinder compression head Oilless - 230V/50Hz single-phase
5	12530	M3/8" x F3/8" x F3/8" low pressure T
6	90242	3/8" MaleC x 1/4" FemaleD low-pressure reduction
7	1006050	Tank valve 3 bars
8	11514	Plastic thumb wheel M8 x 20
9	30151	Silentbloc ø 30 x 22 M-F8