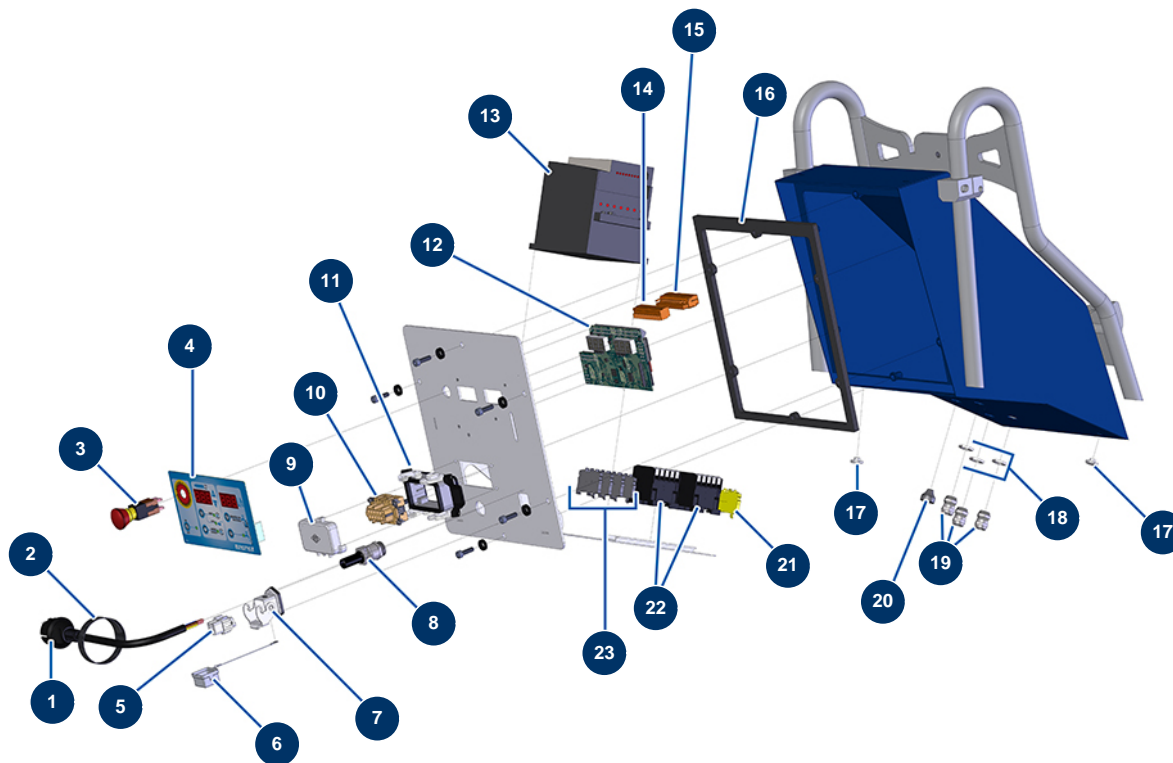


MIXPRO 14 complete plaster continuous mixing machine - Electrical box



Détails des pièces

| Pos. | Référence | Désignation |
|------|-----------|--|
| 1 | 90214 | Power cable with molded plug 3G 2,5 mm ² |
| 2 | 12410 | Self-gripping collar with loop 12,7 x 228 mm |
| 3 | 13015 | Hanging EMERGENCY STOP button Ø16 |
| 4 | 13008 | MIXPRO 14 front with membrane |
| 5 | 11914 | Female insert 4p + G |
| 6 | 12535 | 2 PIV cover with MIXPRO 14 gasket |
| 7 | 11915 | Blowing machine insulating support 3 p + T - 1 lever |
| 8 | 80450 | 2 cable gland for 11mm supply cable |
| 9 | 12096 | 4 PIV cover |
| 10 | 12092 | Female insert 10 p + T |
| 11 | 12094 | Base 10 p + T - 2 levers |
| 12 | 30671 | MIXPRO 14 electronic card |
| 13 | 80458 | Inverter 230 V - 1,5 kW |

| Pos. | Référence | Désignation |
|------|-----------|---|
| 14 | 11772 | 12 pins female connector |
| 15 | 11771 | 12 pins male connector |
| 16 | 12100 | EUROPRO MIXPRO 14 electrical box gasket |
| 17 | 80397 | Water exhaust cork for electrical box |
| 18 | 11327 | Cable gland locknut of M16 |
| 19 | 80445 | Watertight cable gland of M16 |
| 20 | 11564 | M 16 grey rubber cable gland |
| 21 | 30038 | Yellow and green conductive block 6 mm ² |
| 22 | 30011 | 230 Volt coil switch for sprayer |
| 23 | 80467 | Grey conductor block 4 mm ² |