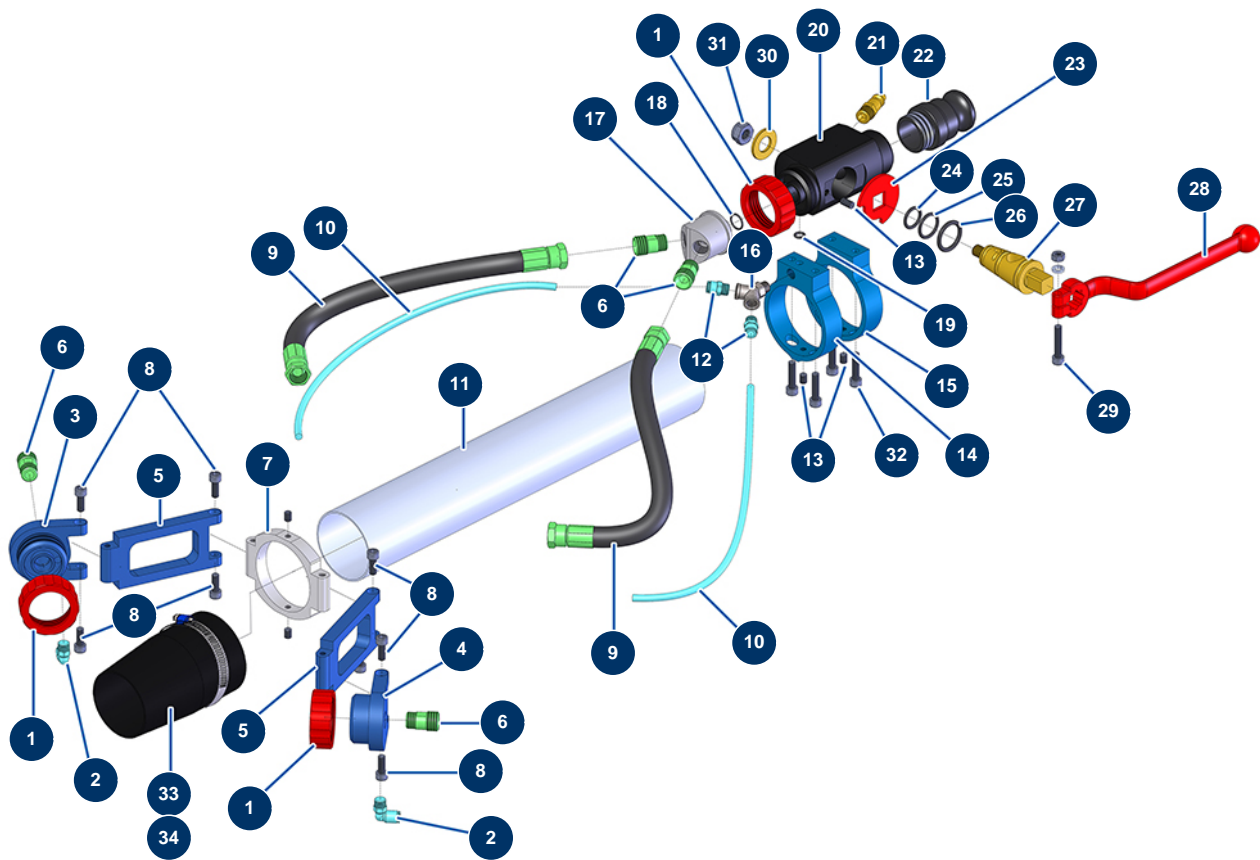


## 2 heads Ø 63 hemp and lime lance alone - General view



### Détails des pièces

Pos.	Référence	Désignation
1	10031	Aluminium lance ring red
2	30124	Corrugated Legris coupling M1/8" Ø 6
3	M10119	Hemp lance right nozzle support
4	M10118	Hemp lance left nozzle support
5	M10155	Hemp lance nozzle extension
6	M10120	Product inlet coupling for hemp lance
7	M10594	
8	90157	M6 x 16 cylindrical head screw - CP 60
9	12206	Hemp lance product hose Ø 10 x 25 cm
10	30403	Calibrated polyurethane tube ø 4 x 6 black by the metre
11	M10608	Ø 63 x 460 mm tube for hemp lance
12	91038	Legris straight coupling M1/8 Ø 6
13	30371	ABS lance countersunk screw

Pos.	Référence	Désignation
14	M10595	ABS body support for hemp lance air outlet
15	M10593	ABS body support for hemp lance
16	12137	Low pressure Y - M1/8" x F1/8" x F1/8"
17	M10122	Hemp lance distributor head 2 outlets
18	14600	12 x 1,5 O-ring
19	14616	6 x 2 O-ring
20	M10125	Hemp lance body
21	80089	Male quick fit coupling outer threaded 1/4" Ø 6
22	10280	1" x M 30/150 alu adapter for 8, 14, 24 and CP30 lance
23	10030	Stop washer
24	60026	O-ring 15,10 x 2,70
25	60027	O-ring 18,40 x 2,70
26	60028	O-ring 21,30 x 3,60
27	10029	Lance brass cone
28	20003	Red bend handle for lance (square of 14)
29	90153	6 x 30 cylindrical head screw
30	10032	Lance washer
31	13981	M 10 nylstop inox nut
32	80614	6 x 25 inox cylindrical head screw
33	M10598	Ø 63 x 50 hemp lance outlet reduction
34	11752	Worm gear clamp 50 x 70 x 9