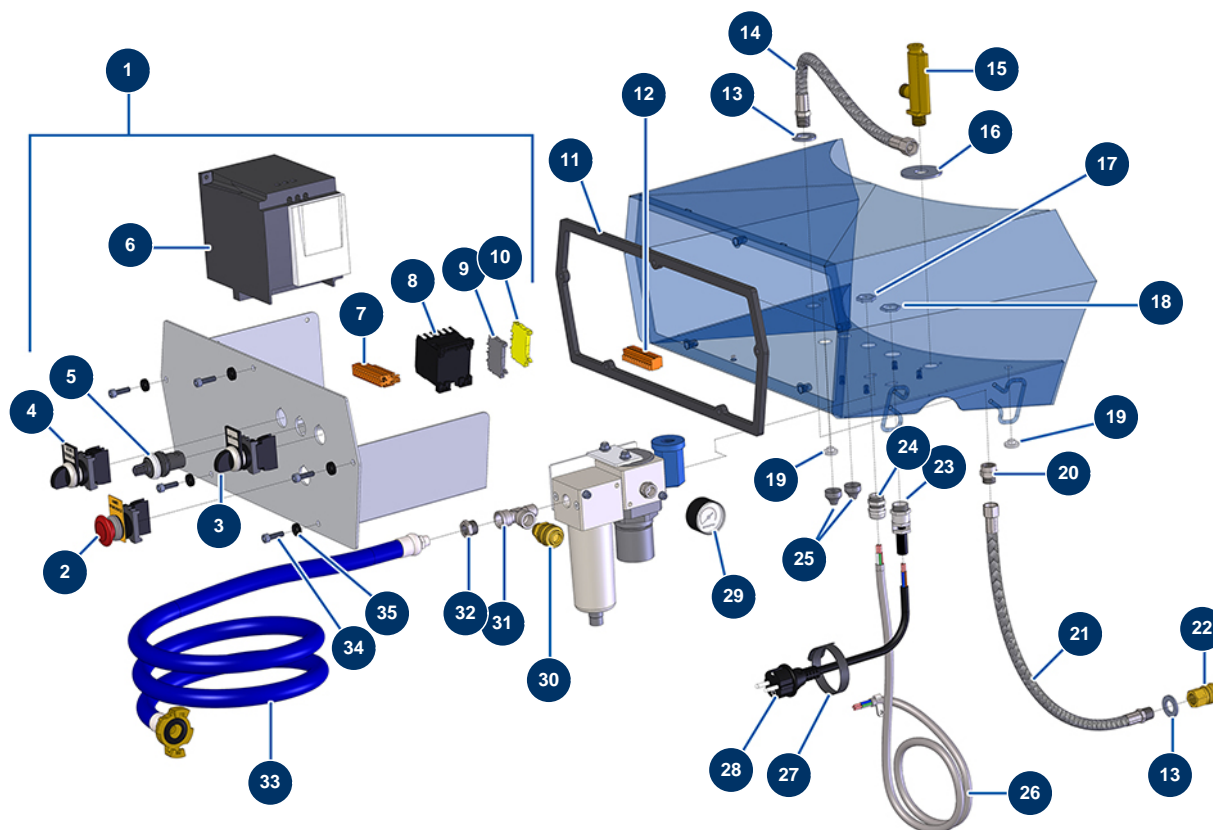


DROPPRO 30P spraying machine - Electrical box and pneumatic circuit



Détails des pièces

Pos.	Référence	Désignation
1	14582	Complete buttons electrical box for DROPPRO 30P Evo 2
2	90038	Complete EMERGENCY STOP button Ø 22
3	30014	Complete MANU-AUTO button
4	30034	Complete ON button
5	80645	Spraying machine complete potentiometer from MARCH 2003
6	80459	Inverter 230 V - 2.2 KW
7	11771	12 pins male connector
8	30011	230 Volt coil switch for sprayer
9	80467	Grey conductor block 4 mm ²
10	30038	Yellow and green conductive block 6 mm ²
11	14565	DROPPRO 30P electrical box gasket
12	11772	12 pins female connector
13	30288	ø 16 inox narrow washer

Pos.	Référence	Désignation
14	80171	Flowmeter air hose for 14P
15	30005	Flowmeter for EUROPRO 4-6-8-14 and 24 P
16	10003	∅ 16 large washer
17	30333	Cable gland locknut of 11 CEM
18	30054	Cable gland locknut of 13
19	80397	Water exhaust cork for electrical box
20	91053	3/8" MaleD x 3/8" FemaleD low-pressure nipple
21	90488	ECO 130 flow meter air hose
22	70035	3/8" inner threaded female quick fit coupling
23	80451	Brass cable gland of 13 for power cable
24	30040	Nickel plated watertight cable gland of 11 CEM
25	11564	M 16 grey rubber cable gland
26	12774	Shielded cable 4 x 2,5 by the metre
27	12411	Self-gripping collar 20 x 330 mm
28	90214	Power cable with molded plug 3G 2,5 mm ²
29	80023	Axial manometer 1/8 conical 40 mm 0 to 10 bar
30	80081	Female quick fit coupling outer threaded 3/8" Ø 6
31	12530	M3/8" x F3/8" x F3/8" low pressure T
32	90242	3/8" MaleC x 1/4" FemaleD low-pressure reduction
33	90543	6-8-14 and 24 P machine supply air hose
34	90996	6 x 20 inox cylindrical head screw
35	80573	Hollow washer Ø 6