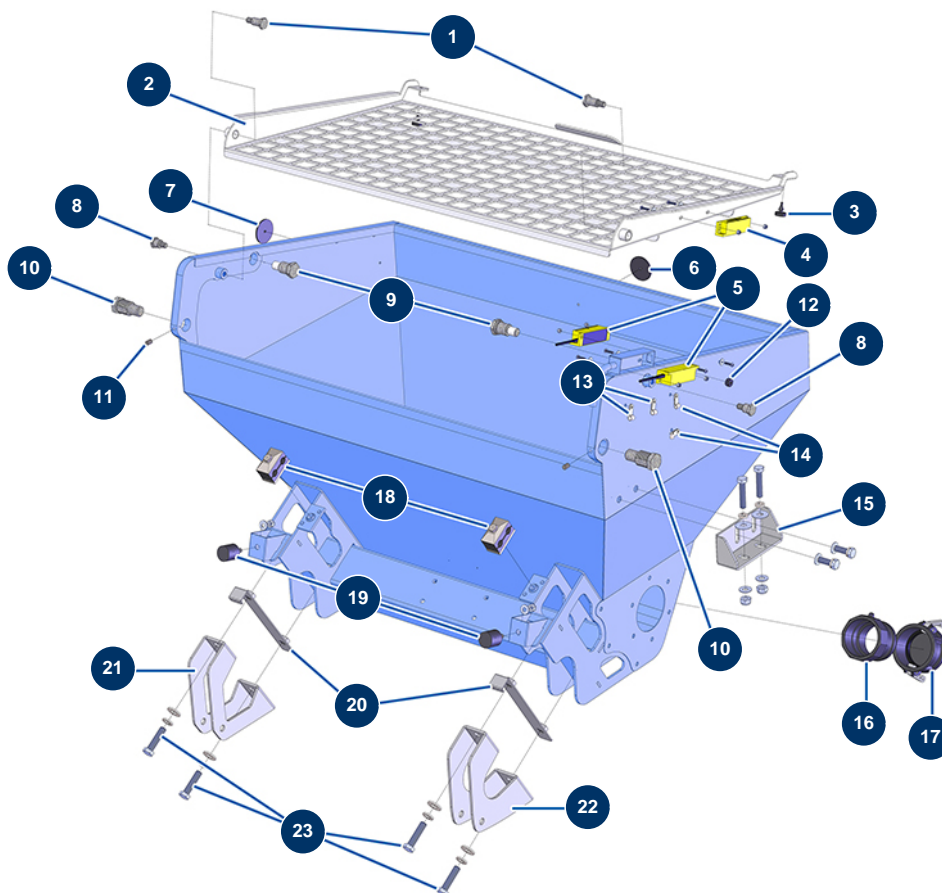


X-PRO D60 spraying machine - Mortar hopper tank



Détails des pièces

Pos.	Référence	Désignation
1	M20016	Pivot pin for CP 60 & 80 mortar hopper grid
2	C22140	Mortar hopper grid CP 60 & 80
3	12385	Mobile hood foam rubber stop - C.P 60
4	12980	Hopper and mixer safety grid sensor - C.P 60
5	12120	Grid safety sensor for JETMIX, MIXPRO 14, 70 & 100
6	12361	Round & orange reflector - C.P 60
7	12362	Round & white reflector - C.P 60
8	M20012	Anti-dust grid locking pin CP 60 & 80
9	M20013	Pivot pin for CP 60 & 80 anti-dust grid
10	M20014	Mixer pivot finger - CP 60 & 80
11	14151	8 x 12 stainless steel socket head screw with flat tip
12	13399	Ø6 rubber grommet
13	90266	Cable support Ø 7.9

Pos.	Référence	Désignation
14	90676	Cable support Ø 6.4
15	C22024	CP 60 2017 hopper support gusset
16	13172	Polypro 3" threaded adapter - C.P 60
17	13171	Polypro 3" female cam plug - C.P 60
18	12438	Double tube collar ø 22
19	90769	Ø 30 x 30 M8 stop
20	C22109	Hopper mounting strip CP 60, 80 & 120
21	C22043	CP 60, 80 & 120 hopper front clamping flange
22	C22045	CP 60, 80 & 120 hopper rear clamping flange
23	12467	THEF 12 x 50 screw