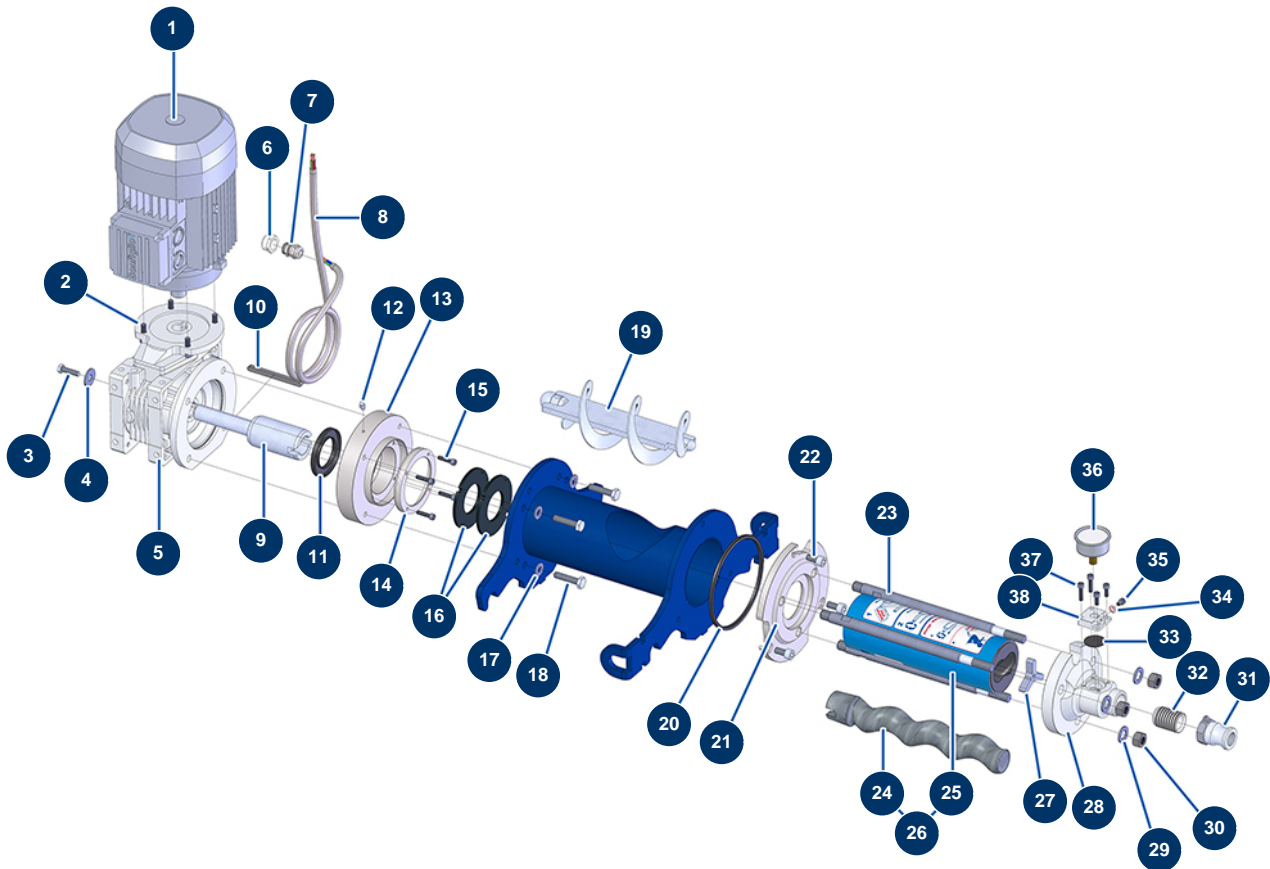


DROPPRO 30P spraying machine - Transmission



Détails des pièces

Pos.	Référence	Désignation
1	90189	Electric motor 2,2 kW - T90 - B14 - 1400 rpm - 400V
2	90157	M6 x 16 cylindrical head screw - CP 60
3	30258	THEF 10 x 30 screw
4	30293	ø 10 inox large washer
5	90504	Speed reducer 90° - T63 - R15 - B14/T90
6	80446	Cable gland reduction M 25-11
7	30040	Nickel plated watertight cable gland of 11 CEM
8	12774	Shielded cable 4 x 2,5 by the metre
9	M10221	Drive shaft for JETPRO 80
10	90750	8 x 7 x 100 parallel key with round end for 24P et PT
11	70107	Spi seal 50 x 80 x 8 for 24P,24PT, MPE300, COMPACT-PRO 30
12	60012	M6 straight lubricator
13	M10468	BONFI motor spacer flange for JETPRO, JETMIX 80 & 100

Pos.	Référence	Désignation
14	M10222	Flange seal for JETPRO 80 & 120
15	90157	M6 x 16 cylindrical head screw - CP 60
16	12507	Bottom of tank seal for JETPRO 80
17	80259	Ø 6 medium washer
18	12441	THEF 10 x 45 screw
19	C20561	JETPRO 80 connecting rod
20	12815	4-lobes seal for JETPRO / JETBAG 120 flange
21	M10670	DROPPRO 30P ø 90 stator flange
22	80668	10 x 20 cylindrical head screw
23	M10428	Fastening tie rod for SILOTECH
24	MI3F00529700	EUROPRO MAP 5 pump stator
25	MI7009107300	EUROPRO MAP 5/6 pump rotor CP30-type head
26	30445	EUROPRO MAP 5 pump rotor/stator kit
27	M10771	Ø62 pump head crosspiece
28	M10427	1" inner threaded stator flange
29	30286	ø 14 inox narrow washer
30	10036	M 14 nut
31	70002	1" inner threaded adapter for 4 to 14P
32	M10426	1" BSP outer threaded insert
33	12913	Pump nose manometer membrane for JETPRO 80, 120, JETBAG 120
34	12765	Copper seal for JETPRO 80 pump nose
35	12625	6 x 8 cylindrical head screw
36	12623	50 mm axial manometer 1/4" conical - 0 to 160 bar
37	80614	6 x 25 inox cylindrical head screw
38	M10079	MIXPRO 14 cage cover