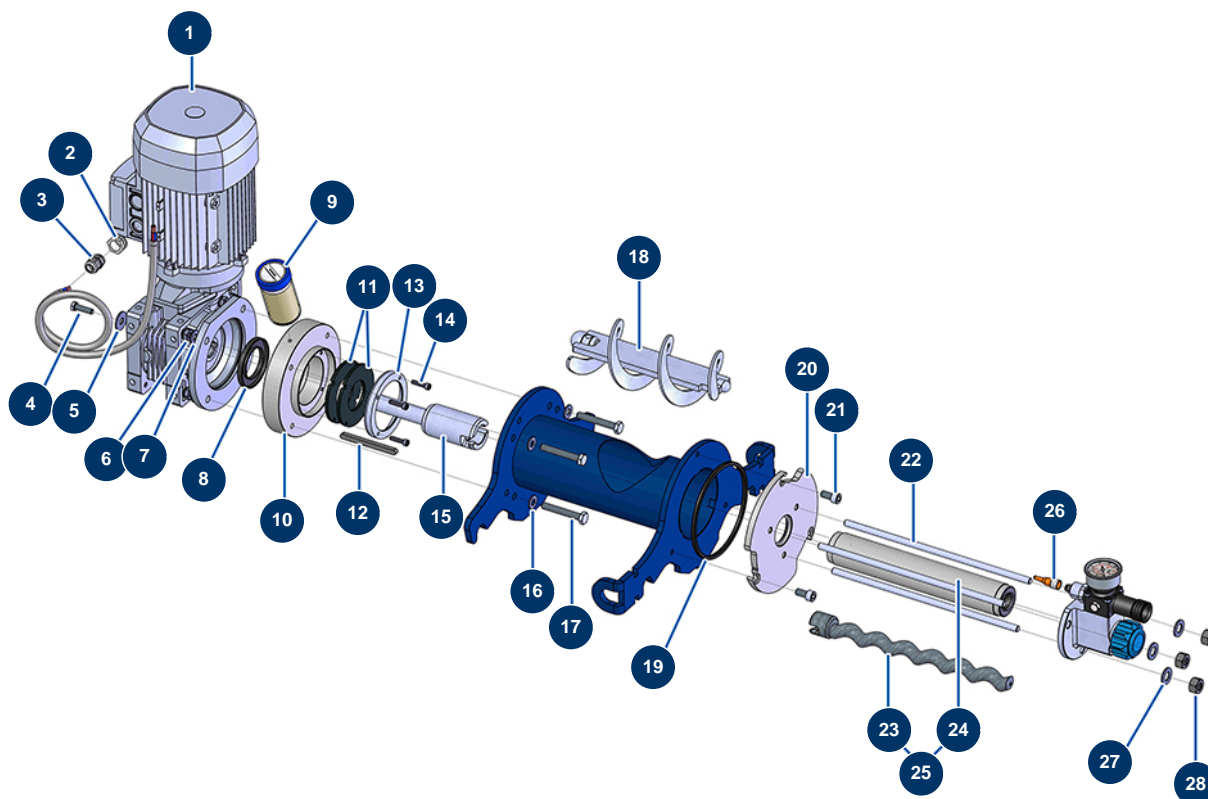


## JETPRO 100-7 complete atomizer - Transmission



### Détails des pièces

Pos.	Référence	Désignation
1	90189	Electric motor 2,2 kW - T90 - B14 - 1400 rpm - 400V
2	80446	Cable gland reduction M 25-11
3	30040	Nickel plated watertight cable gland of 11 CEM
4	11544	THEF 8 x 25 screw
5	30293	ø 10 inox large washer
6	13981	M 10 nylstop inox nut
7	80261	ø 10 inox medium washer
8	70107	Spi seal 50 x 80 x 8 for 24P,24PT, MPE300, COMPACT-PRO 30
9	90639	Automatic greaser
10	M10468	BONFI motor spacer flange for JETPRO, JETMIX 80 & 100
11	12507	Bottom of tank seal for JETPRO 80
12	90750	8 x 7 x 100 parallel key with round end for 24P et PT
13	M10222	Flange seal for JETPRO 80 & 120

Pos.	Référence	Désignation
14	80614	6 x 25 inox cylindrical head screw
15	M10221	Drive shaft for JETPRO 80
16	80259	Ø 6 medium washer
17	12163	THEF 10 x 70 inox screw
18	C20561	JETPRO 80 connecting rod
19	12815	4-lobes seal for JETPRO / JETBAG 120 flange
20	M10546	JETPRO 120 support flange - JET 1-2 pump
21	80668	10 x 20 cylindrical head screw
22	M10226	Fastening tie rod for JETPRO 80
23	MI7009107700	EUROPRO JET 2 chromed pump rotor with bayonet head
24	MI3F00529100	EUROPRO JET 2-80SH pump stator
25	30791	EUROPRO JET 2 pump rotor/stator kit
26	12409	M12 straight female connector with 2m cable
27	30286	ø 14 inox narrow washer
28	10036	M 14 nut