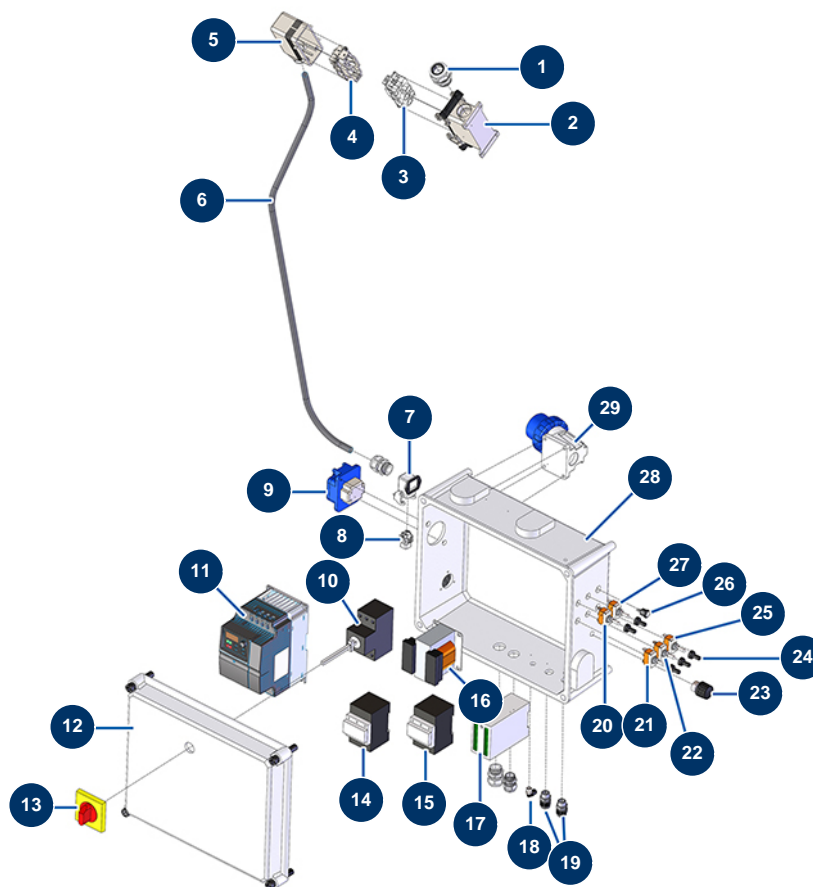


MIXPRO 28 - 2,2 kW complete plaster continuous mixing machine - Electrical box (up to 12/2020)



Détails des pièces

| Pos. | Référence    | Désignation                                               |
|------|--------------|-----------------------------------------------------------|
| 1    | MI3C04200208 | PG21 cable gland                                          |
| 2    | MI3C02800400 | Fixed Base                                                |
| 3    | MI3C03100400 | Male motor safety socket                                  |
| 4    | MI3C02700600 | Female motor safety socket                                |
| 5    | MI3C02800100 | Mobile Base                                               |
| 6    | MI3C03900008 | 7 x 2,5 motor power cable by the metre                    |
| 7    | 12543        | Insulating bend socket base 3p + G - 1 lever              |
| 8    | 11914        | Female insert 4p + G                                      |
| 9    | MI3C02601001 | MIXPRO 28 straight socket F 2P + T 16A                    |
| 10   | MI3C01030108 | Main switch                                               |
| 11   | MI3C05100107 | MOSQUITO/SPRINTER, PLUS MONO & MIXPRO 28 inverter - 2,2KW |
| 12   | MI3C00110163 | MIXPRO 28 plastic box door                                |
| 13   | MI3C01300207 | ABB main start stop button                                |

| Pos. | Référence    | Désignation                                      |
|------|--------------|--------------------------------------------------|
| 14   | MI3C00700117 | 4 KW 24V AC coil contactor                       |
| 15   | MI3C00700110 | 3RT10251A 7,5KW 24V AC coil contactor            |
| 16   | MI3C00500101 | 220 V transformer                                |
| 17   | MI3C03202500 | MOSQUITO, SPRINTER black box                     |
| 18   | 30124        | Corrugated Legris coupling M1/8" Ø 6             |
| 19   | MI3C04200201 | PG 09 watertight cable gland                     |
| 20   | MI3C01800402 | T315N-A ON-ON switch                             |
| 21   | MI3C01800500 | 1-0 T115 A-A switch                              |
| 22   | MI3C01800100 | 1-0-1 T115 E-A switch                            |
| 23   | MI3C00300101 | MIXPRO28/SPRINTER/MOSQUITO machine potentiometer |
| 24   | MI3C02100100 | Cover for switch                                 |
| 25   | MI3C01800200 | Main Switch                                      |
| 26   | MI8055000100 | Neon bulb                                        |
| 27   | MI3C01801000 | 1-0 T115 F-A switch                              |
| 28   | MI3C00110464 | Plastic case without door for MIXPRO 28          |
| 29   | MI3C03000103 | Elbow socket for male base 220V                  |