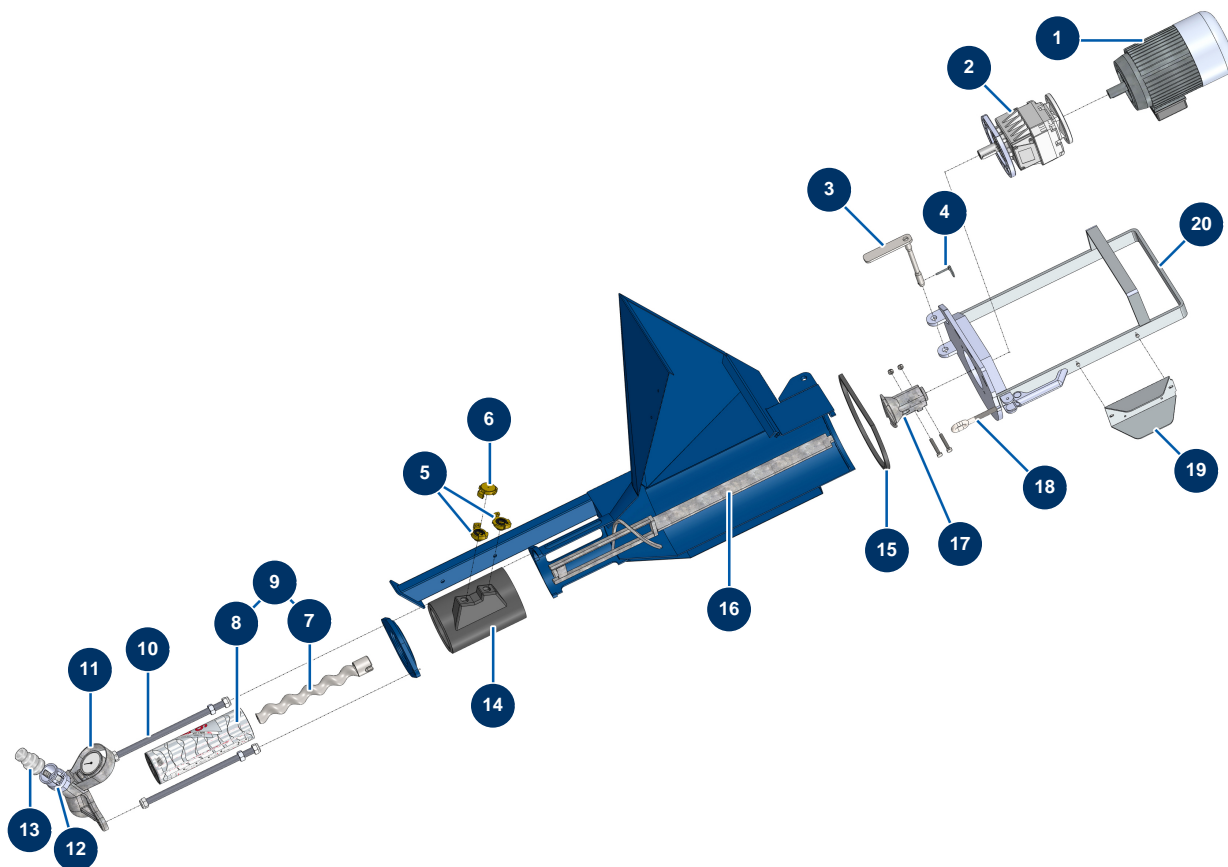


## MIXPRO 28 - 2,2 kW complete plaster continuous mixing machine - Mixing group



### Détails des pièces

Pos.	Référence	Désignation
1	MI3D00200710	Electric motor 2,2 kW - T90 - B14 -2800 rpm - 400V
2	MI3D00310101	Coaxial speed reducer - T412A - R8,96 - B14/T90
3	MI7018006000	Engine locking axis
4	MI3T01200101	Clip pin
5	13574	1" GEKA outer threaded coupling
6	MI3A00100401	Geka coupling plug
7	MI7009012000	MIXER 26 D4-2 pump rotor with slit head
8	MI3F00501300	MIXER 26 D4-2 pump stator
9	30861	MIXER 26 pump rotor/stator kit - 16 L/min
10	MI8023003000	M16 tie rod L = 350 mm + screws
11	MI8012006000	LIGHT/MOSQUITO/SPRINTER/MIXPRO28 complete pump head
12	11951	1"1/4 camlock steel coupling, inner threaded 1"1/4
13	MI3A00300401	Double steel adapter ø 25 ø 35

Pos.	Référence	Désignation
14	MI7021004000	MIXPRO 28 mixing chamber
15	MI3G01000301	O-ring
16	MI7003020000	MIXPRO 28 & SPRINTER/MOSQUITO mixing shaft
17	MI700600650S	MOSQUITO/PLUS MONO/LIGHT/MIPRO28/MIXPRO30 motor coupling
18	MI3T01000400	Motor Closing Ring
19	MI4906511000	Mixpro 28 motor plug protection
20	MI701100300G	Mixing chamber motor support for MIXER PLUS and SPRINTER