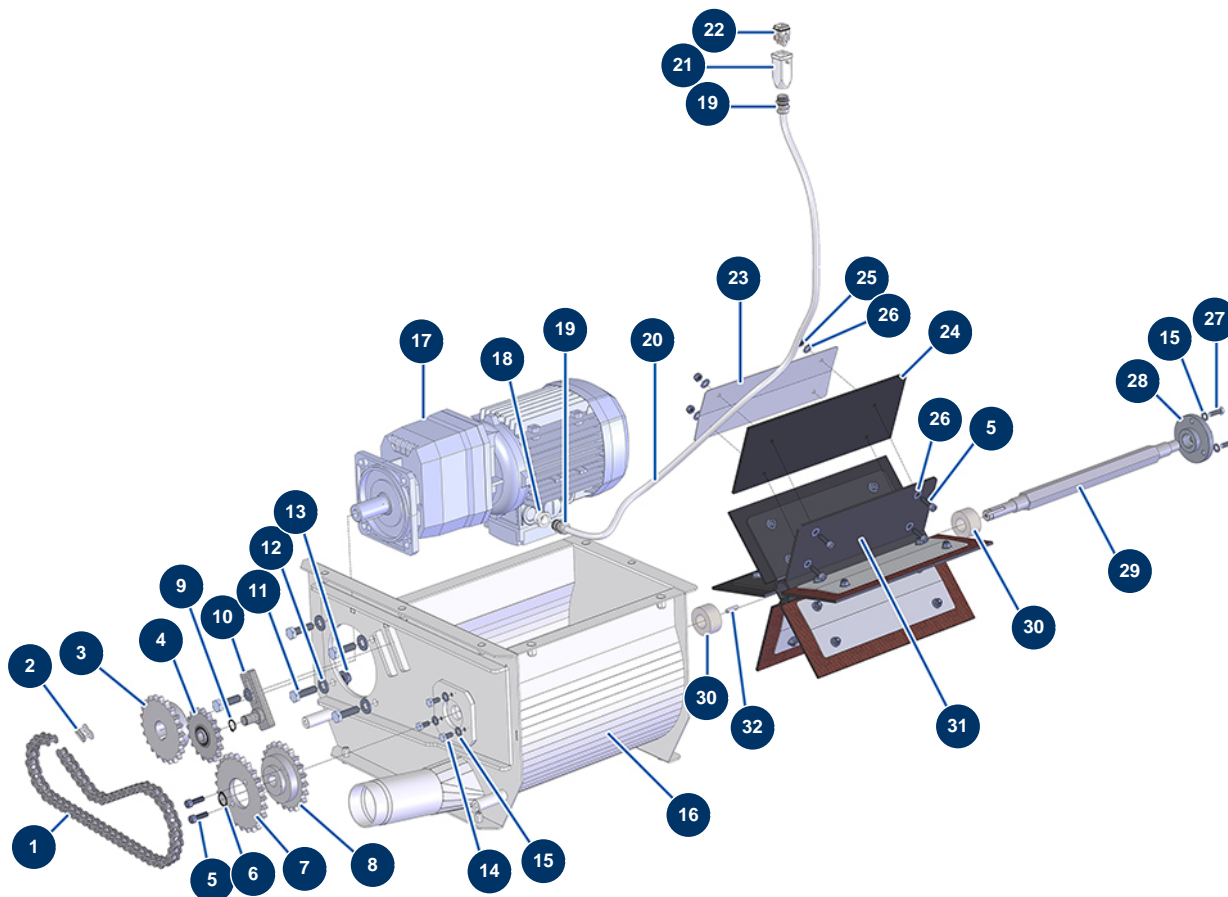


TURBISOL 200 blowing machine - Transmission (up to 09/2021)



Détails des pièces

| Pos. | Référence | Désignation |
|------|-----------|--|
| 1 | 14722 | |
| 2 | 14723 | |
| 3 | 14724 | 22 teeth single sprocket pitch 15,875 for TURBISOL 200 blowing machine |
| 4 | 14727 | 17 teeth single sprocket pitch 15,875 for TURBISOL 200 blowing machine |
| 5 | 12783 | 8 x 25 cylindrical head screw |
| 6 | 12318 | Ø 20 outer circlip |
| 7 | 14728 | |
| 8 | 14725 | 21 teeth single sprocket pitch 15,875 for TURBISOL 200 blowing machine |
| 9 | 11991 | Ø 16 outer circlip |
| 10 | C22894 | |
| 11 | 12928 | THEF 12 x 40 screw |
| 12 | 14102 | ø 12 inox medium washer |
| 13 | 13981 | M 10 nylstop inox nut |

| Pos. | Référence | Désignation |
|------|-----------|--|
| 14 | 30295 | THEF 8 x 16 screw |
| 15 | 30256 | ∅ 8 inox narrow washer |
| 16 | C22922 | 16 |
| 17 | 12059 | Geared motor 1,5 kW - TC322 - R18,1 - 1400 rpm - 400V |
| 18 | 80446 | Cable gland reduction M 25-11 |
| 19 | 30082 | Nickel plated watertight cable gland of 11 |
| 20 | 11964 | H05VVF 4G1 grey electrical cable by the metre |
| 21 | 11916 | Blowing machine insulating cover 3 p + T |
| 22 | 11913 | Blowing machine male insert 4 p + T |
| 23 | C22957 | |
| 24 | 14732 | TURBISOL 200 distributor rubber paddle |
| 25 | 13980 | M 8 nylstop inox nut |
| 26 | 80260 | ∅ 8 inox medium washer |
| 27 | 11544 | THEF 8 x 25 screw |
| 28 | M10709 | |
| 29 | M10728 | TURBISOL 200 distributor shaft |
| 30 | 14760 | Felt gasket Ø 20 x 40 for TURBISOL 200 blowing machine |
| 31 | C22956 | TURBISOL 200 hexagonal rotating distributor |
| 32 | 12000 | 6 x 6 x 29 parallel key with round end |