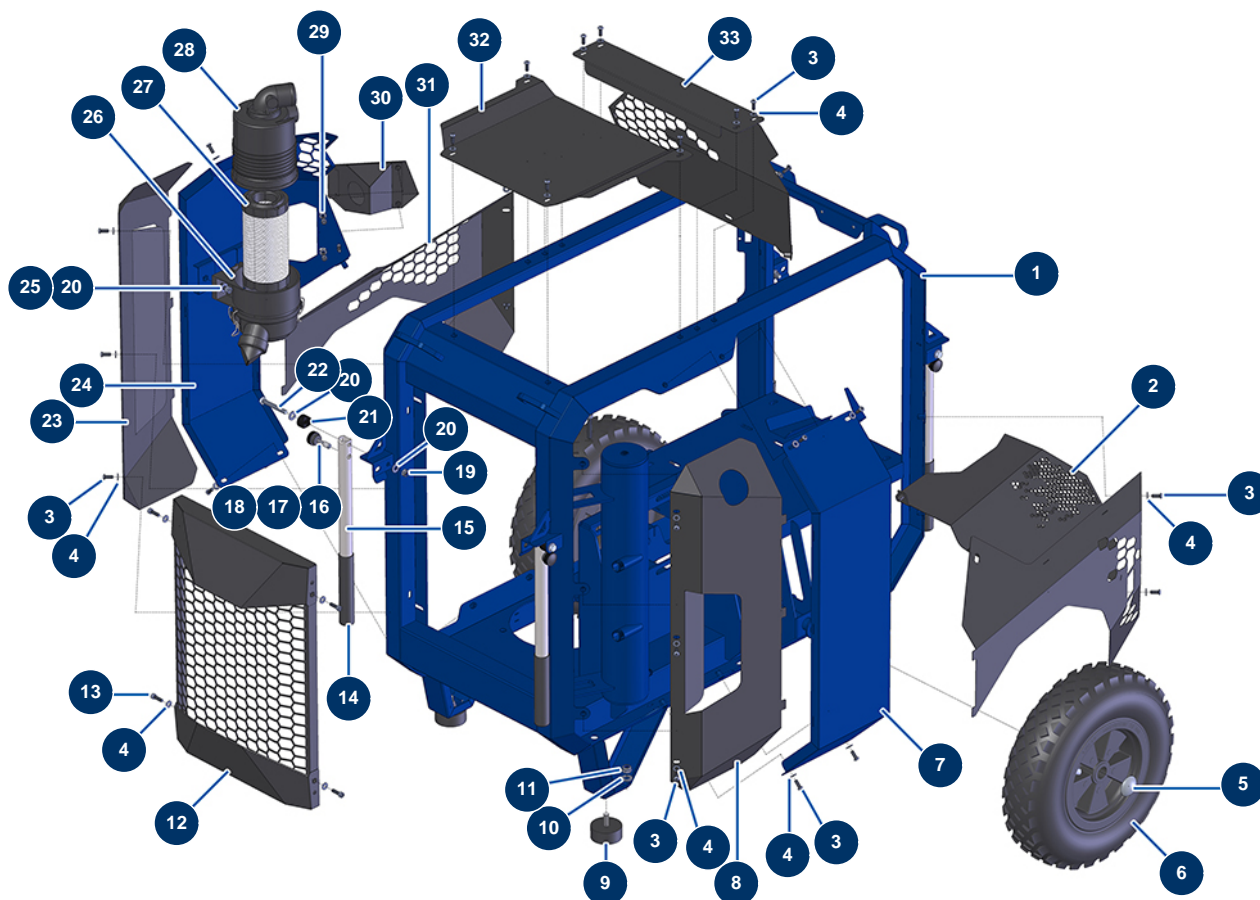


EUROPRO 150 TH Honda compressor - Chassis



Détails des pièces

Pos.	Référence	Désignation
1	C22862	1
2	C22822	2
3	11145	6 x 16 inox cylindrical pan head screw
4	80259	Ø 6 medium washer
5	90282	Ø25 chromed clip
6	80003	Ø400 complete wheel with shaft of 25 for 100TH, MPE 300
7	C22830	7
8	C22815	8
9	90196	Ø 60 x 25 M10 stop
10	80261	ø 10 inox medium washer
11	13981	M 10 nylstop inox nut
12	C22838	12
13	90996	6 x 20 inox cylindrical head screw

Pos.	Référence	Désignation
14	90255	Arm handle for EUROPRO 24P, E50 and E100
15	11449	EUROPRO 50 et 100 compressor arm
16	90179	EUROPRO 30+,36 and 40 compressor arm latch
17	60040	Compressor trigger spring
18	20001	EUROPRO 30+,36 and 40 compressor arm button
19	13980	M 8 nylstop inox nut
20	80260	ø 8 inox medium washer
21	11466	Plastic arm spacer
22	12450	THEF 8 x 60 screw
23	C22811	23
24	C22835	24
25	80470	8 x 20 cylindrical head screw
26	14669	Donaldson complete cyclonic air filter fixing bridge for E150 TH compressor
27	14670	Donaldson air filter cartridge for E150 TH compressor
28	14668	Donaldson complete cyclonic air filter for E150 TH compressor
29	90157	M6 x 16 cylindrical head screw - CP 60
30	C22929	30
31	C22807	31
32	C22809	32
33	C22796	33